

P1157E-871

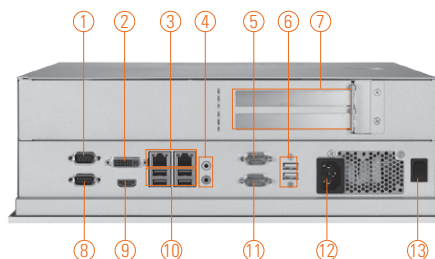
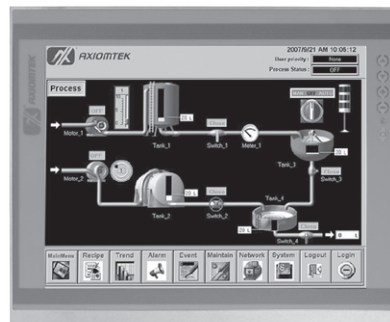
15" XGA TFT Expandable Industrial Touch Panel Computer with 3rd Gen Intel® Core™ i7/i5/i3, Celeron® & Pentium® Processor, 2 PCIe or 2 PCI Slots

Features

- 15" XGA TFT LCD display
- LGA1155 socket 3rd gen Intel® Core™ i7/i5/i3, Celeron® & Pentium® processor
- Intel® C216 chipset
- Less screw design for easy installation
- 4 USB 3.0, 2 USB 2.0 and 4 COM ports
- Two PCIe or two PCI expansion slots
- Built-in speakers and optional Wi-Fi 802.11 b/g/n module
- Robust aluminum with IP65 compliant front bezel design



▲ Side view



- | | | |
|---|---------------------------------|--------------------|
| 1. COM 1 with 5V & 12V (RS-232/422/485) | 5. COM 3 with 5V & 12V (RS-232) | 10. USB 3.0 x 4 |
| 2. DVI-I | 6. USB 2.0 x 2 | 11. COM 4 (RS-232) |
| 3. Ethernet x 2 | 7. PCIe x8 x 2 or PCI x 2 | 12. AC plug |
| 4. Audio (Mic-in/Line-out) | 8. COM 2 (RS-232) | 13. Power switch |
| | 9. HDMI | |



Introduction

The P1157E-871 is a multimedia 15" touch panel PC for kiosk application. It has a fashionable mechanism design and industrial-grade material front bezel which can avoid damage from chemical corrosion. To meet the demands of multimedia application, the P1157E-871 is powered by a high performance LGA1155 socket 3rd generation Intel® Core™ i7/i5/i3, Pentium® & Celeron® processors with the Intel® C216 Express chipset. It features four COM ports, two Gigabit Ethernet and up to 16 GB memory of dual-channel DDR3 that delivers high computing capability for high performance-demanding applications. The industrial panel PC is most suitable for kiosk, factory and automation.

Dual Monitor Display

If larger viewing area is desired, an additional display can be connected via the system's VGA or HDMI port to help enhance worker's productivity level.

Expandable for 2 PCIe or 2 PCI

The P1157E-871 has 2 PCIe x8 or 2 PCI slots for expansion purpose. User can easily plug in standard half-size PCI or PCIe card based on any application needs.

Speaker and WLAN Antenna Supported

The P1157E-871 features built-in speakers for kiosk application to display multimedia content program. It also supports WLAN module antenna (optional) for wireless network connectivity.

Friendly Less Screw Design

The P1157E-871 is designed with ease of maintenance in mind. There are only three screws on the back chassis, so that technicians can quickly remove the system's back cover with minimum effort.

Specifications

Front Bezel	Aluminum w/ IP65/NEMA 4 rugged protection	
LCD Panel	Display Type	15" XGA TFT LCD
	Brightness	350 nits
	Resolution	1024 x 768 pixels
	Viewing Angle	160°/140°
Main System	CPU	LGA1155 socket 3rd generation Intel® Core™ i7/i5/i3, Celeron® & Pentium® processor
	Chipset	Intel® C216
	System Memory	2 x 204-pin DDR3-1333/1600 SO-DIMM, up to 16GB
	BIOS	AMI UEFI BIOS with OA 3.0 built
	Storage	1 x 3.5" or 2 x 2.5" SATA HDD
	Drive	1 x builtin slim DVD-RW (optional)
	Watchdog Timer	255 levels, 1~255 sec.

Specifications

IO Connector	2 x RS-232 (COM 2/4) 1 x RS-232/422/485 with 5V & 12V (COM 1) 1 x RS-232 with 5V & 12V (COM 3) 1 x DVI-I 1 x HDMI 4 x USB 3.0 2 x USB 2.0 2 x 10/100/1000 Mbps Ethernet (Intel® 82579LM/82583V) 1 x Audio (Mic-in/Line-out)
Expansion Interface	2 x PCIe x8 or 2 x PCI
Touchscreen	5-wire resistive type Light transmission 79% 1 million activations (typical) at a single point
Power Supply	100 ~ 240 VAC, 270 W
Power Consumption	167 W
Dimensions	378 mm (14.88") (W) x 125.5 mm (4.94") (D) x 309 mm (12.17") (H)
Packing Dimension	610 mm (24.02") (W) x 260 mm (10.24") (D) x 590 mm (23.23") (H)
Weight(net/gross)	6.2 kg (13.67 lb)/ 9.6 kg (21.16 lb)
Environment	Operating temperature: 0°C ~ +45°C (+32°F ~ +113°F) Relative humidity: 10% ~ 90% @ 40°C, non-considering Operating vibration: 1.0G, 5-500Hz, random
Certificate	CE

Ordering Information

P1157E-871 w/ PCIe	15" XGA expandable industrial touch panel computer with LGA1155 socket 3rd generation Intel® Core™ i7/i5/i3, Xeon®, Pentium® & Celeron® processor, resistive touch screen, 2 PCIe x8 slots and 100-240 VAC
P1157E-871 w/ PCI	15" XGA expandable industrial touch panel computer with LGA1155 socket 3rd generation Intel® Core™ i7/i5/i3, Xeon®, Pentium® & Celeron® processor, resistive touch screen, 2 PCI slots and 100-240 VAC

* Specification and certifications are based on options and may vary.

Optional Accessories

82211271000E	Wireless LAN kit
8211570100E	VESA & wall mount kit
8211570060E	Rack mount kit
72211571000E	2 x 2.5" HDD bracket
82211570070E	P1157E-871 DVD-RW kit
E981604011	ATC10 (VESA arm clamp type)
E981604012	ATW10 (VESA arm wall mount)

Optional OS Installation

Windows® XP/XPe

Windows® 7/8.1

Windows® Embedded 7/8



▲ Expandible design



▲ Less screw design

Dimensions

