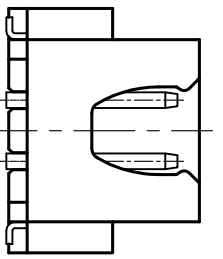
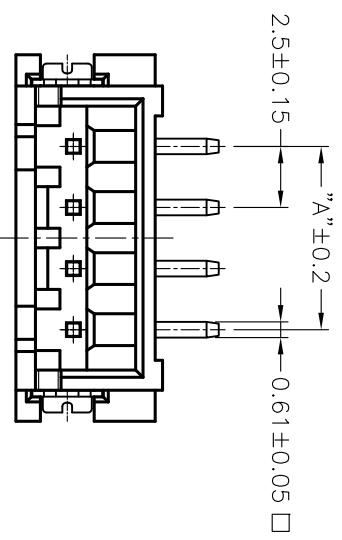
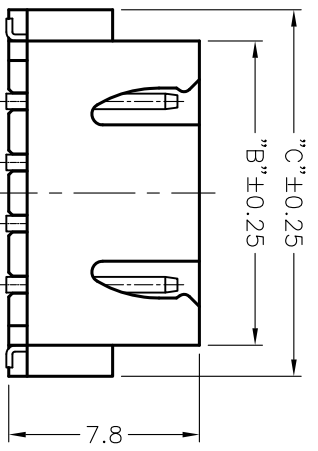


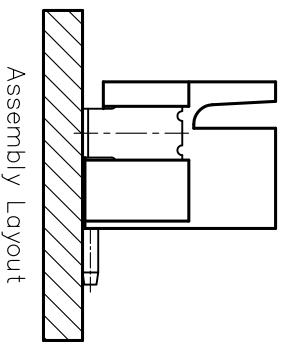
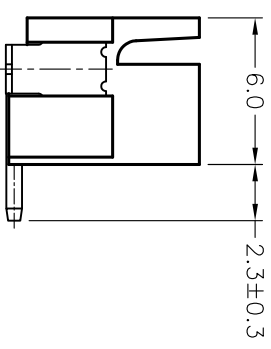
Poles	DIM.A	DIM.B	DIM.C
2P	2.5	7.45	10.0
3P	5.0	9.95	12.5
4P	7.5	12.45	15.0
5P	10.0	14.95	17.5
6P	12.5	17.45	20.0
7P	15.0	19.95	22.5
8P	17.5	22.45	25.0
9P	20.0	24.95	27.5
10P	22.5	27.45	30.0
11P	25.0	29.95	32.5
12P	27.5	32.45	35.0
13P	30.0	34.95	37.5
14P	32.5	37.45	40.0
15P	35.0	39.95	42.5
16P	37.5	42.45	45.0



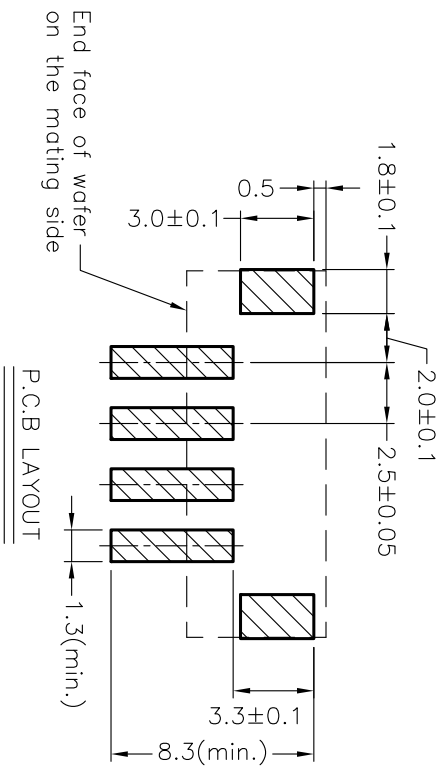
2P样式



3P~16P样式



Assembly Layout



P.C.B. LAYOUT

■ 技术参数 SPECIFICATIONS

- ◆ 适用线规: AWG.#30~#22
- ◆ Applicable Wire: AWG.#30~#22
- ◆ 额定电压: 250V DC/AC(rms)
- ◆ Rated voltage: 250V DC/AC(rms)
- ◆ 额定电流: 3A (AWG.#22)
- ◆ Rated Current: 3A (AWG.#22)
- ◆ 耐压值: 1000V AC/minute
- ◆ Withstand voltage: 1000V AC/min.
- ◆ 工作温度: -25°C ~ +85°C
- ◆ Working Temp.: -25°C ~ +85°C
- ◆ 绝缘电阻: ≥1000 MΩ
- ◆ Insulation resistance: ≥1000 MΩ
- ◆ 接触电阻: ≤20 mΩ
- ◆ Contact resistance: ≤20 mΩ

■ 材料 MATERIAL

- ◆ 绝缘体: 尼龙9T, UL94-V0
- ◆ Insulator: PA9T, UL94-V0
- ◆ 接触针: 黄铜
- ◆ Contact PIN: Brass
- ◆ 焊片: 磷铜
- ◆ Solder tab: Phosphor bronze

 Dongguan Jimda Electronics Co., Ltd. 东莞市津达电子有限公司		GENERAL TOLERANCE XX: ±0.40 X: ±0.30 .X: ±0.25 .XX: ±0.15		SCALE: 3.5:1 UNIT: mm SIZE: A4		DRAWN: 于腾 CHECK: 于腾 APPROVE: 肖志军		DATE: 2016.4.1 DATE: 2016.4.1 DATE: 2016.4.1		DOC. NO: E:\DWG\Production\XH PARTS NO: XH-LT-NA		TITLE: 工程图		REV.: A SHEET: 1/1	
--	--	--	--	---	--	---	--	---	--	---	--	-------------------	--	-------------------------------------	--