

## LINNEA-60-B

~60° + 90° beam optimized for 0.5 mm metal sheet or profile.

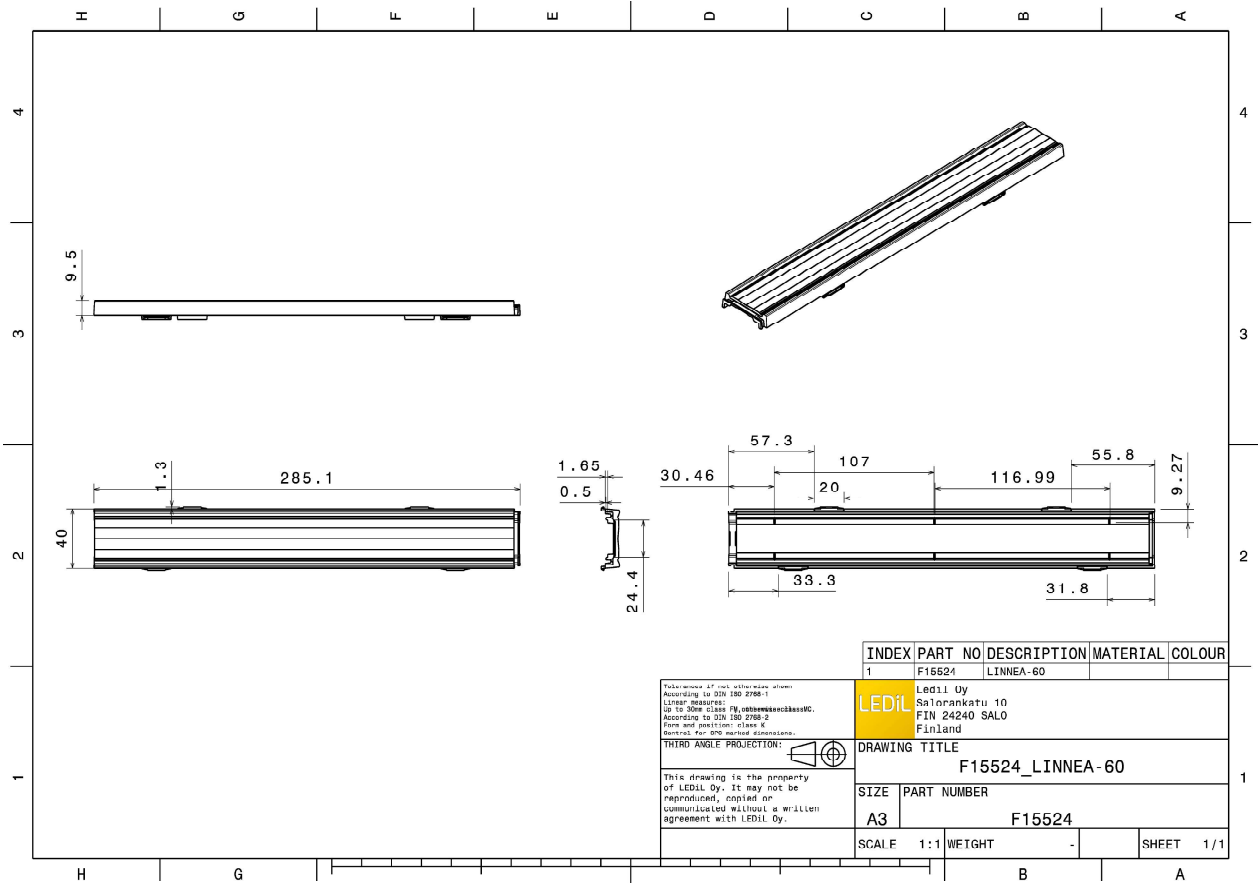
### TECHNICAL SPECIFICATIONS:

Dimensions	285.0 x 40.0 mm
Height	9.5 mm
Fastening	clips
Colour	clear
Box size	578 x 378 x 295 mm
Box weight	7.1 kg
Quantity in Box	180 pcs
ROHS compliant	yes ⓘ



### MATERIAL SPECIFICATIONS:

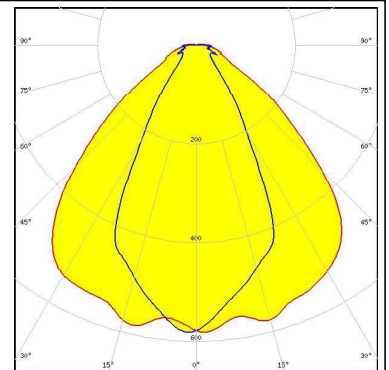
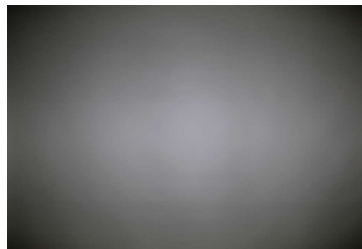
Component	Type	Material	Colour
LINNEA-60-B	Linear lens	PC	clear



#### PHOTOMETRIC DATA (MEASURED):

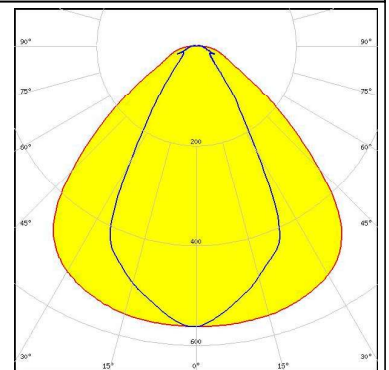
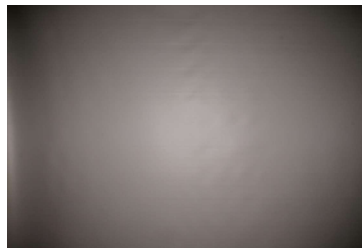
**CREE** 

LED XP-E  
 FWHM 96.0 + 54.0°  
 Efficiency 83 %  
 Peak intensity 0.590 cd/lm  
 LEDs/each optic 1  
 Light colour White  
 Required components:



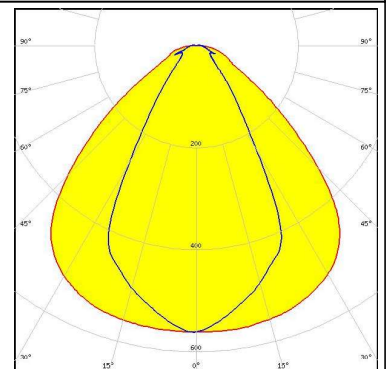
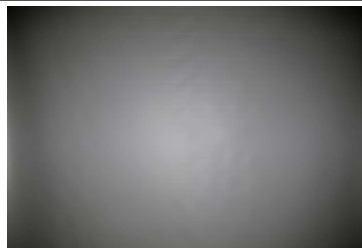
**Helvar**

LED L-iC-282-827-865-011A  
 FWHM 97.0 + 58.0°  
 Efficiency 84 %  
 Peak intensity 0.560 cd/lm  
 LEDs/each optic 1  
 Light colour White  
 Required components:



**Helvar**

LED LP-282-840-009A 60/300  
 FWHM 97.0 + 58.0°  
 Efficiency 84 %  
 Peak intensity 0.560 cd/lm  
 LEDs/each optic 1  
 Light colour White  
 Required components:



**Helvar**

LED LS-282-840-011A  
 FWHM 97.0 + 58.0°  
 Efficiency 84 %  
 Peak intensity 0.560 cd/lm  
 LEDs/each optic 1  
 Light colour White  
 Required components:

