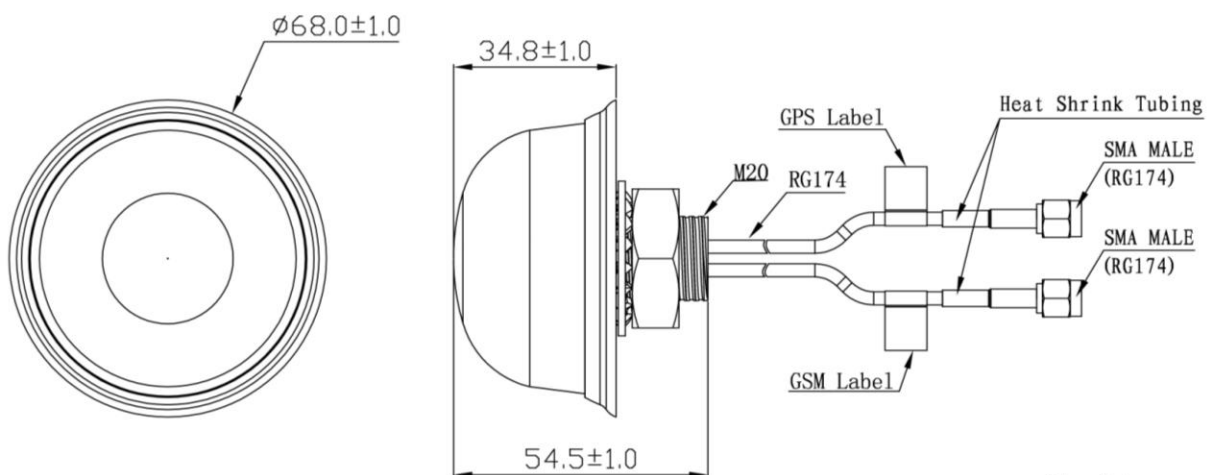


GPS+GSM Combination Antenna JCB601



DIMENSIONS



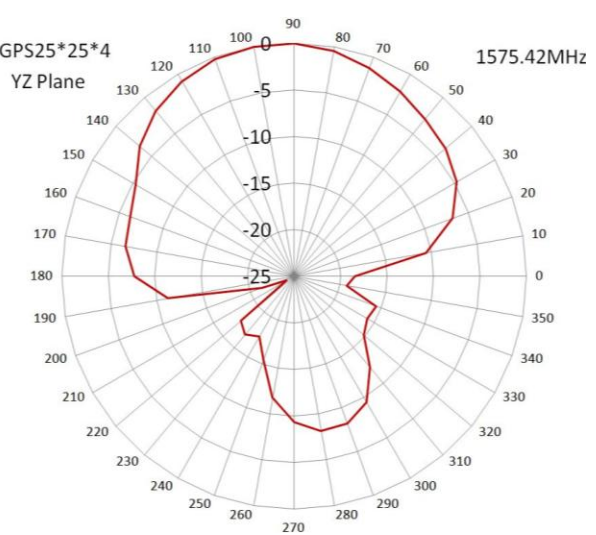
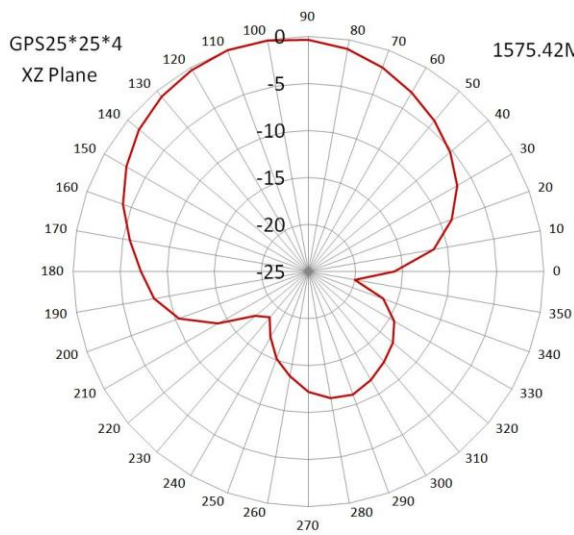
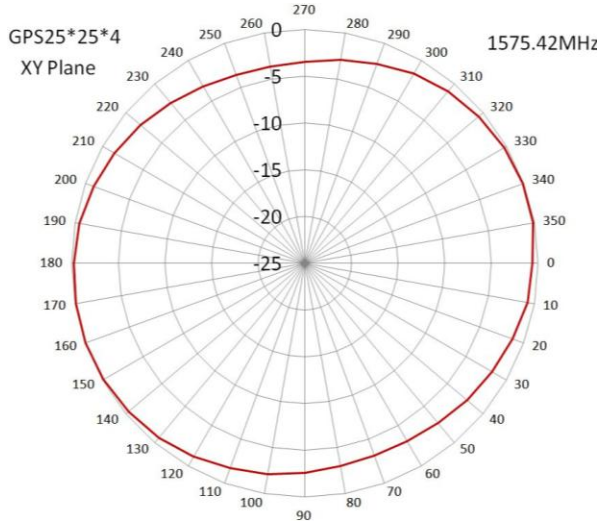
Unit: mm

SPECIFICATIONS

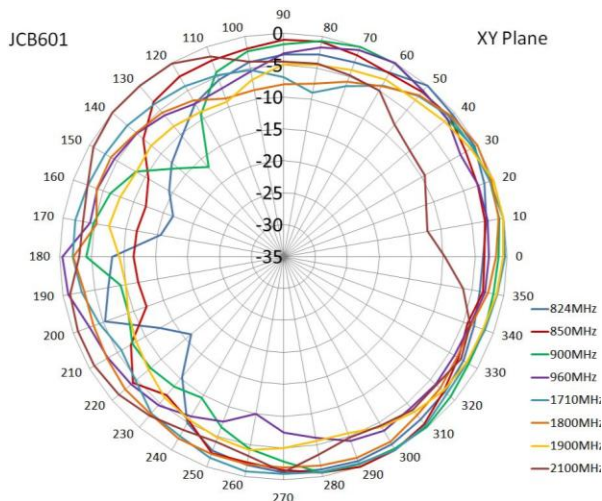
| Item | | Specifications | |
|---------------------|--------------------|--------------------------|--|
| GPS Antenna | Dielectric Antenna | Center Frequency | 1575.42±3MHz |
| | | Band Width | CF±5MHz |
| | | Polarization | RHCP |
| | | Gain | 2dBic (Zenith) |
| | | V.S.W.R | <1.5 |
| | | Impedance | 50Ω |
| | | Axial Ratio | 3dB (max) |
| | LNA | Gain | 28±2dB |
| | | Noise Figure | <2dB |
| | | V.S.W.R | <2.0 |
| Supply Voltage | | 2.2~5V DC | |
| Current Consumption | | <20mA | |
| GSM Antenna | | Frequency Range | 824~960MHz/1710~2170MHz |
| | | V.S.W.R | <2.0 |
| | | Polarization | Linear |
| | | Gain | 2.0dBi |
| | | Impedance | 50Ω |
| Mechanical | | Cable | RG174 |
| | | Connector | SMA/MCX/FAKRA or others |
| | | Material | Radome:ABS/Base:Cast Aluminum |
| | | Mounting Method | Screw |
| Environmental | | Operating Temperature | -40℃~+85℃ |
| | | Relative Humidity | Up to 95% |
| | | Ingress Protection | IP67 (exclude cable outlet) |
| | | Vibration | 10 to 55Hz with 1.5mm amplitude 2hours |
| | | Environmentally Friendly | ROHS Compliant |

Radiation Pattern

GPS Antenna



GSM Antenna



JIAXING JINCHANG ELECTRONIC TECHNOLOGY CO.,LTD

Add: 398#,Zhenye Road, South Street, Jiaxing, Zhejiang, China

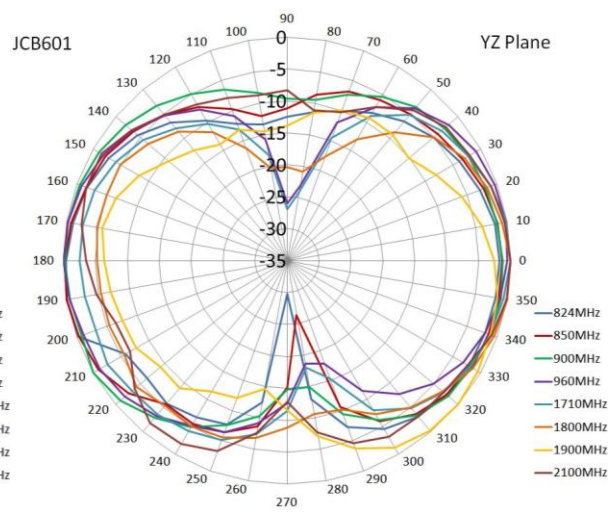
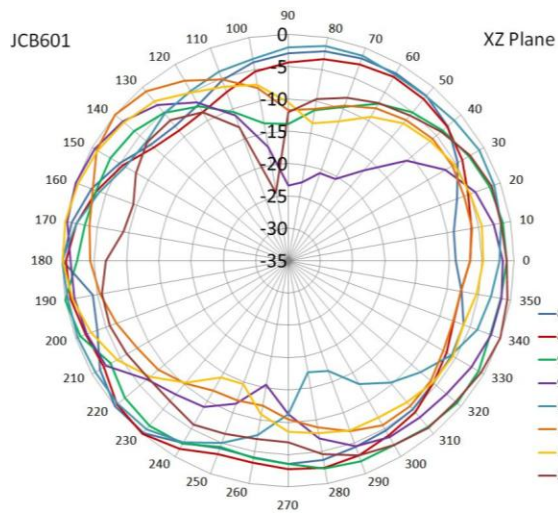
Http:// www.jinchanggps.com

E-mail:jcgps@vip.163.com

Tel: 86-0573-83692157/83692605/83958637 Fax:86-0573-83958635



Jinchang Electron Global Service



JIAXING JINCHANG ELECTRONIC TECHNOLOGY CO.,LTD

Add: 398#, Zhenye Road, South Street, Jiaxing, Zhejiang, China

Http:// www.jinchanggps.com

E-mail: jcgps@vip.163.com

Tel: 86-0573-83692157/83692605/83958637 Fax: 86-0573-83958635