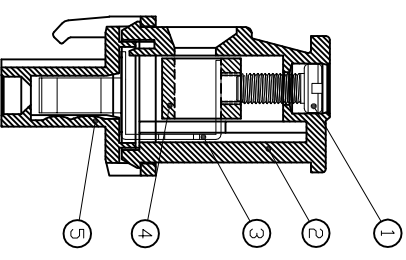
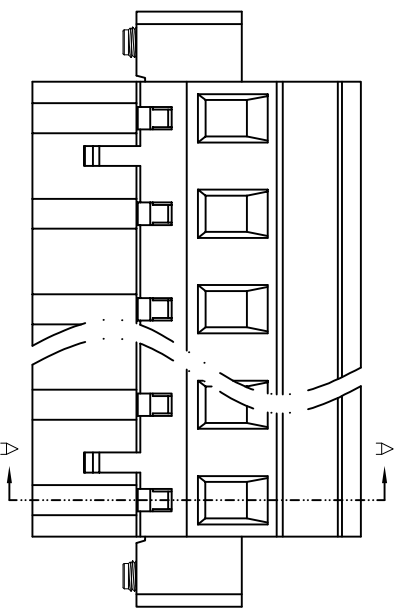
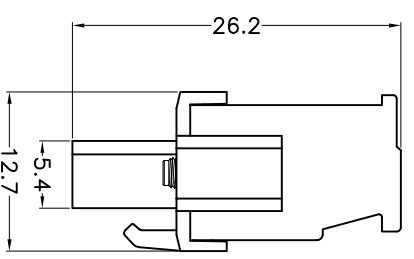
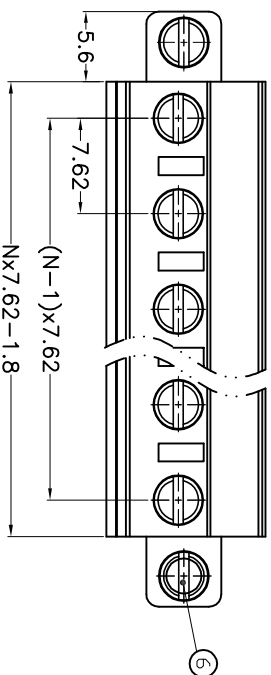
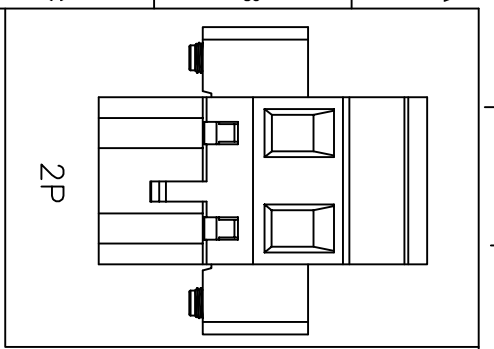
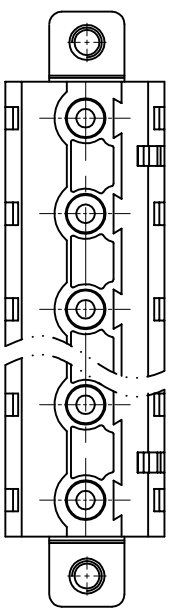


REV.	DESCRIPTION	DATE	DRAFTER	APPROVER
V1.0	DWG.REL	2023.9.13	ZHANG	JIN



SECTION A-A



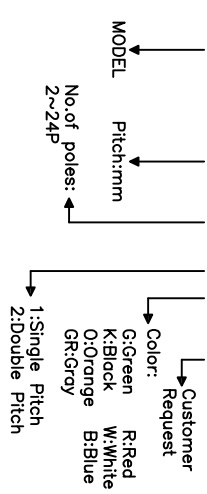
• Material
 ⓄScrew : M3.0 steel, Zinc plated, *- slot type
 ⓄHousing : PA66, UL94V-0
 ⓄContact : Copper alloy, Tin plated
 ⓄClamp : Copper alloy, Ni plated
 ⓄCover : PA66, UL94V-0
 ⓄScrew : M2.5 steel, Zinc plated, *- slot type

• Electrical
 UL IEC
 Rated voltage : 300V 400V
 Rated current : 15A 18A
 Contact resistance : 20mΩ(Max)
 Insulation resistance : 500MΩ/DC500V
 Withstanding Voltage : AC2500V/1min
 Wire range : 28-12AWG 2.5mm²

• Mechanical
 Operating temperature: -40°C ~ +105°C
 Soldering temperature: 250°C ±5/5sec
 Torque : 0.5N.m (4.43Lb.in)
 Strip length: 7-8mm

• Conform to REACH and RoHS

HOW TO ORDER
 KF2EDGKAM-7.62-XXP-1 X-XXXXX



Pitch range	Nominal dimension range	PROJECTION
>0	>0	0.1/10
~6	~30	∠
~10	~60	∠
~24	~100	∠
~30	~150	∠
±0.15	±0.30	±2'
±0.20	±0.30	
±0.30	±0.50	
±0.70	±1.00	
±1.30	±1.30	

DRAWING TYPE	CUSTOMER DRAWING	UNIT	TITLE
SCALE	1:1 SHEET 1 OF 1	mm	KF2EDGKAM-7.62-XXP-1X
DRAWING NO.	W10000392	A4	SERIES KF2EDGKAM

DF 慈溪市凯峰电子有限公司
 CIXI KAIFENG ELECTRONICS CO.,LTD