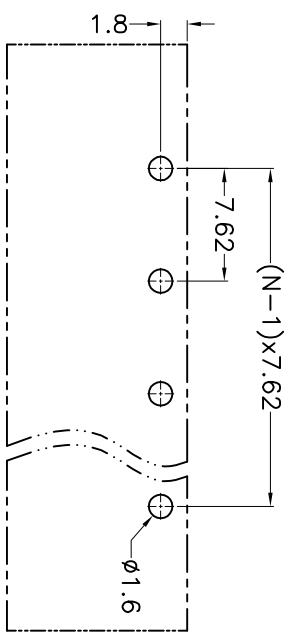
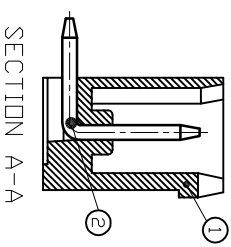
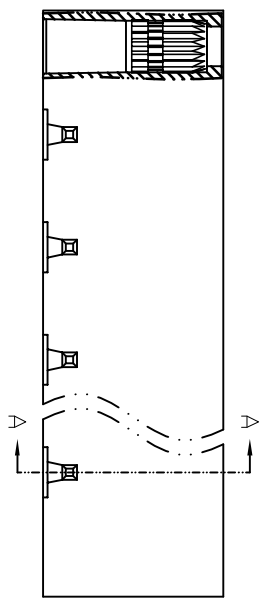
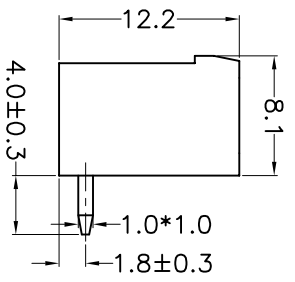
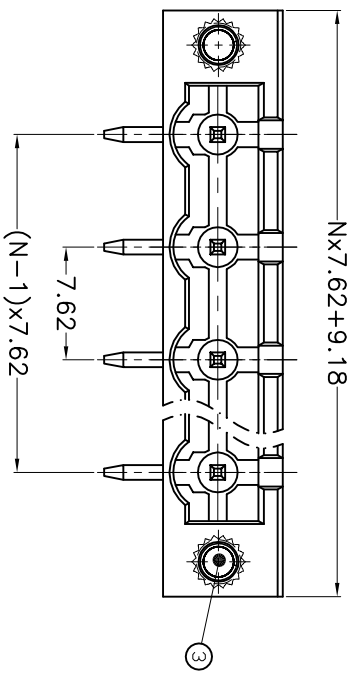


REV.	DESCRIPTION	DATE	DRAFTER	APPROVER
V1.0	DWG.REL	2023.9.09	ZHANG	JIN



P.C.B.LAYOUT

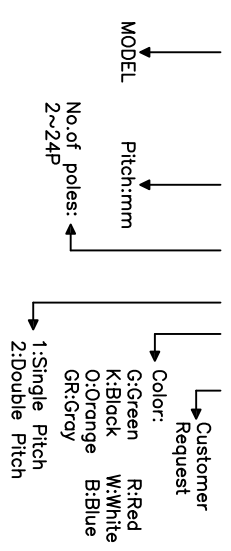
Pitch range	Nominal dimension range	PROJECTION
>0	>0	0.1/10
~6	~30	~
~10	~60	~
~24	~100	~
±0.15	±0.30	±2°
	±0.50	
	±0.70	
	±1.00	
	±1.30	

DRAWING TYPE	CUSTOMER DRAWING
SCALE	1:1
SHEET	1 OF 1
DRAWING NO.	W10000222

PROJECTION	TITLE
UNIT	KF2EDGRM-X-7.62-XXP-1X
mm	
SHEET SIZE	A4
SERIES	KF2EDGRM-X

- Material
 ØHousing : PA66, UL94V-0
 ØPin header : Copper alloy, Tin plated
 ØNut : M2.5,Copper alloy
- Electrical
 UL IEC
 Rated voltage : 300V 400V
 Rated current : 15A 20A
 Contact resistance : 20mΩ(Max)
 Insulation resistance: 500MΩ/DC500V
 Withstanding Voltage : AC2500V/1min
- Mechanical
 Operating temperature:-40°C~+105°C
 Soldering temperature:250°C±5/5sec
- Conform to REACH and RoHS

HOW TO ORDER
 KF2EDGRM-X-7.62-XXP-1 X-XXXXXX



DF 慈溪市凯峰电子有限公司
 CIXI KAIFENG ELECTRONICS CO.,LTD