

TINA3-WWW

~70° very wide beam. Assembly with holder and installation tape.

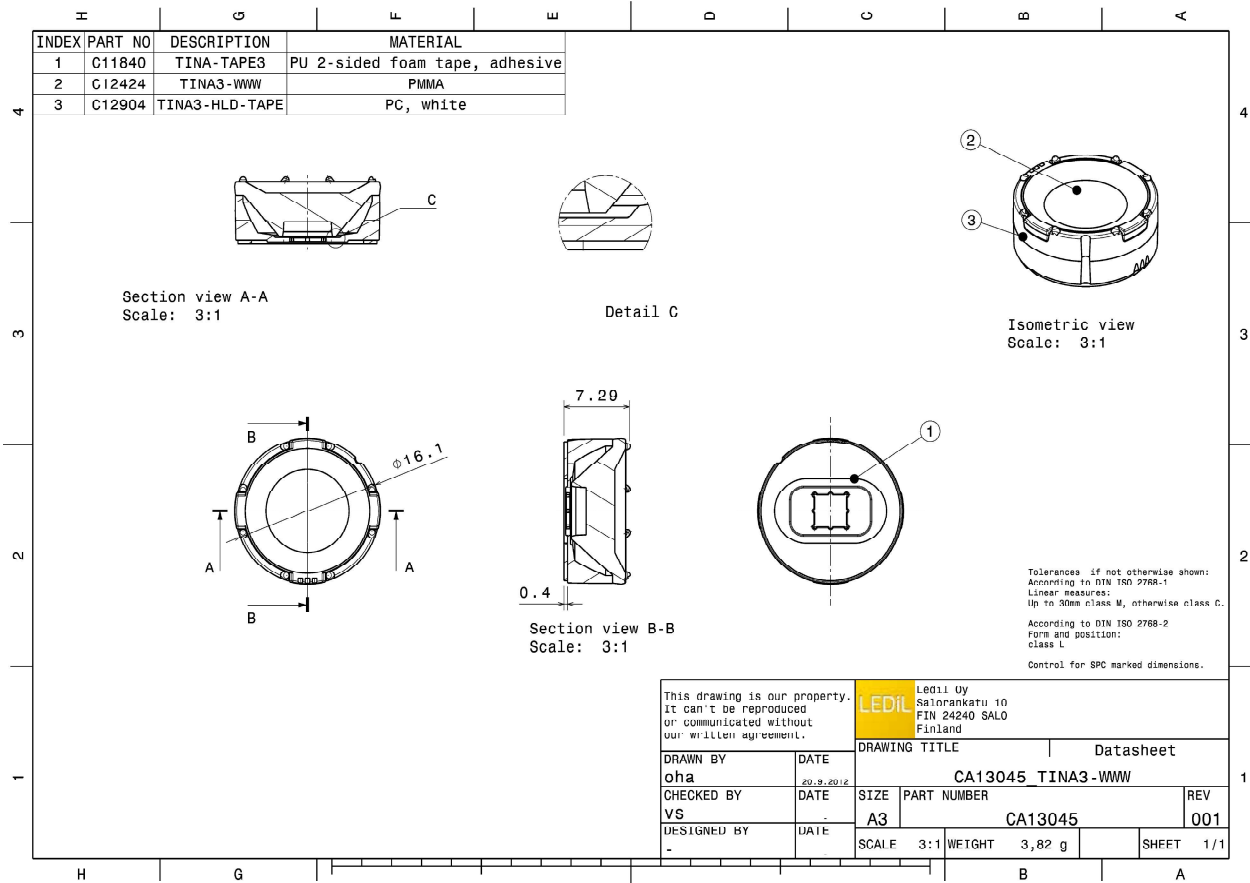
TECHNICAL SPECIFICATIONS:

Dimensions	Ø 16.1 mm
Height	7.3 mm
Fastening	tape
Colour	white
Box size	451 x 241 x 298 mm
Box weight	9 kg
Quantity in Box	5750 pcs
ROHS compliant	yes ⓘ



MATERIAL SPECIFICATIONS:

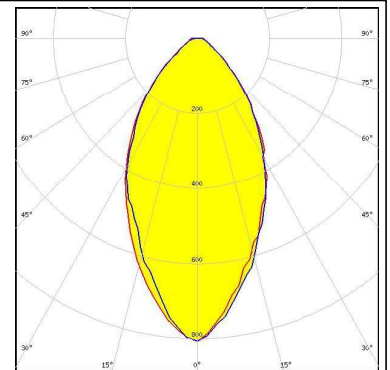
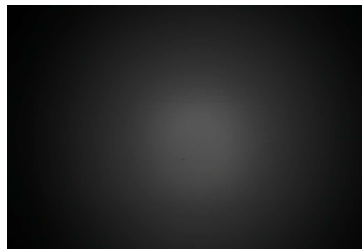
Component	Type	Material	Colour
TINA3-WWW	Single lens	PMMA	clear
TINA3-HLD-TAPE	Holder	PC	
TINA-TAPE3	Tape	PU tape	



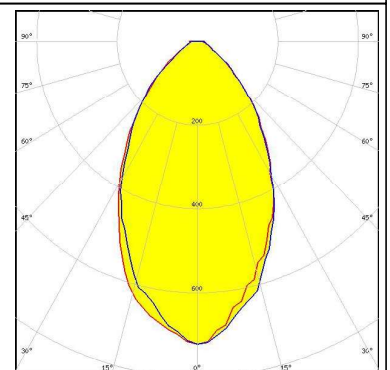
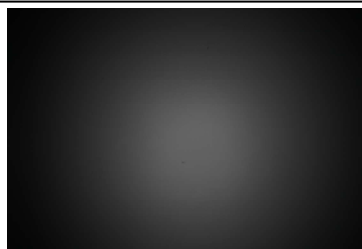
PHOTOMETRIC DATA (MEASURED):



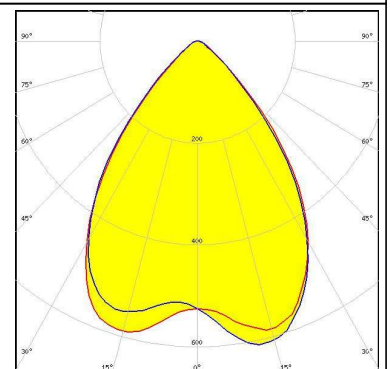
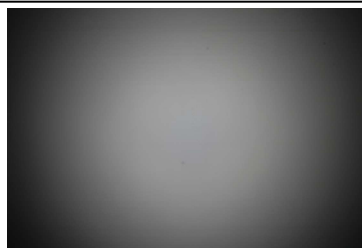
LED XP-E
FWHM 57.0°
Efficiency 92 %
Peak intensity 0.800 cd/lm
LEDs/each optic 1
Light colour White
Required components:



LED XP-G
FWHM 60.0°
Efficiency 92 %
Peak intensity 0.700 cd/lm
LEDs/each optic 1
Light colour White
Required components:



LED XP-G2
FWHM 76.0°
Efficiency 88 %
Peak intensity 0.500 cd/lm
LEDs/each optic 1
Light colour White
Required components:



LED XP-L HI
FWHM 80.0°
Efficiency 88 %
Peak intensity 0.610 cd/lm
LEDs/each optic 1
Light colour White
Required components:

