



MAGNETIC ANTENNA

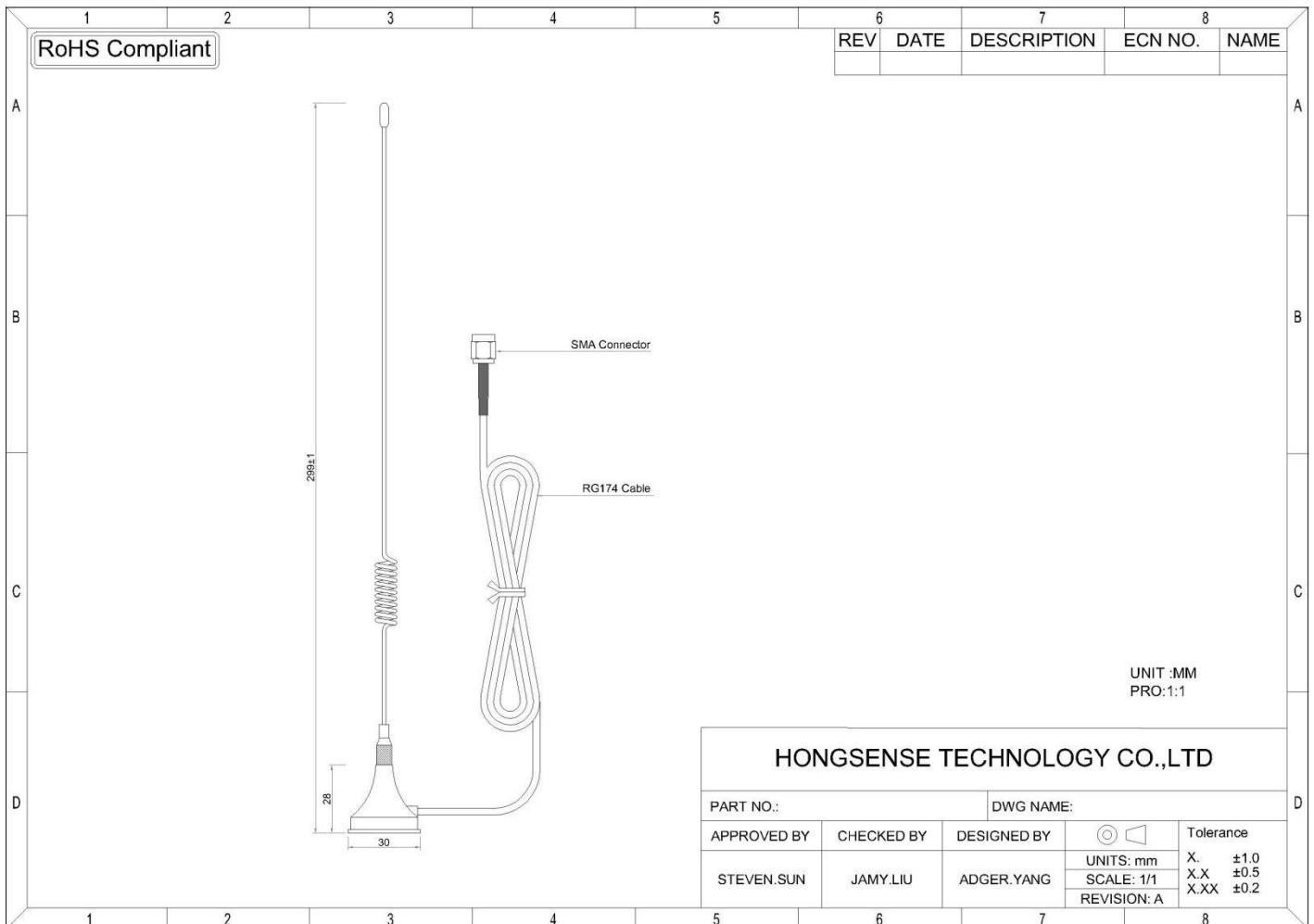
HSA-868MS1

• Electrical Specifications

Frequency Range: 868Mhz
 VSWR: ≤2.0
 Gain: 5dBi
 Polarization Type: Vertical
 Rated Power: 100W
 Input Impedance: 50Ohm

• Mechanical Specifications

Connector: SMA Male
 Cable: RG174
 Antenna Length: Ø30*299mm
 Radiator: Cuprum
 Working Temp: -40°C~+60°C
 Humidity: 5%-95%RH
 Weight: 57g



• VSWR

