

Data Sheet

LL04CR-AU45135L46

CREE 
▶ LED Solution Provider



■ Features & Typical Applications

- High efficiency
- Optimized Uniformity
- Roadway Lighting
- Anti-glare

■ Table of Contents

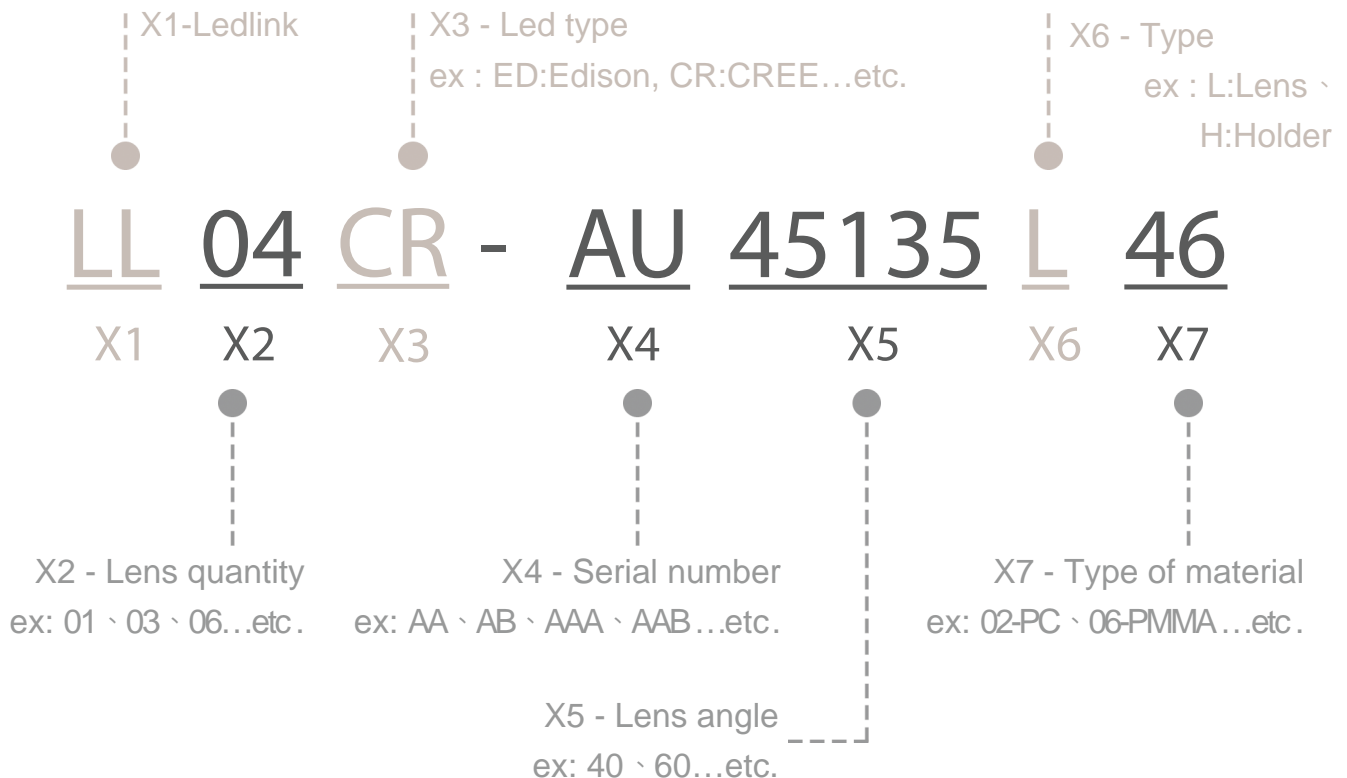
General Information & Product Nomenclature.....	P.2
Optical Specifications	P.3
Mechanical Specifications	P.4
Package Specifications	P.5

LL04CR-AU45135L46

General Information

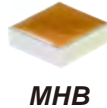
- Lens Material : PC 1225Z
- Operating Temperature range -40°C~+110°C(upper limit +120°C)
- Storage Temperature range -40°C~+110°C(upper limit +120°C)
 - * Average transmittance in visible spectrum 400nm~700nm>90%
- Usage and Maintenance:
 1. If necessary, clean lenses with mild soap, water and soft cloth.
 2. Never use any commercial cleaning solvents on lenses, like alcohol.
 3. Please handle or install lenses with wearing gloves, skin oils may damage lens or its optical characteristic.

Product Nomenclature



LL04CR-AU45135L46 Optical Specifications

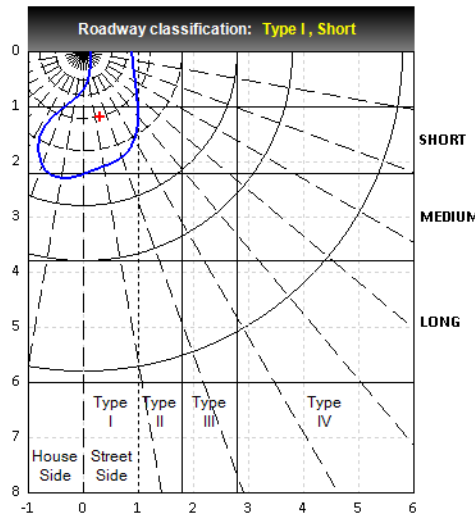
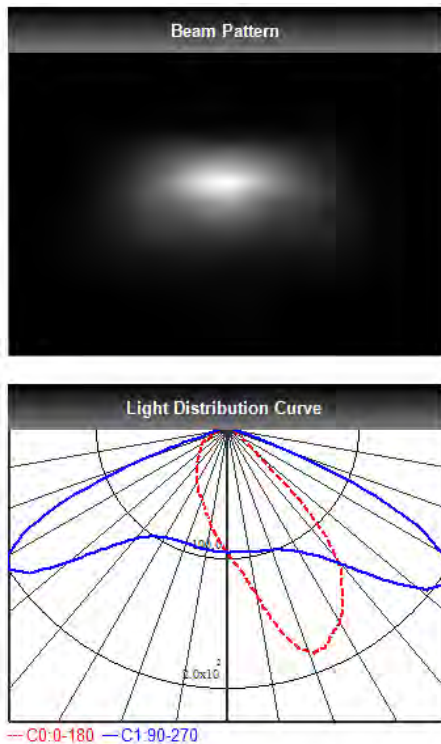
CREE 
▶ LED Solution Provider



Note: (1) All the results of analysis are based on 10 degrees of elevation.
(2) Tolerance: $\pm 10\%$.
(3) Led Luminous Flux(lm): 457 ($\pm 5\%$).

IES File: [Download](#)

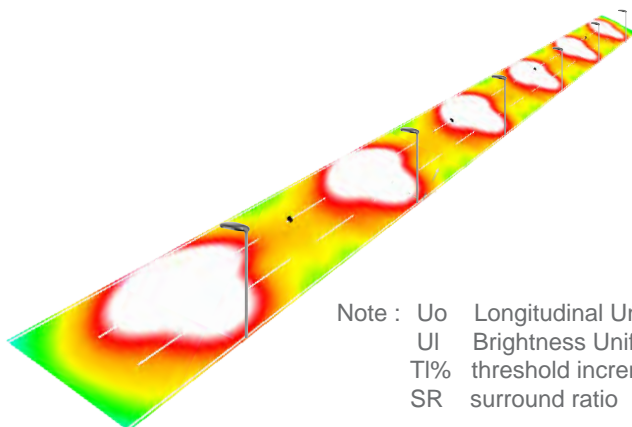
@elevation 0°



Elevation	Roadway Classification
0°	Type I, Short
5°	Type II, Short
10°	Type II, Short
15°	Type II, Short
20°	Type III, Short

DIALux Simulation Result

Analyzed file: [Download](#)



Note : Uo Longitudinal Uniformity
UI Brightness Uniformity
TI% threshold increment
SR surround ratio

Recommend configuration condition		
Height	=	10m
Distance	=	35m
Roadwidth	=	10.5m
Elevation	=	15 degree
Overhang	=	1.0m
Result		
Emin / Emax	=	0.38
Emin / Eavg	=	0.64
UI	=	0.33
Uo	=	0.47
TI	=	5%
SR	=	0.6

*The results would be similar if the configuration conditions are equally magnified or minified.

*This testing result is obtained through testing the popular rank LED samples which provided by the original manufacturer. Hence, the testing results would be varied as the users choose same LED model but different rank.

*The analyzed file require DIALux v4.11 and above to open.

LL04CR-AU45135L46 Mechanical Specification

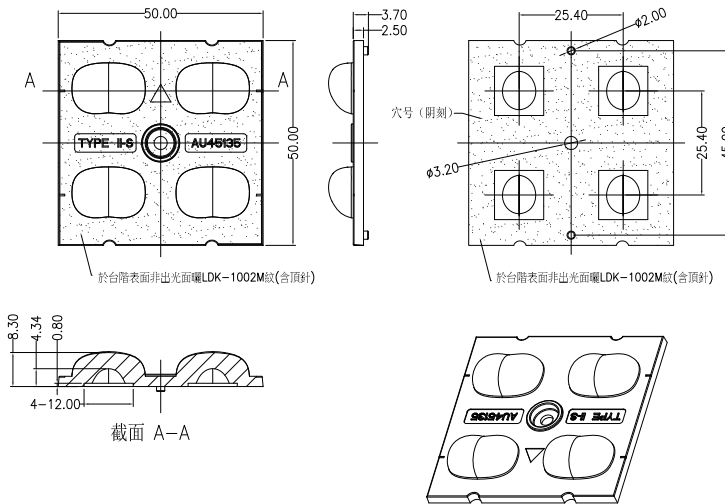
Note: (1) All dimensions are in mm.

1. Fixing method

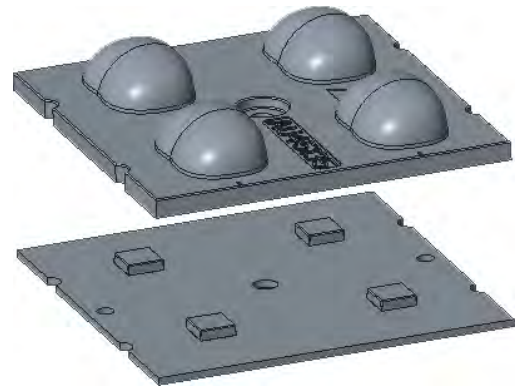
Glue
 Screw
 Tape
 Fixing-ring
 Frame

*Screw : The Maximum tightening torque for centre screw is 0.6Nm, which is mainly screw in for assembly.

2. Lens dimension



3. Assembly instruction



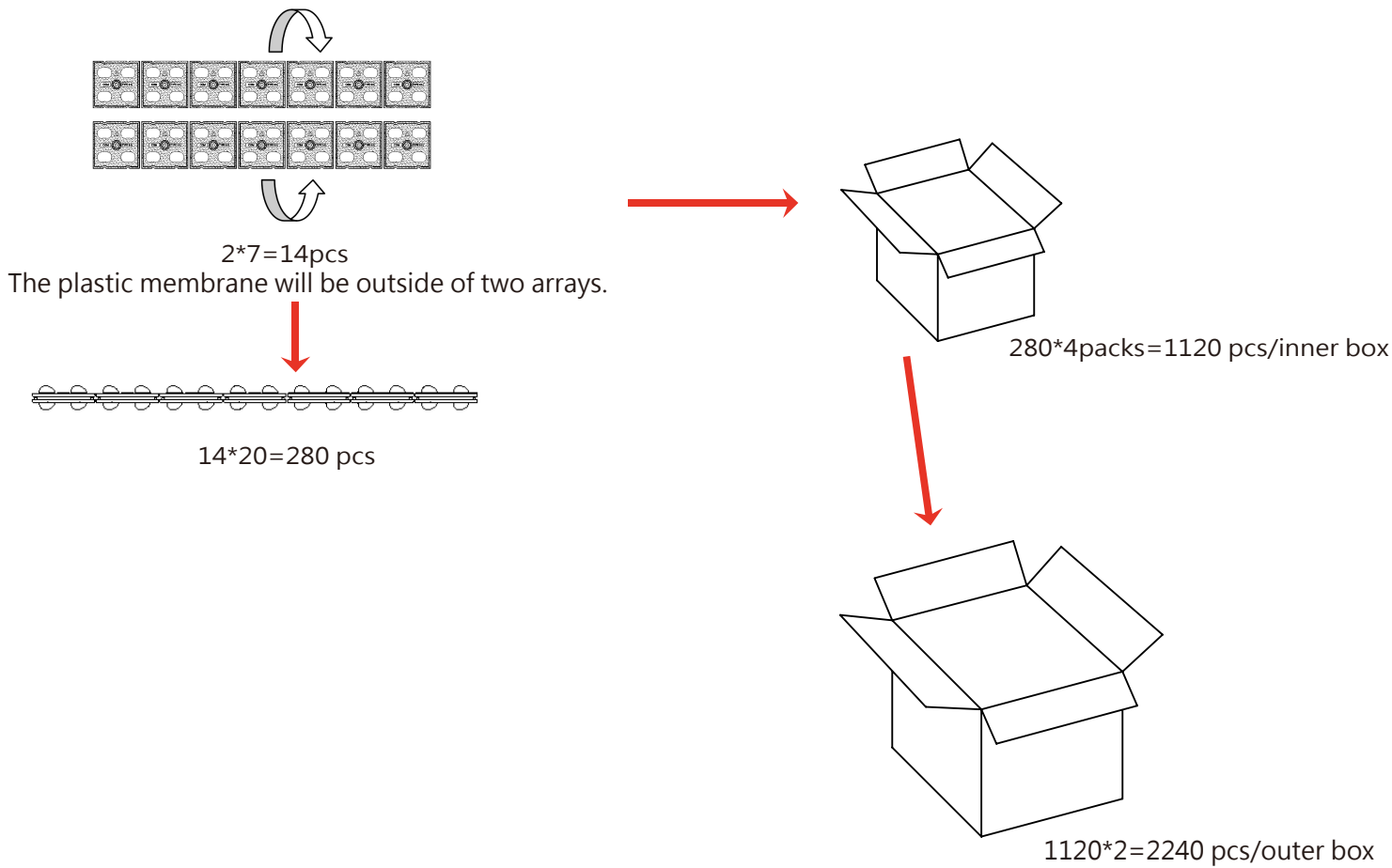
4. Assembly dimension

5. View assembly lens with MCPCB:



LL04CR-AU45135L46 Package Specifications

Item	Quantity	Total	Size(L*W*H)	G.W
Plastic membrane	14 pcs	14 pcs		
Inner box	280pcs*4 /outer box	1120 pcs	40*37*21 cm	6.6g
Outer box	1120pcs*2 /outer box	2240 pcs	42*39*46 cm	



Note: