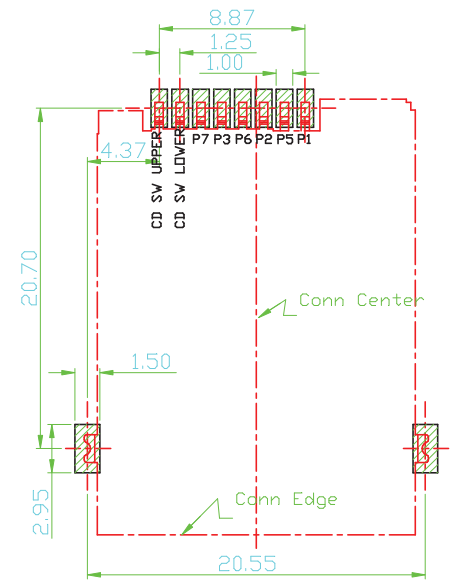
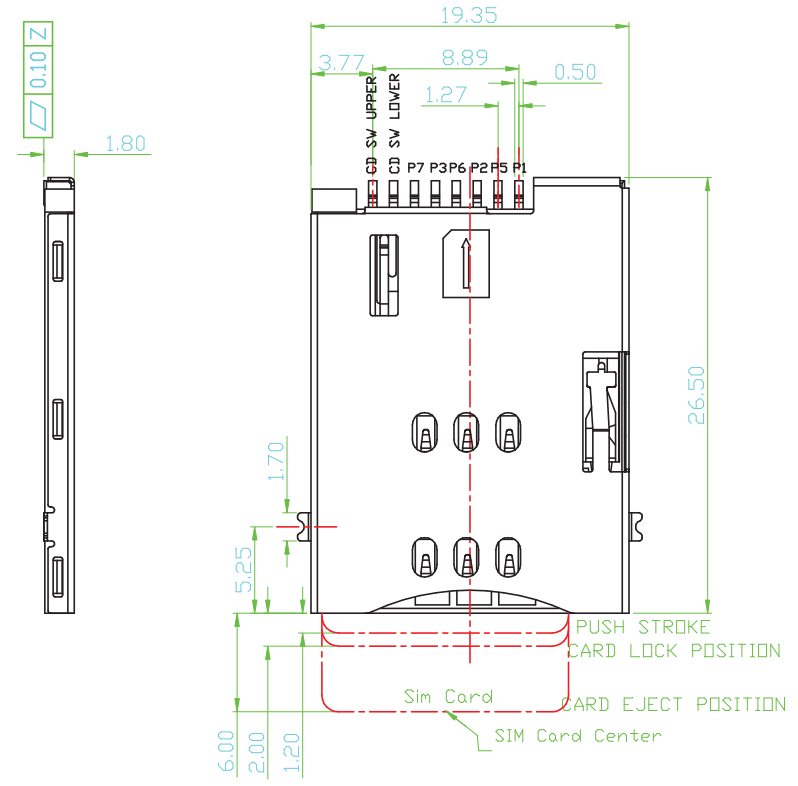
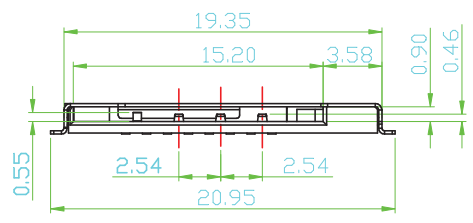


REV.	ECN.NO.	MODIFY.CONTENT	DATE
A		NEW	2013/11/02



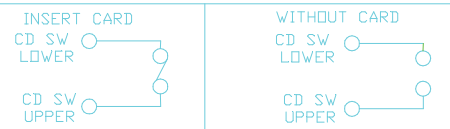
Specification:

- *Electrical Characteristics:
 - Current Rating:0.5A.
 - Withstanding Voltage:AC500V r.m.s.
 - Insulation Resistance:1000Megohms Minimum at DC 500V
 - Contact Resistance:100Miliohms Maximum.
- *Mechanical Characteristics:
 - Mating Cycles:3000 Insertions.
- *Environmental:
 - Operating Temperature:-40°To+60°



CONNECTOR TERMINAL NO	PIN NO
PIN 1	VCC:PWR SIGNAL AND GND
PIN 2	RST:RESET SIGNAL
PIN 3	CLK:CLOCKING SIGNAL
PIN 5	GND:PWR SIGNAL AND GND
PIN 6	VPP:PROGRAMMING VOLTAGE
PIN 7	I/O:SERIAL DATA INPUT/OUTPUT

Circuit Diagram for Card Detect Switch



GENERAL TOLERANCE	DWG NO.	A1102-003	APP.D:	spring	Scale	1:1
X±0.25	x.??5?	Title	SIM CARD PUSH (6+2PIN)	CHKD:	UNIT	mm
.X±0.20	.x??2?		H=1.80mm 无柱	DR:		
.XX±0.15	.xx??1?	Part NO.	WL-SIM750-002	Date	2013/11/02	
.XXX±0.08	.xxx??0.5?	深圳市微连电子有限公司 Shenzhen Welink Electronics Co.,Ltd				
SHEET	1/1					