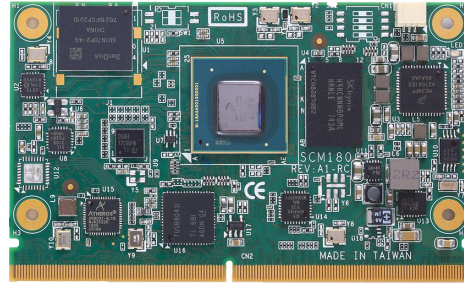


SCM180 NEW

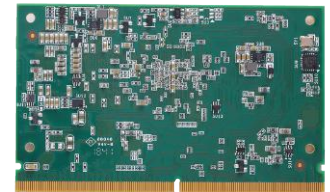
SMARC v2.0 SoM with i.MX8M Quad/Dual 1.3 GHz (Industrial) SoC, 1GB/2GB Memory, 8GB eMMC, CAN, MIPI CSI/DSI, HDMI 2.0

Features

- SMARC 2.0 (82 x 50 mm)
- Ultra-Low Power i.MX8M Dual/Quad A53 Core
- Single M4 Core
- HDMI 2.0a up to 4K
- MIPI DSI or Dual Channel LVDS
- MIPI CSI
- 10/100/1000 Mbps Ethernet
- USB3.0, USB OTG,
- PCIe 2.0
- CAN 2.0B
- Audio



▲ Top View



▲ Bottom View

Core System

Processor	Freescale i.MX8M series SoC with Quad/Dual A53
System Memory	Onboard LPDDR4 1GB 3200Mbps, up to 4GB
Operating System	Linux Kernel, QNX, Android
Storage	Onboard eMMC 8GB, up to 64GB; or SD Card
RTC	Battery on Baseboard Required
Size	82 x 50 mm
Board Thickness	1.2 mm ± 0.1 mm
Operating Temperature	0°C to +85°C (32°F to +185°F) (commercial) -40°C to +85°C (-40°F to +185°F) (industrial)

Ordering Information

Standard	
SCM180-Dual-I	SCM180 with Freescale i.MX8M series SoC Dual A53, 1GB RAM, 8GB eMMC, CAN, HDMI 2.0
SCM180-Quad-I	SCM180 with Freescale i.MX8M series SoC Quad A53, 2GB RAM, 8GB eMMC, CAN, HDMI 2.0
7118S180000E	SCM180 Heatsink
7128S180000E	SCM180 Heatspreader

I/O

Graphics	1 x MIPI DSI 4 Lane; or Dual Channel LVDS 1 x HDMI 2.0; or DP 1.3
Camera	2 x MIPI CSI2 v1.1 (2 and 4 lane)
Ethernet	1 x 10/100/1000 Mbps Ethernet
USB	1 x USB 2.0 1 x OTG client 2 x USB3.0
COM	2 x COM with TX/RX/RTS/CTS 2 x RX/TX (1x Debug Console)
I ² C	3 x I ² C interface
QSPI/SPI	1 x QSPI with 2 Chip Select. 1x SPI with 2 Chip Select
Audio	1 x I ² S
CAN	2 x CAN 2.0B
GPIO	Up to 12