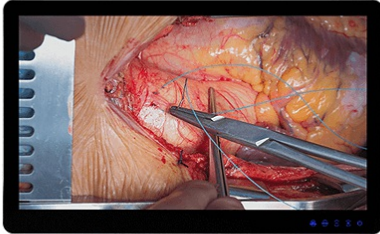




STAV5521AMA 55" Full HD Medical Display

- > IP65 in front & IPx1 whole unit
- > ALS (optional)
- > Calibration mode (optional)
- > SDI Solution(optional)
- > Light box mode
- > PSM Ppriority Signal Management
- > User modes for different settings
- > PIP &PBP



+ Spec

Panel	
LCD Size	55"
Display Type	Full HD
Resolution	1920 x 1080
Luminance	600 Cd/m2
Contrast ratio	4000:1
Viewing angle	89/89 Deg. Horizontal &Vertical
Backlight	LED
Touch Type	Projective Capacitive
AG Protection Glass	Yes
DICOM compliant	Yes
I/O	
RS232	Yes
Input Interface	2 x DVI 1 x Display Port 1 x VGA 1 x CVBS 1 x S-Video 1 x YPbPr 1 x USB HUB
Output Interface	1 x CVBS 1 x S-Video 1 x YPbPr
Mechanical & Environmental	
Power Type	AC In
Operating Temperature	0°C ~ 40°C (32°F ~ 104°F)
Storage Temperature	-20°C ~ 60°C (-4°F ~ 140°F)
Operating Humidity	10%~90% Relative Humidity, Non-condensing
Weight	46 Kgs
Construction	GM Metal
Mounting Kit	Stand (Optional) VESA Mount kit (Optional) Wall Mount kit (Optional)
Vibration Test	With SSD/mSATA: 1.5Grms, IEC 60068-2-64, Random, 5 ~ 500Hz, 30min/axis
Shock Test	With SSD/mSATA: 10Grms, IEC 60068-2-27, Half Sine, 11ms
System Fan	Fanless
Dimension	1314.6 x 785.4 x 85 mm
Certifications	
Certification Information	CE(EN60601-1,EN60601-1-3) FCC certified cTUVus certified

+ Ordering

STAV5521AMA01
STAV5521AMA with AG Glass

STAV5521AMA02
STAV5521AMA with AG PCAP