

CONNTHERM

Switch

Rocker Switch Series

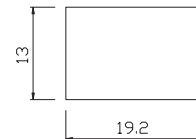
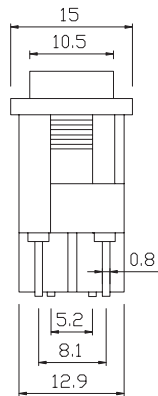
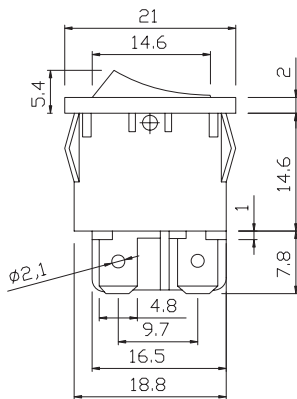
MATERIAL

1. Housing: Nylon 66
2. Rocker: PC & PA66
3. Contacts: Silver Alloy
4. Terminal: Brass Silver Plated
5. Lamp: Neon Lamp, Tungsten Lamp
6. Spring: SWP, SUS
7. Movable Arm: Brass Silver Plated

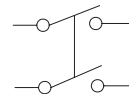


ELECTRICAL

1. Electrical Rating: 6A 250VAC 5E4 T85
8A 250VAC 1E4 T85
10A 125VAC 6E3 T125
10(4)A 250VAC 1E4 T125
2. Mechanical life: Over 30000 Cycles
3. Electrical life: Over 50000 Cycles
4. Contact Resistance: $\leq 50\text{m}\Omega$
5. Insulation Resistance: 500VDC, 500M Ω Min
6. High Voltage Resistance: $>1500\text{V}$ 1 min
7. Ambient Temperature: Terminal Side $-20^{\circ}\text{C}\sim+85^{\circ}\text{C}$;
Actuating Side $-20^{\circ}\text{C}\sim+55^{\circ}\text{C}$
8. Storage Temperature: $-30^{\circ}\text{C}\sim+80^{\circ}\text{C}$ Max
9. Atmospheric Humidity: Max 85%
10. Actuating force: 4~8N (depends on different switch function)
11. Flammability: UL94 V-2
12. Temperature rise at the terminal: Max 30°C (UI1054)
13. Solder ability of terminal: Max 350°C 3S



Panel hole size



SWITCHING CIRCUIT