

# SW-015

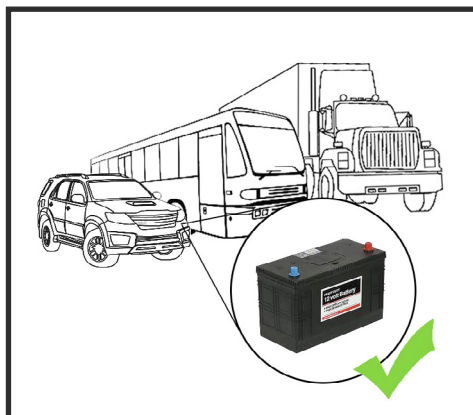
# 5 Port Gigabit Ethernet Switch

5 Port Unmanaged Gigabit Ethernet Switch Wall Mountable

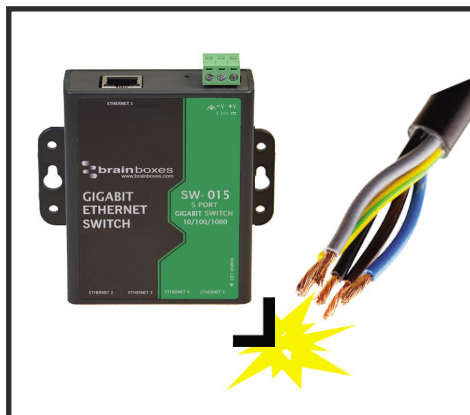
- 5 Port Gigabit Ethernet Switch
- Power input: +5V to +30V DC
- Compact design with integral wall mount
- -10°C to +60°C/+14°F to +140°F temperature range
- Integral wall mount or optional DIN rail mount
- Connection LEDs on each Port



<b>UK CA</b>	<b>MET</b> E115041	Complies with UL 60950-1 CSA C22.2 No. 60950-1	<b>CE</b>	<b>IP30</b>	<b>5</b>	+60°C -10°C	<b>DIN</b>
--------------	-----------------------	---	-----------	-------------	----------	----------------	------------



+5 to +30 Volt Power Input enables the device to be run from a standard car battery - ideal for in vehicle applications



Non conducting polyamide casing prevents electrical conduction - for safer installation



Integral wall mount option can be used with MK-048 clips to allow DIN rail mounting

	<b>RoHS</b>	<b>AEO</b> UK Authorized Economic Operator	<b>MADE IN BRITAIN</b>	<b>GLOBAL ACCREDITATIONS</b>	<b>LIFETIME SUPPORT</b>	<b>LIFETIME WARRANTY</b>	<b>nqa.</b> ISO 9001 QUALITY MANAGEMENT	<b>nqa.</b> ISO 14001 ENVIRONMENTAL MANAGEMENT
--	-------------	---	------------------------	------------------------------	-------------------------	--------------------------	---	--

# SW-015

# 5 Port Gigabit Ethernet Switch

No software needed: Simply plug in any ethernet cable

All Ethernet ports are Auto MDI/MDIX supporting straight through or crossover Ethernet cables

Automatic detection of data transmission speed: 10 or 100 or 1000 MBps

-10°C to +60°C/+14°F to +140°F temperature range



Easy Wire Removable screw terminal block

Wide Range Input Power: +5VDC to +30VDC

Power consumption is optimised based on the status of the link device

Wall mount holes compatible with MK-048 DIN mount clips (MK-048 sold separately)

IP30 Non-conducting polyamide case

## Connectors

Screw Terminals	3 way x 0.2inch/5.08mm pitch power supply
Wire Thickness	0.150 inch, 3.81mm, 20 pins, 12+8 screw terminals, #26 - #16 AWG, 0.14mm <sup>2</sup> -1.3mm <sup>2</sup>

## Power Supply

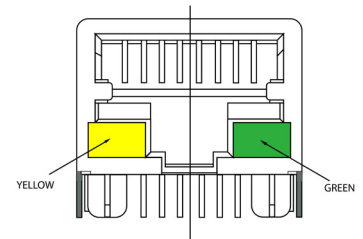
Power Consumption	3.6W Max: 720mA@ +5VDC/120mA@+30VDC
Power Supply input	Unregulated +5V to +30Volts DC, reverse polarity protection
Isolation	1500VRMS Magnetic isolation from Ethernet

## Environmental

Operating Temperature	-10°C to +60°C / +14°F to +140°F
Storage Temperature	-10°C to +70°C / +14°F to +158°F
Ambient Relative Humidity	5 to 95% (non-condensing)

## Magjack LED Information

Link/Activity LED	Solid green	Connection established
	Flashing Green	Data communication
Speed LED	Yellow	1Gbs
	Green	100Mbps
	Both	10Mbps

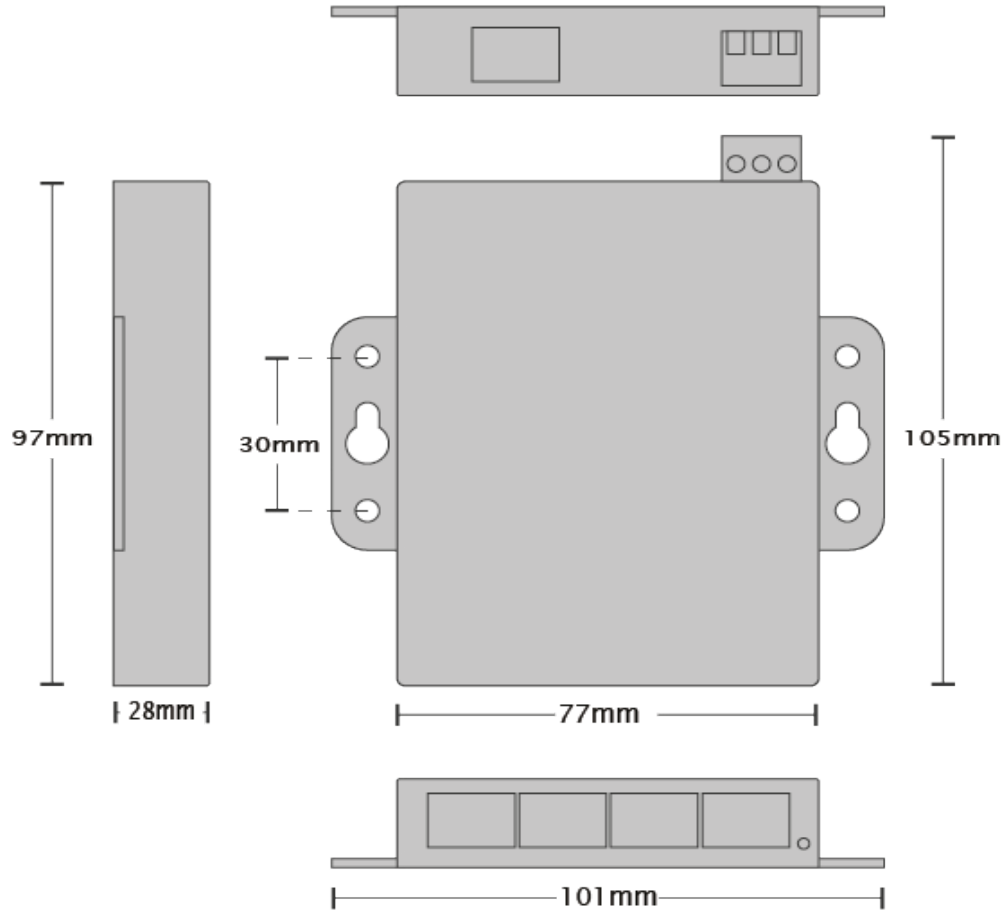


## Ethernet

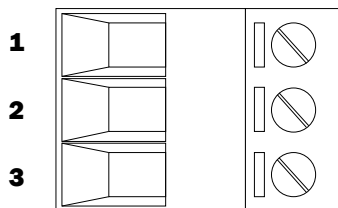
Ethernet Port	5 x RJ45 jack, 10/100/1000Mbps autosensing, crossover auto sensing (Auto MDIX)
---------------	--

Protection	1,500 Volts magnetic isolation between ports
------------	--

Housing	IP-30 rated non-conducting polyamide case
---------	---

**SW-015**
**5 Port Gigabit Ethernet Switch**

**Power Terminal Pin Outs**

PIN	FUNCTION
<b>1</b>	<b>+V Power</b>
<b>2</b>	<b>-V Power</b>
<b>3</b>	<b>Functional Earth</b>


**Ethernet Ports x4 Pin Outs**

PIN	FUNCTION
<b>1</b>	<b>TxRxA+</b>
<b>2</b>	<b>TxRxA-</b>
<b>3</b>	<b>TxRxB+</b>
<b>4</b>	<b>TxRxC+</b>
<b>5</b>	<b>TxRxC-</b>
<b>6</b>	<b>TxRxB-</b>
<b>7</b>	<b>TxRxD+</b>
<b>8</b>	<b>TxRxD-</b>

**Lifetime Warranty and Support:**

We can help with every aspect of your project, from getting you up and running to custom application.

## SW-015

## 5 Port Gigabit Ethernet Switch

### Product Information

Product Weight	0.1289 kg/4.55 ounces
Product Dimensions	106x101x26 mm/4.2x4.0x1.1 inches

### Packaging Information

Packaging	Quick Start Guide
Device	5 Port Gigabit Ethernet Switch
Packaged Weight	0.209 kg/7.37 ounces
Packaged Dims	160x140x50mm/6.3x5.5x1.9 inches
GTIN Universal Code	837324004366

### Approvals

Industry Approvals	Microsoft Certified Gold Partner, WEEE, RoHS, AEO (C-TPAT), CE, METL Complies with UL 60950-1, UKCA
--------------------	--

### Product Support

Warranty	Lifetime - online registration required
Support	Lifetime Web, Email and Phone Support from fully qualified, friendly staff who work in and alongside the Product Development Team

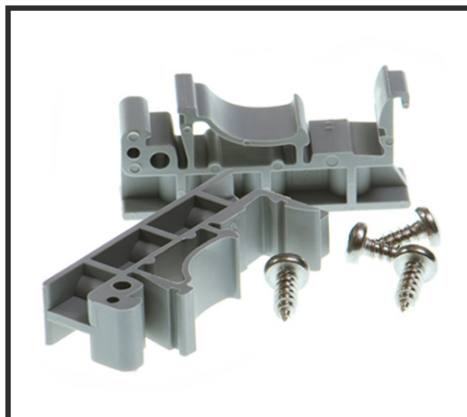
### Additional Information

OEM option	Available for bulk buy OEM
Made In	Manufactured in the UK by Brainboxes Winner 2005 European Electronics Industry Awards 'Manufacturer of the Year'
Customisable	Brainboxes operate a 'Perfect Fit Custom Design' policy for volume users. More info:sales@brainboxes.com



#### PW-600

Power supply with connectors for UK, USA, EU and AUS mains socket. 'Tails' are suitable for connecting to screw terminal blocks.



#### MK-048

DIN Rail Mounting Kit Suitable for attaching to SW-005 to make device clip on to a DIN rail.



#### SW Range

Switch products available in a wide range of formats and specifications.

[www.brainboxes.com](http://www.brainboxes.com)