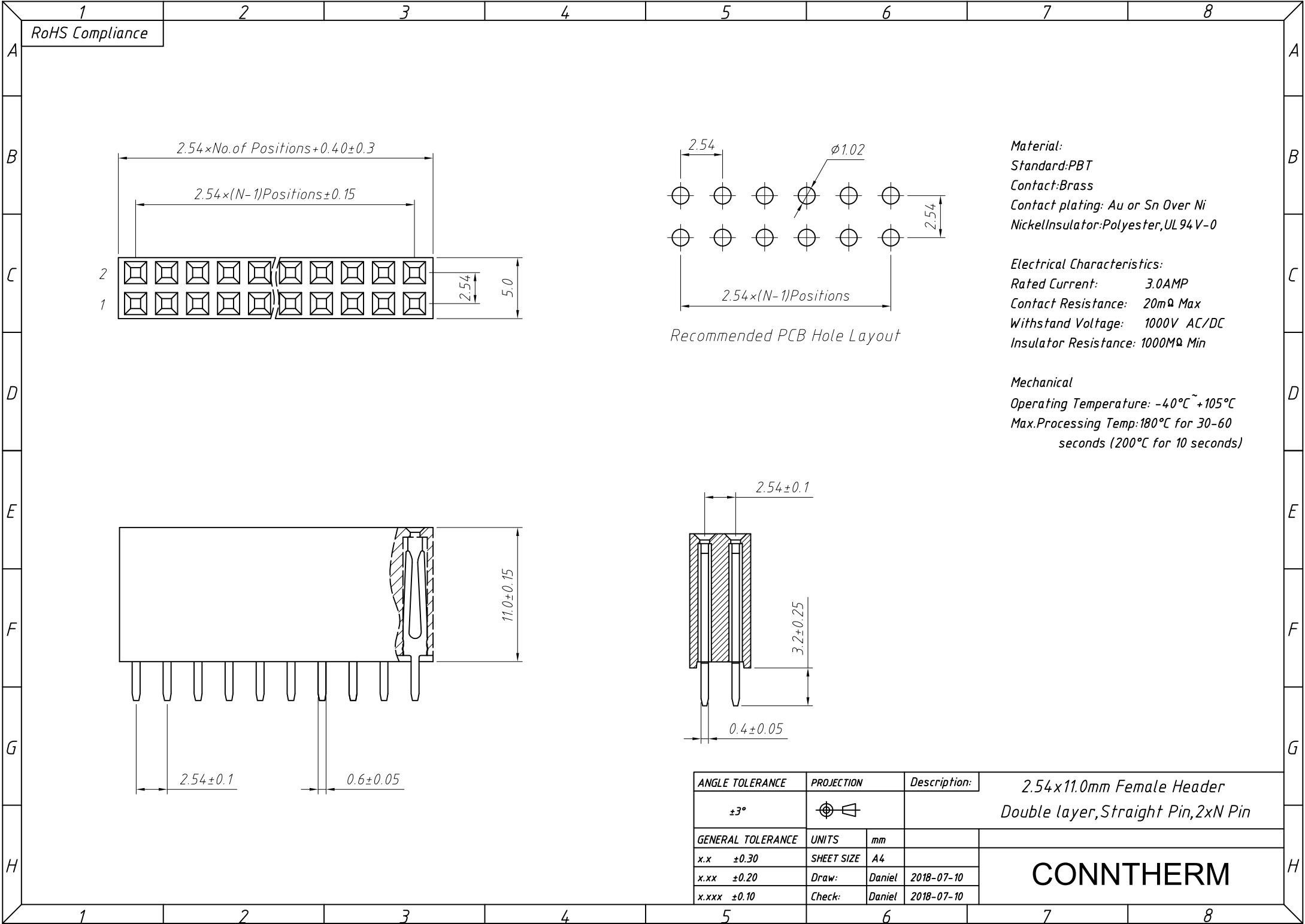


1  
RoHS Compliance

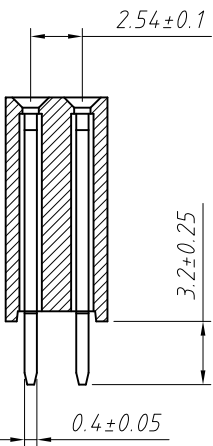


**Material:**  
 Standard:PBT  
 Contact:Brass  
 Contact plating: Au or Sn Over Ni  
 NickelInsulator:Polyester,UL94V-0

**Electrical Characteristics:**  
 Rated Current: 3.0AMP  
 Contact Resistance: 20mΩ Max  
 Withstand Voltage: 1000V AC/DC  
 Insulator Resistance: 1000MΩ Min

**Mechanical**  
 Operating Temperature: -40°C ~ +105°C  
 Max.Processing Temp:180°C for 30-60 seconds (200°C for 10 seconds)

Recommended PCB Hole Layout



ANGLE TOLERANCE	PROJECTION	Description:	2.54x11.0mm Female Header Double layer, Straight Pin, 2xN Pin
±3°			
GENERAL TOLERANCE	UNITS	mm	<b>CONN THERM</b>
x.x ±0.30	SHEET SIZE	A4	
x.xx ±0.20	Draw:	Daniel 2018-07-10	
x.xxx ±0.10	Check:	Daniel 2018-07-10	