

# D

# 6015-K

60x60x15mm(2.36"x2.36"x0.59")



HOUSING	Thermoplastic PBT, UL94V-0
IMPELLER	Thermoplastic PBT, UL94V-0
BEARING	Ball or Sleeve
OPERATING TEMPERATURE	-10°C to + 60°C
DIELECTRIC STRENGTH	5mA Max. at 500 VAC for 1 minute
INSULATION RESISTANCE	10M $\Omega$ min. @500 VDC
WEIGHT	35 g
ROHS COMPLIANCE	Yes
IP LEVEL	IP21 (Special IP Rating On Request)

# 60

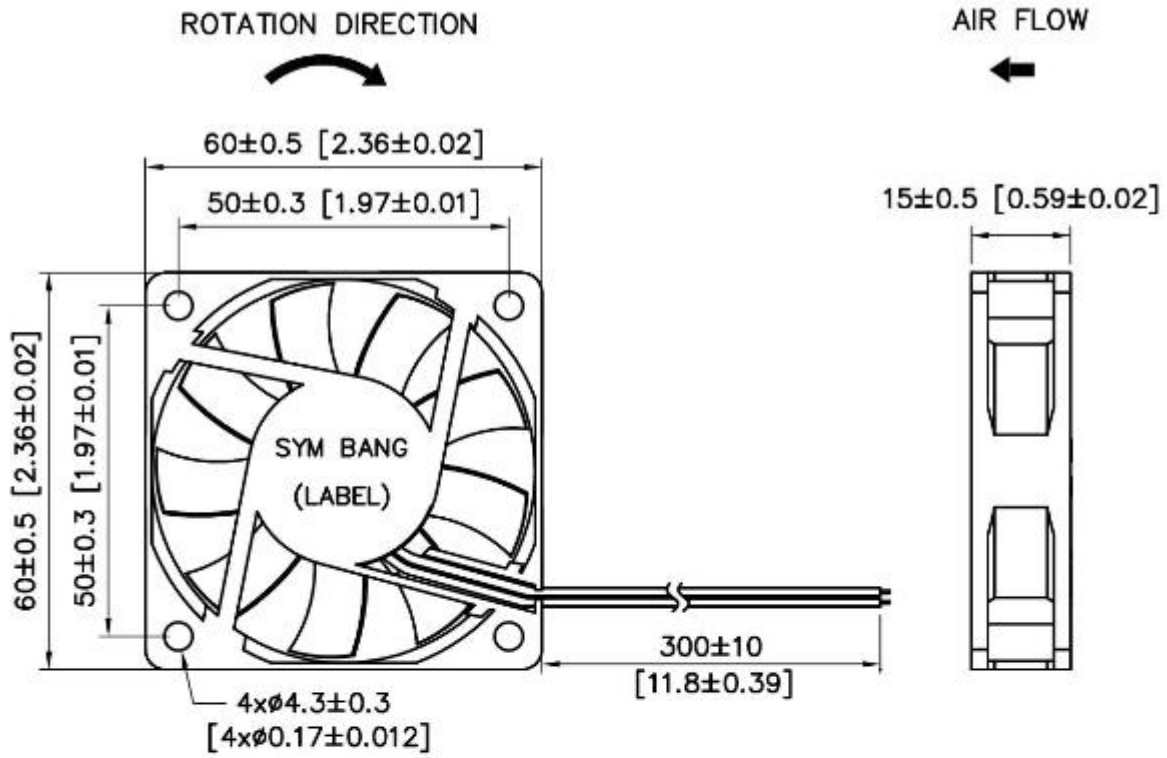
 mm

## SPECIFICATION

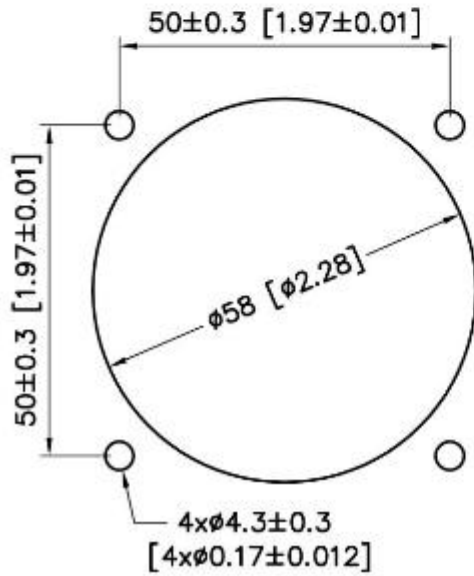
MODEL NO.	RATED VOLTAGE(V)	RATED CURRENT(A)	INPUT POWER(W)	SPEED (RPM)	MAX. AIR PRESSURE		MAX. AIR FLOW		NOISE dB(A) @1M
					inchH2O	mmH2O	CFM	m3/min	
D6015V12SL-K	12	0.26	3.12	5000	0.23	5.7	26.5	0.75	37
D6015V12H-K	12	0.18	2.16	4500	0.18	4.6	23.1	0.65	35
D6015V12M-K	12	0.14	1.68	4000	0.16	4.1	21.7	0.62	32
D6015V12L-K	12	0.12	1.44	3500	0.14	3.5	19	0.54	29
D6015V12XL-K	12	0.1	1.2	3000	0.09	2.3	15	0.46	24
D6015V24SL-K	24	0.11	2.64	5000	0.23	5.7	26.5	0.75	37
D6015V24H-K	24	0.1	2.4	4500	0.18	4.6	23.1	0.65	35
D6015V24M-K	24	0.08	1.92	4000	0.16	4.1	21.7	0.62	32
D6015V24L-K	24	0.06	1.44	3500	0.14	3.5	19	0.54	29
D6015V24XL-K	24	0.04	0.96	3000	0.09	2.3	15	0.43	24

SYMBANG

DIMENSION



Mounting panel Cutout  
Outlet Side & Inlet Side



UNIT: mm[inch]

# AIR PERFORMANCE

