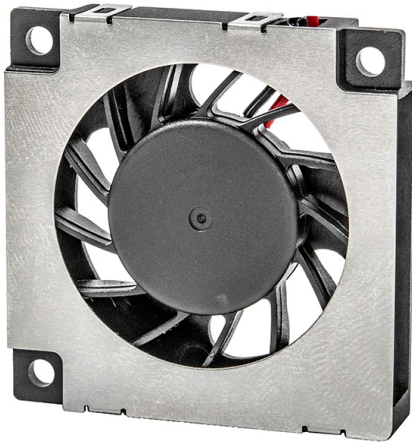


DB 3507-TK

CE
35x35x7mm(1.38"x1.38"x0.30")



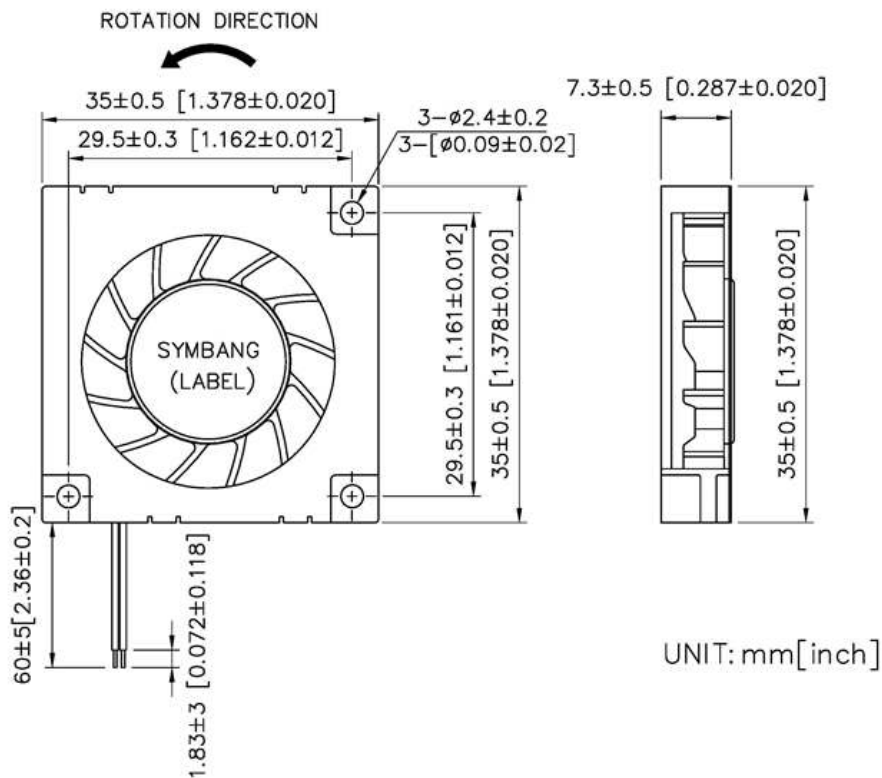
HOUSING	Fiber Glass UL94V-0
	Cover is stainless steel
IMPELLER	Fiber Glass UL94V-0
BEARING	Sleeve
OPERATING TEMPERATURE	-10°C to + 60°C
DIELECTRIC STRENGTH	5mA Max. at 500 VAC for 1 second
INSULATION RESISTANCE	10M Ω min. @500 VDC
WEIGHT	8.5g
ROHS COMPLIANCE	Yes
IP LEVEL	IP21 (Special IP Rating On Request)

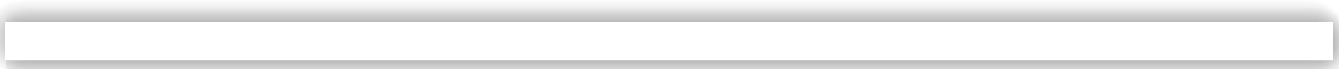
35 mm

SPECIFICATION

MODEL NO.	RATED VOLTAGE(V)	RATED CURRENT(A)	INPUT POWER(W)	SPEED (RPM)	MAX. AIR PRESSURE		MAX. AIR FLOW		NOISE dB(A) @1M
					inchH2O	mmH2O	CFM	m3/min	
DB3507V12M-TK	12	0.050	0.60	6000	0.233	5.92	1.11	0.031	27.5
DB3507V12L-TK	12	0.033	0.40	5000	0.161	4.08	0.84	0.024	23.9
DB3507V12H-TK	12	0.075	0.90	7500	0.387	9.84	1.39	0.039	32.3
DB3507V5L-TK	5	0.080	0.40	5000	0.161	4.08	0.84	0.024	23.9
DB3507V5M-TK	5	0.120	0.60	6000	0.233	5.92	1.11	0.031	27.5
DB3507V5H-TK	5	0.180	0.90	7500	0.387	9.84	1.39	0.039	32.3

DIMENSION





AIR PERFORMANCE

