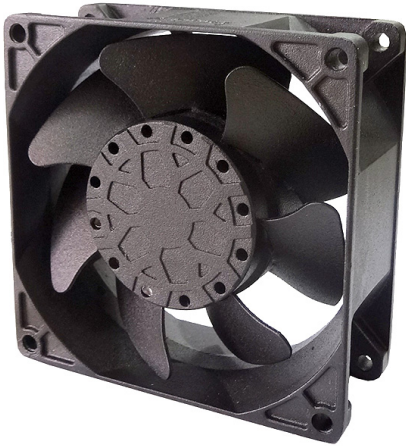


# A

# 9238M-B

92x92x38mm(3.6"x3.6"x1.5")



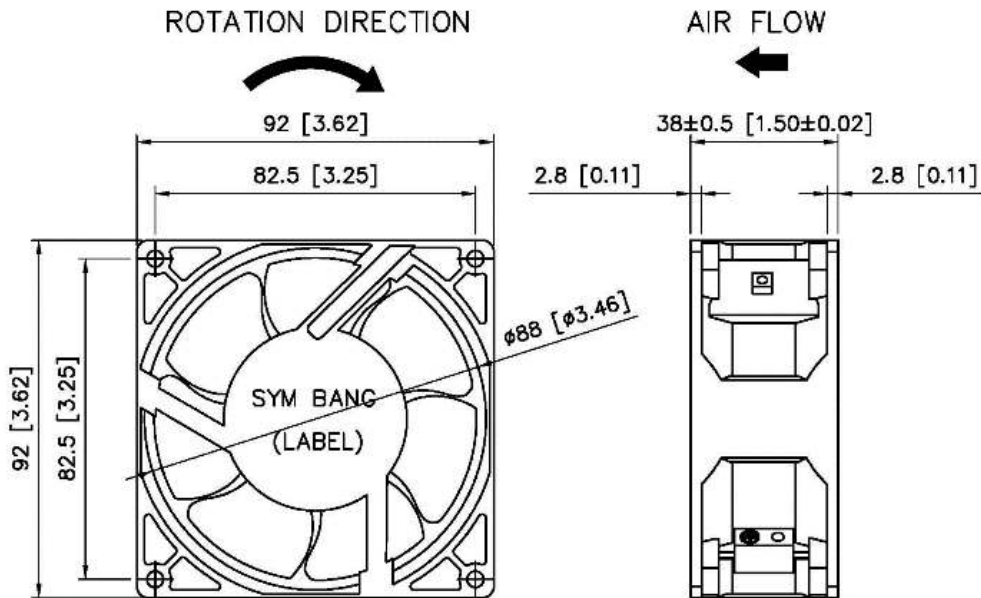
HOUSING	Aluminum Die Casting, Painted Black
IMPELLER	Iron Leaf
BEARING	Ball or Sleeve
OPERATING TEMPERATURE	-10°C to + 105°C
INSULATION	Class A
OPERATING VOLTAGE RANGE	85 VAC to 125 VAC for 115V Type 185 VAC to 240 VAC for 220V Type
DIELECTRIC STRENGTH	5mA Max. at 1500 VAC for 1 second
INSULATION RESISTANCE	10M $\Omega$ min. @500 VDC
MOTOR TYPE	Outer Rotor, Shaded Pole Motor
SAFETY	Impedance Protected
TERMINATION	Terminals or Lead Wire
WEIGHT	480 g
ROHS COMPLIANCE	Yes
IP LEVEL	IP21 (Special IP Rating On Request)

# 92mm

## SPECIFICATION

MODEL NO.	RATED VOLTAGE(V)	RATED CURRENT(A)	INPUT POWER(W)	SPEED (RPM)	MAX. AIR PRESSURE		MAX. AIR FLOW		NOISE dB(A) @1M
					inchH2O	mmH2O	CFM	m3/min	
A9238V1HM-B	110	0.24	16	2600/3000	0.29/0.23	7.4/5.9	46/54	1.30/1.52	38/43
A9238V1MM-B	110	0.22	14	2300/2700	0.16/0.20	4.0/5.0	25/29	1.18/1.42	35/40
A9238V2HM-B	220	0.12	16	2600/3000	0.29/0.23	7.4/5.9	46/54	1.30/1.52	38/43
A9238V2MM-B	220	0.1	14	2300/2700	0.16/0.20	4.0/5.0	25/29	1.18/1.42	35/40

## DIMENSION



UNIT: mm[inch]

SYMBANC

## AIR PERFORMANCE

