

A B C D E

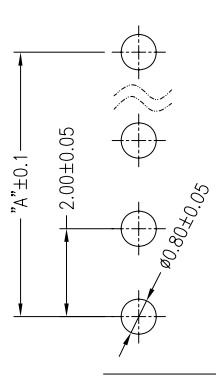
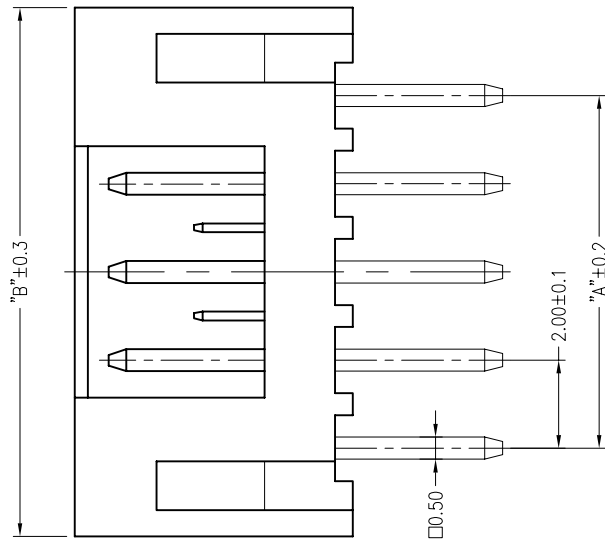
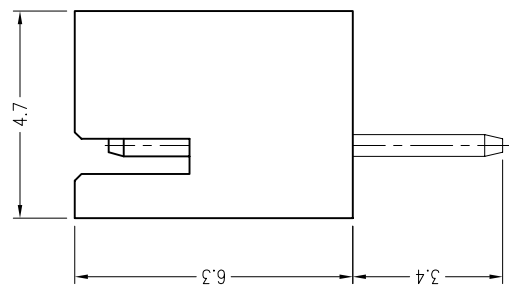
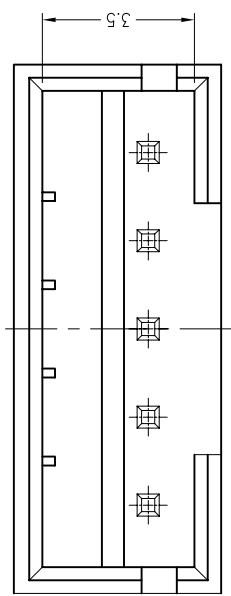
Poles	DIM.A	DIM.B
2P	2.0	6.1
3P	4.0	8.1
4P	6.0	10.1
5P	8.0	12.1
6P	10.0	14.1
7P	12.0	16.1
8P	14.0	18.1
9P	16.0	20.1
10P	18.0	22.1
11P	20.0	24.1
12P	22.0	26.1
13P	24.0	28.1
14P	26.0	30.1
15P	28.0	32.1
16P	30.0	34.1

■ 技术参数 SPECIFICATIONS


- ◆ 适用线规: AWG#30~#24
- ◆ Applicable Wire: AWG#30~#24
- ◆ 额定电压: 100V DC,AC(rms)
- ◆ Rated voltage: 100V DC,AC(rms)
- ◆ 额定电流: 2A (AWG #24)
- ◆ Rated Current: 2A (AWG #24)
- ◆ 耐压值: 800V AC/minute
- ◆ Withstand voltage: 800V AC/min.
- ◆ 工作温度: -25°C ~ +85°C
- ◆ Working Temp : -25°C ~ +85°C
- ◆ 绝缘电阻: ≥1000 MΩ
- ◆ Insulation resistance: ≥1000 MΩ
- ◆ 接触电阻: ≤10 mΩ
- ◆ Contact resistance: ≤10 mΩ

■ 材料 MATERIAL

- ◆ 绝缘体: 尼龙66, UL94-V2
- ◆ Insulator: Nylon66, UL94-V2
- ◆ 接触针: 黄铜
- ◆ Contact PIN: Brass



P.C.B LAYOUT

 Dongguan Jinda Electronics Co., Ltd. 东莞市津达电子有限公司	GENERAL TOLERANCE		SCALE: 6:1	DRAWN: 柴艳妮	DATE: 2015.01.21	DOC. NO: JD-Y-E120	TITLE: 工程图	REV. A
	XX. ±0.40		UNIT: mm	CHECK: 于腾	DATE: 2015.01.21	PARTS NO: PH-NA		SHEET: 1/1
	X. ±0.30		SIZE: A4	APPROVE: 肖志军				
	.X. ±0.25							
.XX ±0.15								

A B C D E

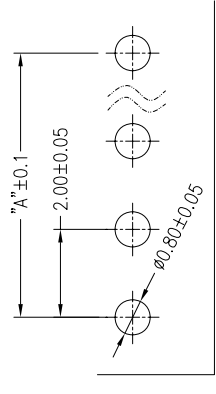
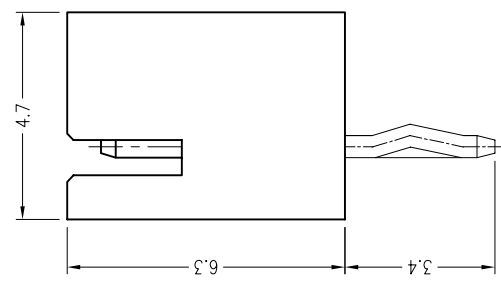
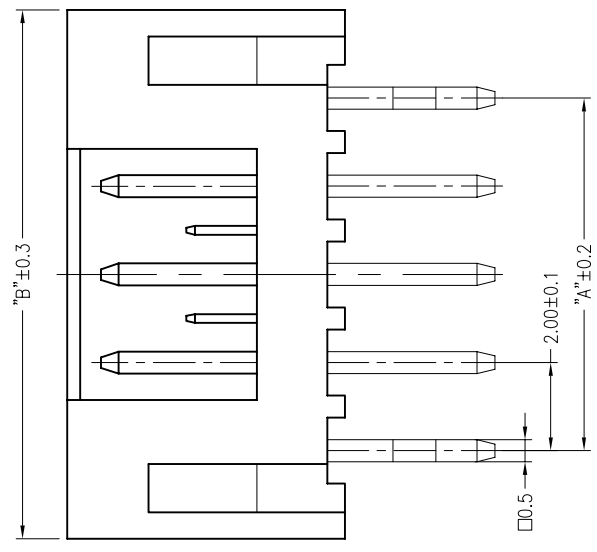
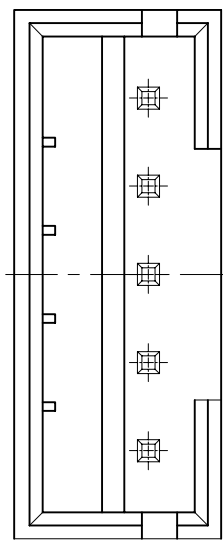
Poles	DIM.A	DIM.B
2P	2.0	6.1
3P	4.0	8.1
4P	6.0	10.1
5P	8.0	12.1
6P	10.0	14.1
7P	12.0	16.1
8P	14.0	18.1
9P	16.0	20.1
10P	18.0	22.1
11P	20.0	24.1
12P	22.0	26.1
13P	24.0	28.1
14P	26.0	30.1
15P	28.0	32.1
16P	30.0	34.1

■ 技术参数 SPECIFICATIONS

- ◆ 适用线规: AWG#30~#24
- ◆ Applicable Wire: AWG#30~#24
- ◆ 额定电压: 100V DC,AC(rms)
- ◆ Rated voltage: 100V DC,AC(rms)
- ◆ 额定电流: 2A (AWG #24)
- ◆ Rated Current: 2A (AWG #24)
- ◆ 耐压值: 800V AC/minute
- ◆ Withstand voltage: 800V AC/min.
- ◆ 工作温度: -25°C ~ +85°C
- ◆ Working Temp : -25°C ~ +85°C
- ◆ 绝缘电阻: ≥1000 MΩ
- ◆ Insulation resistance: ≥1000 MΩ
- ◆ 接触电阻: ≤10 mΩ
- ◆ Contact resistance: ≤10 mΩ

■ 材料 MATERIAL

- ◆ 绝缘体: 尼龙66, UL94-V2
- ◆ Insulator: Nylon66, UL94-V2
- ◆ 接触针: 黄铜
- ◆ Contact PIN: Brass



P.C.B LAYOUT

 <p>JINDA[®] DongGuan JinDa Electronics Co., Ltd. 东莞市津达电子有限公司</p>	GENERAL TOLERANCE		SCALE: 6.5:1	DRAWN: 柴艳妮	DATE: 2015.4.8	DOC. NO: JD-Y-E229	TITLE: 工程图	REV. A
	XX. ±0.40		UNIT: mm	CHECK: 于腾	DATE: 2015.4.8	PARTS NO: PH-NA(打)		SHEET: 1/1
	X. ±0.30		SIZE: A4	APPROVE: 肖志军				
	.X ±0.25							
.XX ±0.15								

A B C D E

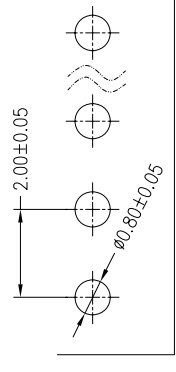
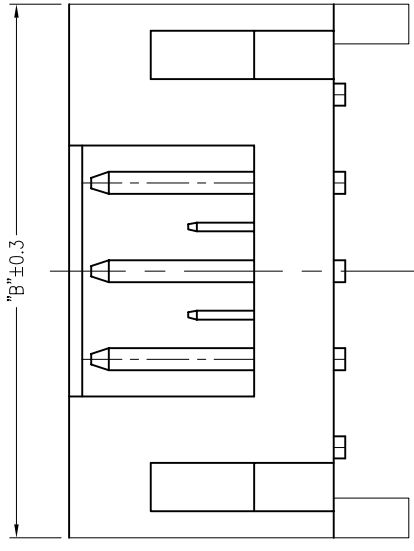
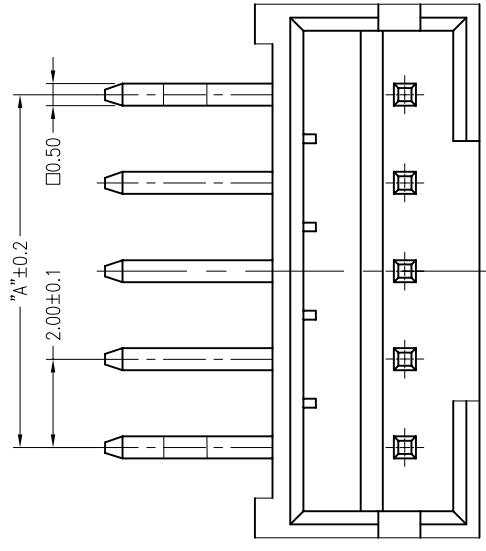
Poles	DIM.A	DIM.B
2P	2.0	6.1
3P	4.0	8.1
4P	6.0	10.1
5P	8.0	12.1
6P	10.0	14.1
7P	12.0	16.1
8P	14.0	18.1
9P	16.0	20.1
10P	18.0	22.1
11P	20.0	24.1
12P	22.0	26.1
13P	24.0	28.1
14P	26.0	30.1
15P	28.0	32.1
16P	30.0	34.1

■ 技术参数 SPECIFICATIONS


- ◆ 适用线规: AWG#30~#24
- ◆ Applicable Wire: AWG#30~#24
- ◆ 额定电压: 100V DC,AC(rms)
- ◆ Rated voltage: 100V DC,AC(rms)
- ◆ 额定电流: 2A (AWG #24)
- ◆ Rated Current: 2A (AWG #24)
- ◆ 耐压值: 800V AC/minute
- ◆ Withstand voltage: 800V AC/min.
- ◆ 工作温度: -25°C ~ +85°C
- ◆ Working Temp : -25°C ~ +85°C
- ◆ 绝缘电阻: ≥1000 MΩ
- ◆ Insulation resistance: ≥1000 MΩ
- ◆ 接触电阻: ≤10 mΩ
- ◆ Contact resistance: ≤10 mΩ

■ 材料 MATERIAL

- ◆ 绝缘体: 尼龙66, UL94-V2
- ◆ Insulator: Nylon66, UL94-V2
- ◆ 接触针: 黄铜
- ◆ Contact PIN: Brass



P.C.B LAYOUT

 <p>JINDA[®] DongGuang JinDa Electronics Co., Ltd. 东莞市津达电子有限公司</p>	GENERAL TOLERANCE		SCALE: 6.5:1	DRAWN: 柴艳妮	DATE: 2014.1.7	DOC. NO: JD-Y-E232	TITLE: 工程图	REV. A
	XX. ±0.40		UNIT: mm	CHECK: 于腾	DATE: 2014.1.7	PARTS NO: PH-NAWD(打K)		SHEET: 1/1
	X. ±0.30		SIZE: A4	APPROVE: 肖志军				
	.X. ±0.25							
.XX ±0.15								

A B C D E

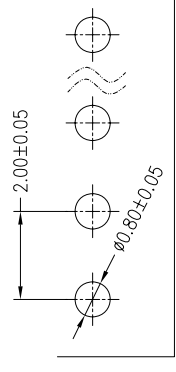
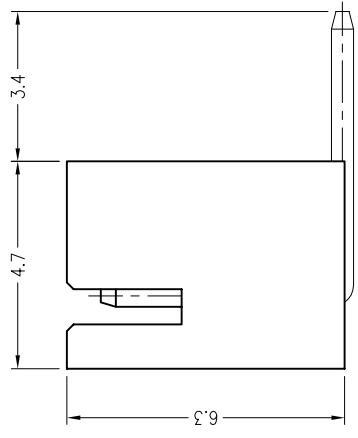
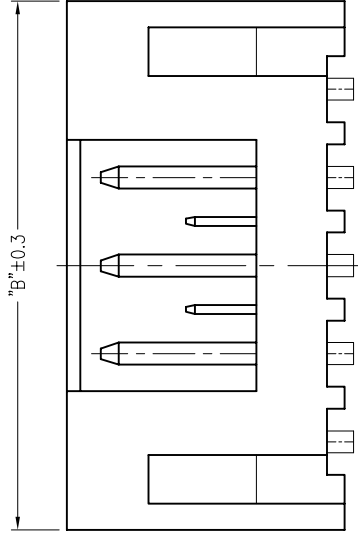
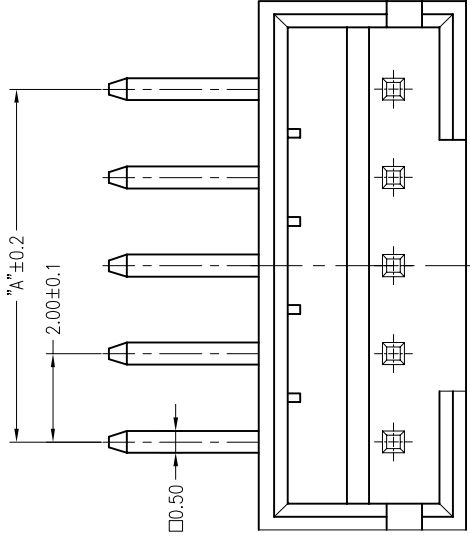
Poles	DIM.A	DIM.B
2P	2.0	6.1
3P	4.0	8.1
4P	6.0	10.1
5P	8.0	12.1
6P	10.0	14.1
7P	12.0	16.1
8P	14.0	18.1
9P	16.0	20.1
10P	18.0	22.1
11P	20.0	24.1
12P	22.0	26.1
13P	24.0	28.1
14P	26.0	30.1
15P	28.0	32.1
16P	30.0	34.1

■ 技术参数 SPECIFICATIONS


- ◆ 适用线规: AWG#30~#24
- ◆ Applicable Wire: AWG#30~#24
- ◆ 额定电压: 100V DC,AC(rms)
- ◆ Rated voltage: 100V DC,AC(rms)
- ◆ 额定电流: 2A (AWG #24)
- ◆ Rated Current: 2A (AWG #24)
- ◆ 耐压值: 800V AC/minute
- ◆ Withstand voltage: 800V AC/min.
- ◆ 工作温度: -25°C ~ +85°C
- ◆ Working Temp : -25°C ~ +85°C
- ◆ 绝缘电阻: ≥1000 MΩ
- ◆ Insulation resistance: ≥1000 MΩ
- ◆ 接触电阻: ≤10 mΩ
- ◆ Contact resistance: ≤10 mΩ

■ 材料 MATERIAL

- ◆ 绝缘体: 尼龙66, UL94-V2
- ◆ Insulator: Nylon66, UL94-V2
- ◆ 接触针: 黄铜
- ◆ Contact PIN: Brass



P.C.B LAYOUT

 <p>JINDA[®] Dongguan JinDa Electronics Co., Ltd. 东莞市津达电子有限公司</p>	GENERAL TOLERANCE		SCALE: 6.5:1	DRAWN: 柴艳妮	DATE: 2014.3.27	DOC. NO: JD-Y-E121	TITLE: 工程图	REV. A
	XX. ±0.40		UNIT: mm	CHECK: 于腾	DATE: 2014.3.27	PARTS NO: PH-NAW		SHEET: 1/1
	X. ±0.30		SIZE: A4	APPROVE: 肖志军	DATE: 2014.3.27			
	.X ±0.25							
.XX ±0.15								

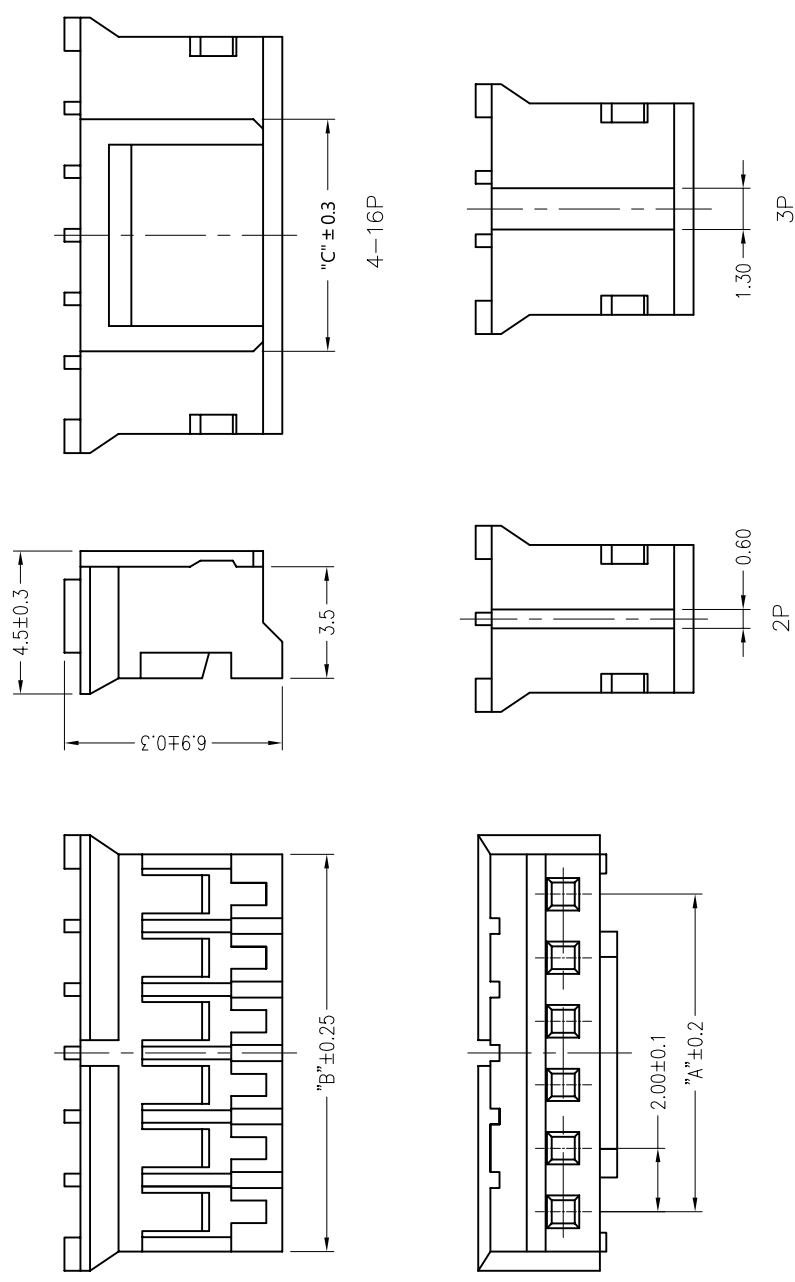
	A	2P	3P	4P	5P	6P	7P	8P	9P	10P	11P	12P	13P	14P	15P	16P
Poles		2P	3P	4P	5P	6P	7P	8P	9P	10P	11P	12P	13P	14P	15P	16P
DIM.A		2.0	4.0	6.0	8.0	10.0	12.0	14.0	16.0	18.0	20.0	22.0	24.0	26.0	28.0	30.0
DIM.B		4.6	6.6	8.6	10.6	12.6	14.6	16.6	18.6	20.6	22.6	24.6	26.6	28.6	30.6	32.6
DIM.C		0.6	1.3	3.3	5.3	7.3	9.3	11.3	13.3	15.3	17.3	19.3	21.3	23.3	25.3	27.3


■ 技术参数 SPECIFICATIONS

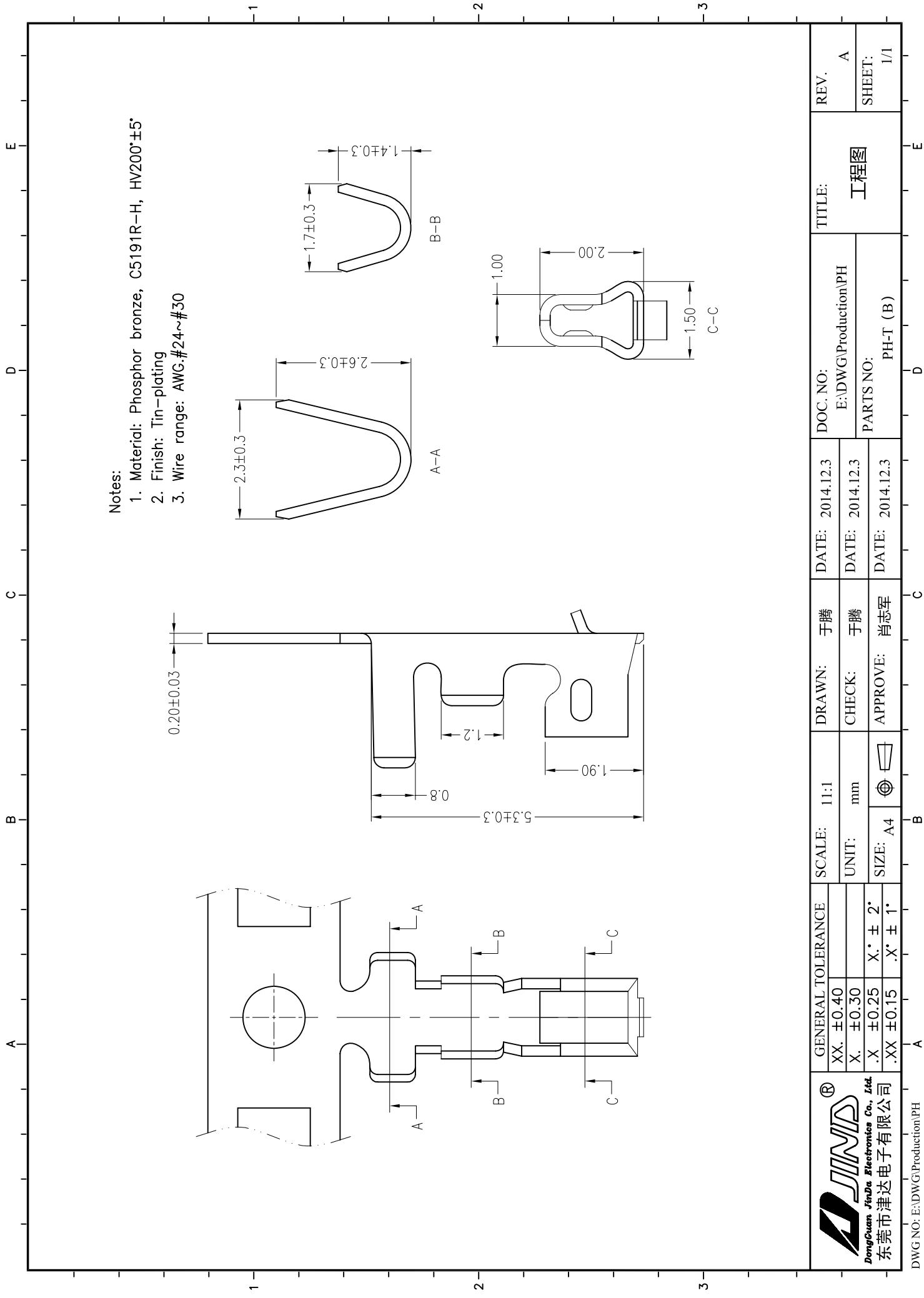
- ◆ 适用线规: AWG#30~#24
- ◆ Applicable Wire: AWG#30~#24
- ◆ 额定电压: 100V DC,AC(rms)
- ◆ Rated voltage: 100V DC,AC(rms)
- ◆ 额定电流: 2A (AWG #24)
- ◆ Rated Current: 2A (AWG #24)
- ◆ 耐压值: 800V AC/minute
- ◆ Withstand voltage: 800V AC/min.
- ◆ 工作温度: -25°C ~ +85°C
- ◆ Working Temp : -25°C ~ +85°C
- ◆ 绝缘电阻: ≥1000 MΩ
- ◆ Insulation resistance: ≥1000 MΩ
- ◆ 接触电阻: ≤10 mΩ
- ◆ Contact resistance: ≤10 mΩ

■ 材料 MATERIAL

- ◆ 绝缘体: 尼龙66, UL94-V2
- ◆ Insulator: Nylon66, UL94-V2



 <p>JINDA[®] DongGuan JinDa Electronics Co., Ltd. 东莞市津达电子有限公司</p>	GENERAL TOLERANCE		SCALE: 4.5:1	DRAWN:	DATE:	DOC. NO:	TITLE:	REV.
	XX. ±0.40	X. ±0.30	UNIT: mm	CHECK:	DATE:	JD-Y-E122	工程图	A
.X ±0.25	.XX ±0.15	SIZE: A4	APPROVE:	DATE:	PARTS NO:	PH-NY		SHEET: 1/1



- Notes:
1. Material: Phosphor bronze, C5191R-H, HV200±5
 2. Finish: Tin-plating
 3. Wire range: AWG.#24~#30

 JINDA [®] Dongguan Jinda Electronics Co., Ltd. 东莞市津达电子有限公司	GENERAL TOLERANCE		SCALE: 1:1	DRAWN: 于腾	DATE: 2014.12.3	DOC. NO:	TITLE:		REV.
	XX. ±0.40		UNIT: mm	CHECK: 于腾	DATE: 2014.12.3	E:\DWG\Production\PH	工程图		A
	X. ±0.30		SIZE: A4	APPROVE: 肖志军	DATE: 2014.12.3	PH-T (B)			SHEET:
	.X. ±0.25								1/1
.XX ±0.15									

A B C D E

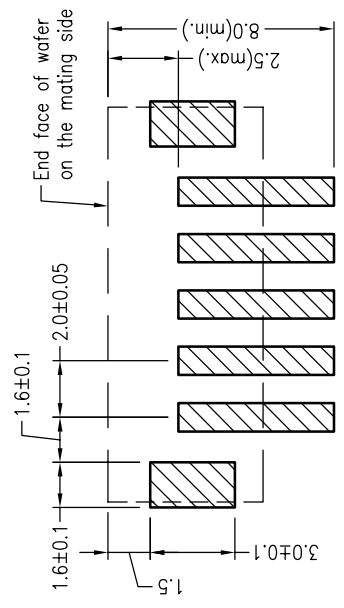
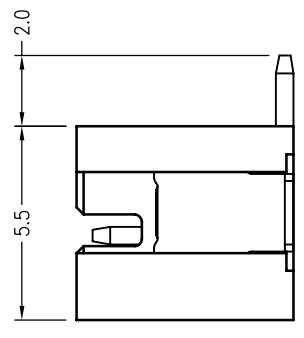
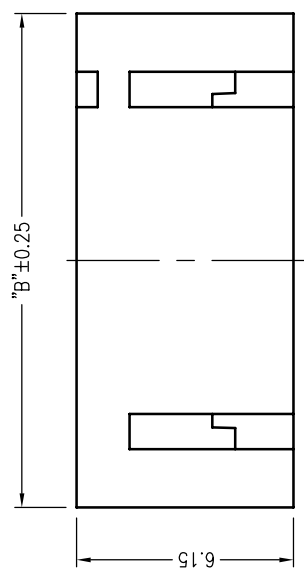
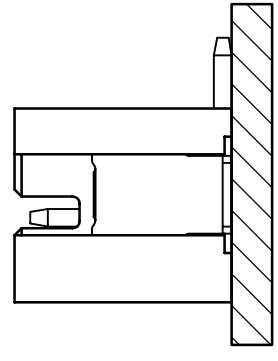
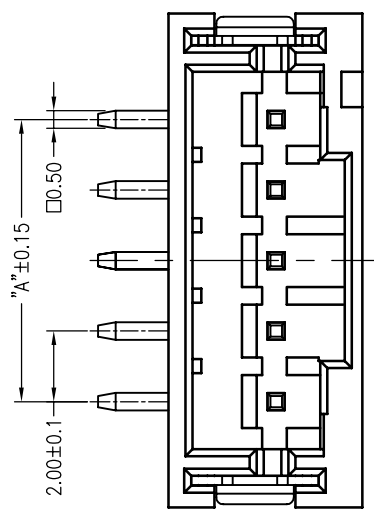
Poles	DIM.A	DIM.B
2P	2.0	8.0
3P	4.0	10.0
4P	6.0	12.0
5P	8.0	14.0
6P	10.0	16.0
7P	12.0	18.0
8P	14.0	20.0
9P	16.0	22.0
10P	18.0	24.0
11P	20.0	26.0
12P	22.0	28.0
13P	24.0	30.0
14P	26.0	32.0
15P	28.0	34.0
16P	30.0	36.0

■ 技术参数 SPECIFICATIONS

- ◆ 适用线规: AWG#24~#30
Applicable Wire: AWG#24~#30
- ◆ 额定电压: 100V DC/AC(rms)
Rated voltage: 100V DC/AC(rms)
- ◆ 额定电流: 2A (AWG #24)
Rated Current: 2A (AWG #24)
- ◆ 耐压值: 800V AC/minute
Withstand voltage: 800V AC/min.
- ◆ 工作温度: -25°C ~ +85°C
Working Temp : -25°C ~ +85°C
- ◆ 绝缘电阻: ≥1000 MΩ
Insulation resistance: ≥1000 MΩ
- ◆ 接触电阻: ≤10 mΩ
Contact resistance: ≤10 mΩ

■ 材料 MATERIAL

- ◆ 绝缘体: 尼龙9T, UL94-V0
Insulator: Nylon9T, UL94-V0
- ◆ 接触针: 黄铜
Contact PIN: Brass
- ◆ 焊片: 磷铜
Solder tab: Phosphor bronze



1.0(min.)
P.C.B LAYOUT



GENERAL TOLERANCE	
XX. ±0.40	
X. ±0.30	
.X ±0.25	
.XX ±0.15	

SCALE: 5:1	DRAWN: 柴艳妮	DATE: 2015.4.16
UNIT: mm	CHECK: 于腾	DATE: 2015.4.16
SIZE: A4	APPROVE: 肖志军	DATE: 2015.4.16

DOC. NO: JD-Y-E124	TITLE: 工程图
PARTS NO: PH-LT-NA	

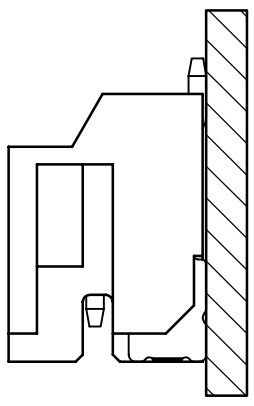
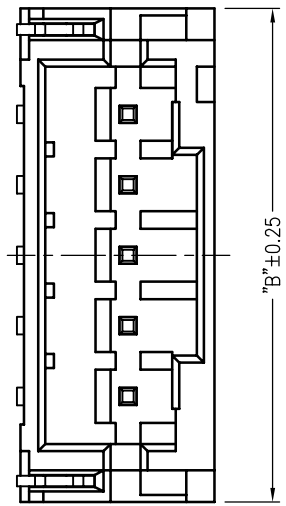
REV. A	
SHEET: 1/1	

1 2 3

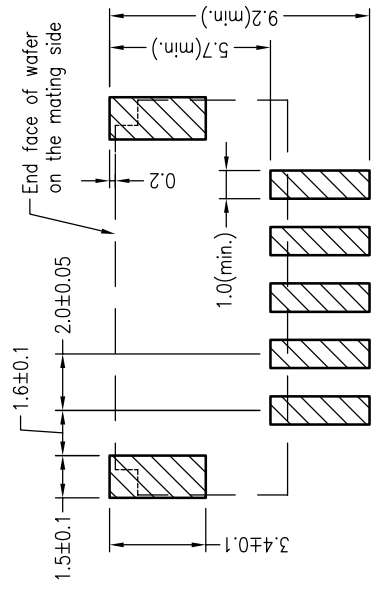
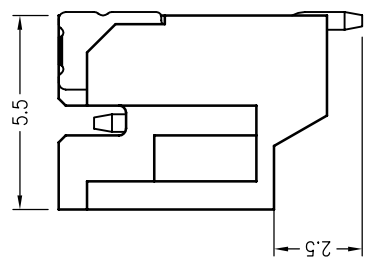
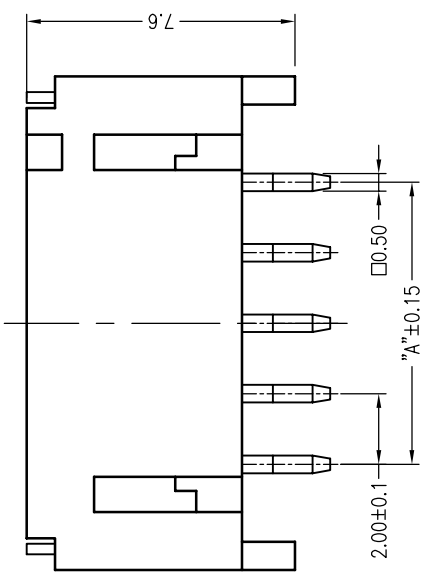
A B C D E

Poles	DIM:A	DIM:B
2P	2.0	8.0
3P	4.0	10.0
4P	6.0	12.0
5P	8.0	14.0
6P	10.0	16.0
7P	12.0	18.0
8P	14.0	20.0
9P	16.0	22.0
10P	18.0	24.0
11P	20.0	26.0
12P	22.0	28.0
13P	24.0	30.0
14P	26.0	32.0
15P	28.0	34.0
16P	30.0	36.0

- 技术参数 SPECIFICATIONS
- ◆ 适用线规: AWG#24~#30
 - ◆ Applicable Wire: AWG#24~#30
 - ◆ 额定电压: 100V DC/AC(rms)
 - ◆ Rated voltage: 100V DC/AC(rms)
 - ◆ 额定电流: 2A (AWG #24)
 - ◆ Rated Current: 2A (AWG #24)
 - ◆ 耐压值: 800V AC/minute
 - ◆ Withstand voltage: 800V AC/min.
 - ◆ 工作温度: -25℃ ~ +85℃
 - ◆ Working Temp: -25℃ ~ +85℃
 - ◆ 绝缘电阻: ≥1000 MΩ
 - ◆ Insulation resistance: ≥1000 MΩ
 - ◆ 接触电阻: ≤10 mΩ
 - ◆ Contact resistance: ≤10 mΩ
- 材料 MATERIAL
- ◆ 绝缘体: 尼龙9T, UL94-V0
 - ◆ Insulator: Nylon9T, UL94-V0
 - ◆ 接触针: 黄铜
 - ◆ Contact PIN: Brass
 - ◆ 焊片: 磷铜
 - ◆ Solder tab: Phosphor bronze



Assembly layout



End face of wafer on the mating side

P.C.B LAYOUT

 DongGuan JinDa Electronics Co., Ltd. 东莞市津达电子有限公司	GENERAL TOLERANCE		SCALE: 5:1	DRAWN: 柴艳妮	DATE: 2015.4.16	DOC. NO: JD-Y-E125	TITLE: 工程图	REV. B
	XX. ±0.40		UNIT: mm	CHECK: 于腾	DATE: 2015.4.16	PARTS NO: PH-WT-NA		SHEET: 1/1
	X. ±0.30		SIZE: A4	APPROVE: 肖志军	DATE: 2015.4.16			
	.X. ±0.25	X.* ± 2*						
.XX ±0.15	.X.* ± 1*							

1 2 3