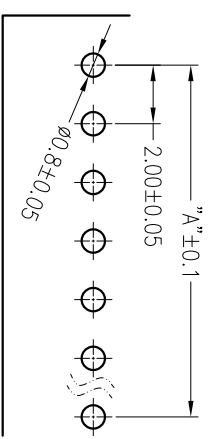
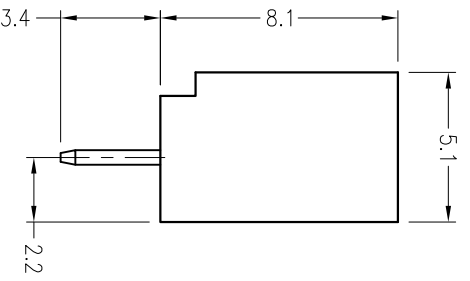
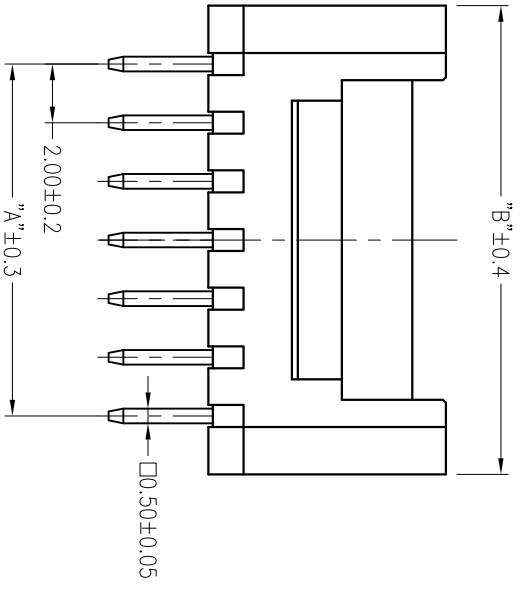
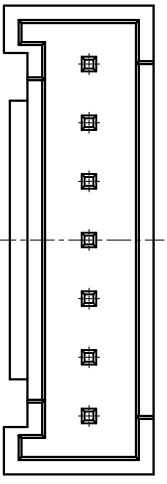


Poles	DIM.A	DIM.B
2P	2.0	6.0
3P	4.0	8.0
4P	6.0	10.0
5P	8.0	12.0
6P	10.0	14.0
7P	12.0	16.0
8P	14.0	18.0
9P	16.0	20.0
10P	18.0	22.0
11P	20.0	24.0
12P	22.0	26.0
13P	24.0	28.0
14P	26.0	30.0
15P	28.0	32.0
16P	30.0	34.0



■ 技术参数 SPECIFICATIONS

- ◆ 适用线规: AWG#30~#22
Applicable Wire: AWG#30~#22
- ◆ 额定电压: 125V DC,AC(rms)
Rated voltage: 125V DC,AC(rms)
- ◆ 额定电流: 2A (AWG #22)
Rated Current: 2A (AWG #22)
- ◆ 耐压值: 1000V AC/minute
Withstand voltage: 1000V AC/minute
- ◆ 工作温度: $-25^{\circ}\text{C} \sim +85^{\circ}\text{C}$
Working Temp : $-25^{\circ}\text{C} \sim +85^{\circ}\text{C}$
- ◆ 绝缘电阻: $\geq 1000 \text{ M}\Omega$
Insulation resistance: $\geq 1000 \text{ M}\Omega$
- ◆ 接触电阻: $\leq 20 \text{ m}\Omega$
Contact resistance: $\leq 20 \text{ m}\Omega$

■ 材料 MATERIAL

- ◆ 胶壳: 尼龙66, UL94-V2
Housing: Nylon66, UL94-V2
- ◆ 接触针: 黄铜
Contact PIN: Brass

P.C.B. Layout



JIMD
Dongguan JinDa Electronics Co., Ltd
东莞市津达电子有限公司

GENERAL TOLERANCE	
XX: ± 0.40	
X: ± 0.30	
.X: ± 0.25	X.* $\pm 2^{\circ}$
.XX: ± 0.15	.X.* $\pm 1^{\circ}$

SCALE:	4:1
UNIT:	mm
SIZE:	A4

DRAWN:	柴艳妮
CHECK:	于 腾
APPROVE:	肖志军

DATE:	2014.12.10
DATE:	2014.12.10
DATE:	2014.12.10

DOC. NO:	E:\DWG\Production\PHS
PARTS NO:	PHS-NA

TITLE:	工程图
REV.:	A
SHEET:	1/1