

### General Description

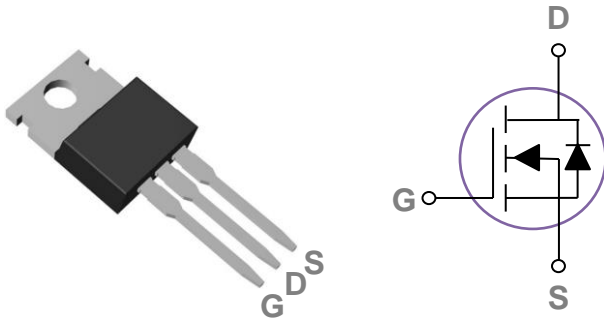
These N-Channel enhancement mode power field effect transistors are planar stripe, DMOS technology. This advanced technology has been especially tailored to minimize on-state resistance, provide superior switching performance, and withstand high energy pulse in the avalanche and commutation mode. These devices are well suited for high efficiency switch mode power supply.

BVDSS	RDSON	ID
650V	0.7Ω	10A

### Features

- Improved dv/dt capability
- Fast switching
- 100% EAS Guaranteed
- Green Device Available

### TO220 Pin Configuration



### Applications

- High efficient switched mode power supplies
- TV Power
- Adapter/charger
- Server Power
- PV Inverter / UPS

### Absolute Maximum Ratings $T_c=25^\circ\text{C}$ unless otherwise noted

Symbol	Parameter	Rating	Units
$V_{DS}$	Drain-Source Voltage	650	V
$V_{GS}$	Gate-Source Voltage	$\pm 30$	V
$I_D$	Drain Current – Continuous ( $T_c=25^\circ\text{C}$ )	10	A
	Drain Current – Continuous ( $T_c=100^\circ\text{C}$ )	6.3	A
$I_{DM}$	Drain Current – Pulsed <sup>1</sup>	40	A
EAS	Single Pulse Avalanche Energy <sup>2</sup>	500	mJ
IAS	Single Pulse Avalanche Current <sup>2</sup>	10	A
$P_D$	Power Dissipation ( $T_c=25^\circ\text{C}$ )	125	W
	Power Dissipation – Derate above $25^\circ\text{C}$	1	W/ $^\circ\text{C}$
$T_{STG}$	Storage Temperature Range	-55 to 150	$^\circ\text{C}$
$T_J$	Operating Junction Temperature Range	-55 to 150	$^\circ\text{C}$

### Thermal Characteristics

Symbol	Parameter	Typ.	Max.	Unit
$R_{\theta JA}$	Thermal Resistance Junction to ambient	---	62	$^\circ\text{C}/\text{W}$
$R_{\theta JC}$	Thermal Resistance Junction to Case	---	1	$^\circ\text{C}/\text{W}$

**Electrical Characteristics (T<sub>J</sub>=25 °C, unless otherwise noted)**
**Off Characteristics**

Symbol	Parameter	Conditions	Min.	Typ.	Max.	Unit
BV <sub>DSS</sub>	Drain-Source Breakdown Voltage	V <sub>GS</sub> =0V, I <sub>D</sub> =250μA	650	---	---	V
I <sub>DSS</sub>	Drain-Source Leakage Current	V <sub>DS</sub> =650V, V <sub>GS</sub> =0V, T <sub>J</sub> =25°C	---	---	1	μA
		V <sub>DS</sub> =520V, V <sub>GS</sub> =0V, T <sub>J</sub> =100°C	---	---	10	μA
I <sub>GSS</sub>	Gate-Source Leakage Current	V <sub>GS</sub> =±30V, V <sub>DS</sub> =0V	---	---	±100	nA

**On Characteristics**

Symbol	Parameter	Conditions	Min.	Typ.	Max.	Unit
R <sub>DS(ON)</sub>	Static Drain-Source On-Resistance	V <sub>GS</sub> =10V, I <sub>D</sub> =5A	---	0.57	0.7	Ω
V <sub>GS(th)</sub>	Gate Threshold Voltage	V <sub>GS</sub> =V <sub>DS</sub> , I <sub>D</sub> =250μA	2	3	4	V
g <sub>fs</sub>	Forward Transconductance	V <sub>DS</sub> =30V, I <sub>D</sub> =4A	---	12	---	S

**Dynamic and switching Characteristics**

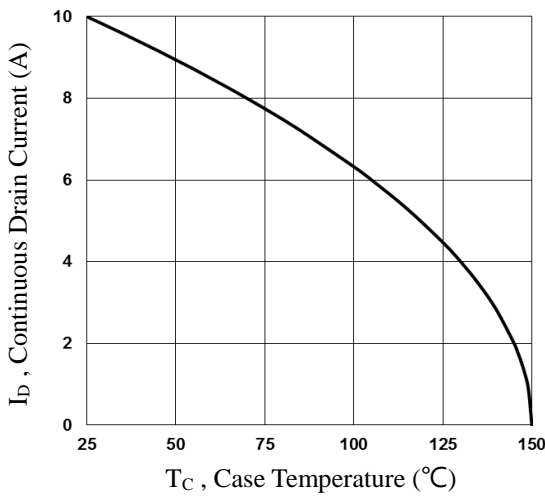
Symbol	Parameter	Conditions	Min.	Typ.	Max.	Unit
Q <sub>g</sub>	Total Gate Charge <sup>3,4</sup>	V <sub>DS</sub> =520V, V <sub>GS</sub> =10V, I <sub>D</sub> =5A	---	54	80	nC
Q <sub>gs</sub>	Gate-Source Charge <sup>3,4</sup>		---	8.6	13	
Q <sub>gd</sub>	Gate-Drain Charge <sup>3,4</sup>		---	20.5	30	
T <sub>d(on)</sub>	Turn-On Delay Time <sup>3,4</sup>	V <sub>DD</sub> =300V, V <sub>GS</sub> =10V, R <sub>G</sub> =25Ω I <sub>D</sub> =5A	---	45	90	ns
T <sub>r</sub>	Rise Time <sup>3,4</sup>		---	50	100	
T <sub>d(off)</sub>	Turn-Off Delay Time <sup>3,4</sup>		---	105	200	
T <sub>f</sub>	Fall Time <sup>3,4</sup>		---	42	80	
C <sub>iss</sub>	Input Capacitance	V <sub>DS</sub> =25V, V <sub>GS</sub> =0V, F=1MHz	---	1890	3800	pF
C <sub>oss</sub>	Output Capacitance		---	175	350	
C <sub>rss</sub>	Reverse Transfer Capacitance		---	27	54	
R <sub>g</sub>	Gate resistance	V <sub>GS</sub> =0V, V <sub>DS</sub> =0V, F=1MHz	---	1.6	3.2	Ω

**Drain-Source Diode Characteristics and Maximum Ratings**

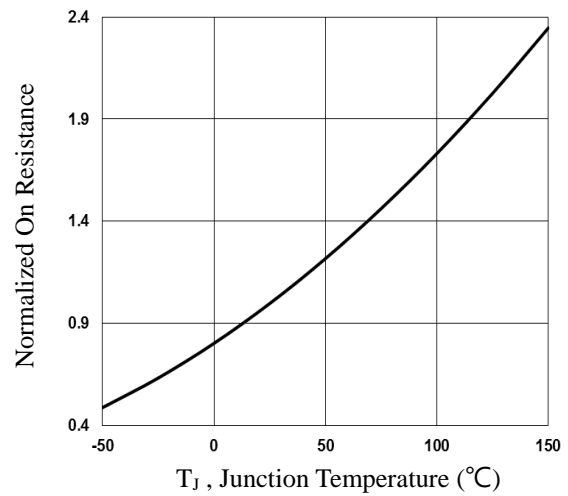
Symbol	Parameter	Conditions	Min.	Typ.	Max.	Unit
I <sub>S</sub>	Continuous Source Current	V <sub>G</sub> =V <sub>D</sub> =0V, Force Current	---	---	10	A
I <sub>SM</sub>	Pulsed Source Current		---	---	20	A
V <sub>SD</sub>	Diode Forward Voltage	V <sub>GS</sub> =0V, I <sub>S</sub> =1A, T <sub>J</sub> =25°C	---	---	1	V

Note :

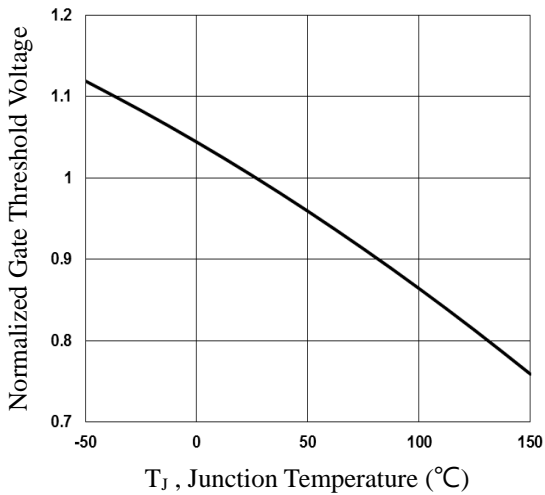
1. Repetitive Rating : Pulsed width limited by maximum junction temperature.
2. V<sub>DD</sub>=50V, V<sub>GS</sub>=10V, L=10mH, I<sub>AS</sub>=10A., R<sub>G</sub>=25Ω, Starting T<sub>J</sub>=25°C.
3. The data tested by pulsed, pulse width ≤ 300us, duty cycle ≤ 2%.
4. Essentially independent of operating temperature.



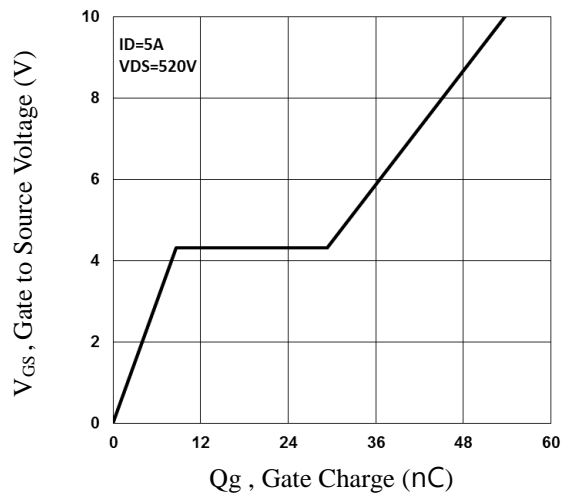
**Fig.1 Continuous Drain Current vs.  $T_c$**



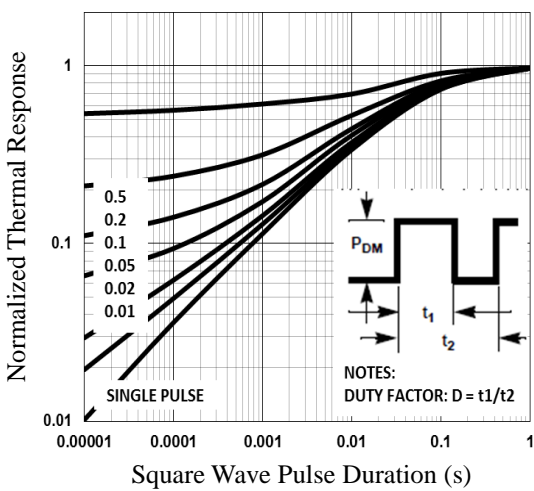
**Fig.2 Normalized  $R_{DS(on)}$  vs.  $T_j$**



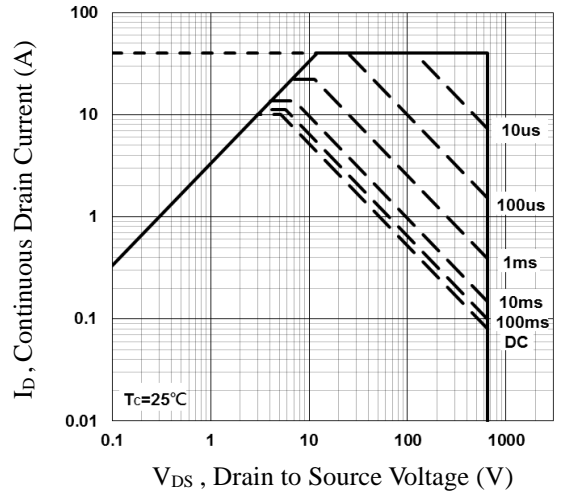
**Fig.3 Normalized  $V_{th}$  vs.  $T_j$**



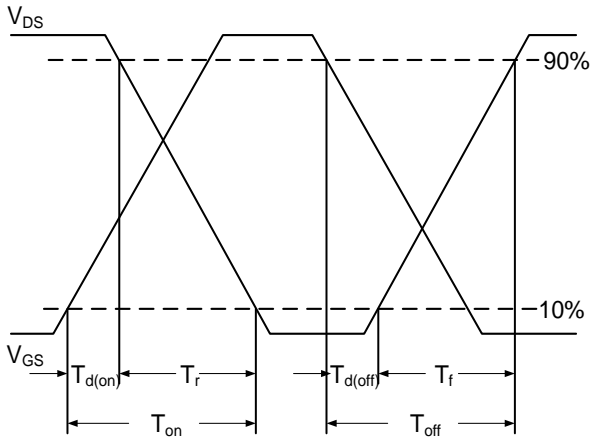
**Fig.4 Gate Charge Waveform**



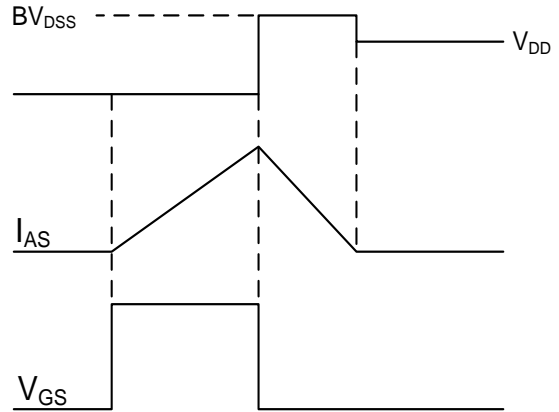
**Fig.5 Normalized Transient Impedance**



**Fig.6 Maximum Safe Operation Area**

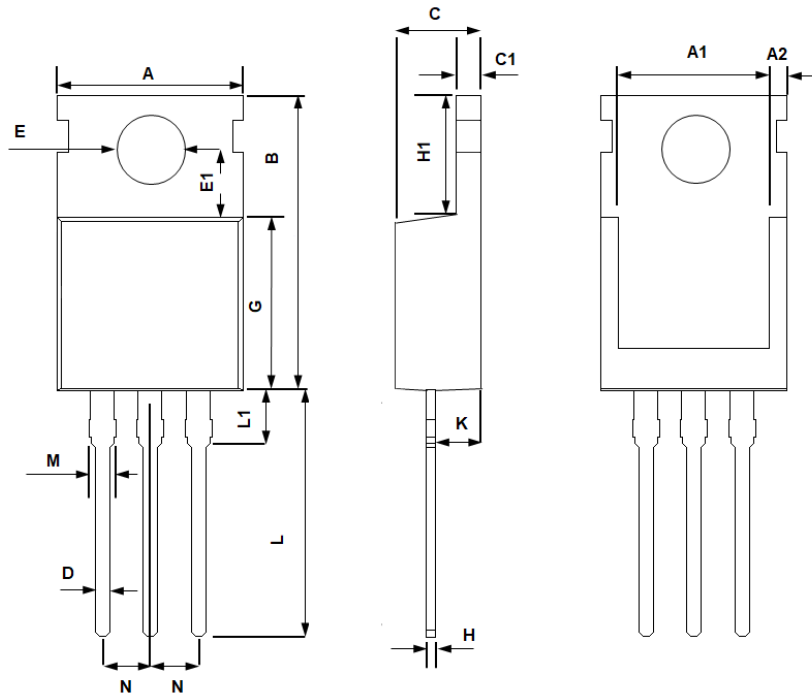


**Fig.7 Switching Time Waveform**



**Fig.8 EAS Waveform**

## TO220 PACKAGE INFORMATION



Symbol	Dimensions In Millimeters		Dimensions In Inches	
	MAX	MIN	MAX	MIN
A	10.400	9.700	0.409	0.382
A1	8.900	7.400	0.350	0.291
A2	1.400	0.800	0.055	0.031
B	16.500	14.500	0.650	0.571
C	4.750	4.200	0.187	0.165
C1	1.500	1.100	0.059	0.043
D	1.000	0.600	0.039	0.024
E	4.000	3.300	0.157	0.130
E1	3.800	3.400	0.150	0.134
G	9.400	8.400	0.370	0.331
H	0.600	0.200	0.024	0.008
H1	6.850	6.200	0.270	0.244
K	2.850	2.100	0.112	0.083
L	14.000	12.500	0.551	0.492
L1	4.000	2.700	0.157	0.106
M	1.750	1.100	0.069	0.043
N	2.640	2.440	0.104	0.096