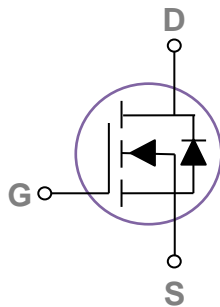
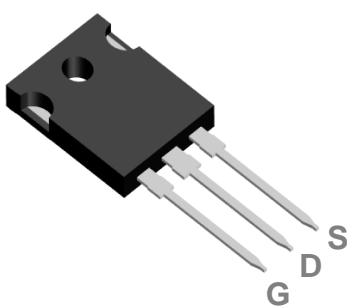


General Description

These N-Channel enhancement mode power field effect transistors are using super junction MOS technology. This advanced technology has been especially tailored to minimize on-state resistance, provide superior switching performance, and withstand high energy pulse in the avalanche and commutation mode. These devices are well suited for high efficiency fast switching applications.

TO247 Pin Configuration



BVDSS	RDSON	ID
800V	275mΩ	17A

Features

- 800V, 17A, $R_{DS(ON)} = 275m\Omega @ V_{GS} = 10V$
- Improved dv/dt capability
- Fast switching
- 100% EAS Guaranteed
- Green Device Available

Applications

- PFC Power Supply Stages
- Motor Control
- DC-DC Converters
- Adapter

Absolute Maximum Ratings $T_c=25^\circ C$ unless otherwise noted

Symbol	Parameter	Rating	Units
V_{DS}	Drain-Source Voltage	800	V
V_{GS}	Gate-Source Voltage	± 30	V
I_D	Drain Current – Continuous ($T_c=25^\circ C$)	17	A
	Drain Current – Continuous ($T_c=100^\circ C$)	10.8	A
I_{DM}	Drain Current – Pulsed ¹	68	A
EAS	Single Pulse Avalanche Energy ²	281	mJ
IAS	Single Pulse Avalanche Current ²	7.5	A
P_D	Power Dissipation ($T_c=25^\circ C$)	195	W
	Power Dissipation – Derate above $25^\circ C$	1.56	W/ $^\circ C$
T_{STG}	Storage Temperature Range	-50 to 150	$^\circ C$
T_J	Operating Junction Temperature Range	-50 to 150	$^\circ C$

Thermal Characteristics

Symbol	Parameter	Typ.	Max.	Unit
$R_{\theta JA}$	Thermal Resistance Junction to ambient	---	62	$^\circ C/W$
$R_{\theta JC}$	Thermal Resistance Junction to Case	---	0.64	$^\circ C/W$

Electrical Characteristics ($T_J=25\text{ }^\circ\text{C}$, unless otherwise noted)
Off Characteristics

Symbol	Parameter	Conditions	Min.	Typ.	Max.	Unit
BV_{DSS}	Drain-Source Breakdown Voltage	$V_{GS}=0V, I_D=250\mu A$	800	---	---	V
I_{DSS}	Drain-Source Leakage Current	$V_{DS}=800V, V_{GS}=0V, T_J=25^\circ\text{C}$	---	---	1	μA
		$V_{DS}=640V, V_{GS}=0V, T_J=100^\circ\text{C}$	---	---	10	μA
I_{GSS}	Gate-Source Leakage Current	$V_{GS}=\pm 30V, V_{DS}=0V$	---	---	100	nA

On Characteristics

$R_{DS(ON)}$	Static Drain-Source On-Resistance	$V_{GS}=10V, I_D=11A$	---	220	275	m Ω
$V_{GS(th)}$	Gate Threshold Voltage	$V_{GS}=V_{DS}, I_D=250\mu A$	2	3	4	V
gfs	Forward Transconductance	$V_{DS}=30V, I_D=2A$	---	6	---	S

Dynamic and switching Characteristics

Q_g	Total Gate Charge ^{3,4}	$V_{DS}=640V, V_{GS}=10V, I_D=17A$	---	57.5	86	nC
Q_{gs}	Gate-Source Charge ^{3,4}		---	6.6	10	
Q_{gd}	Gate-Drain Charge ^{3,4}		---	24	36	
$T_{d(on)}$	Turn-On Delay Time ^{3,4}	$V_{DS}=400V, V_{GS}=10V, R_G=25\Omega, I_D=17A$	---	32	42	ns
T_r	Rise Time ^{3,4}		---	56.5	40	
$T_{d(off)}$	Turn-Off Delay Time ^{3,4}		---	160	132	
T_f	Fall Time ^{3,4}		---	49	234	
C_{iss}	Input Capacitance	$V_{DS}=640V, V_{GS}=0V, F=1\text{MHz}$	---	1800	2700	pF
C_{oss}	Output Capacitance		---	40	60	
C_{rss}	Reverse Transfer Capacitance		---	7	11	
R_g	Gate resistance	$V_{GS}=0V, V_{DS}=0V, F=1\text{MHz}$	---	2.1	---	Ω

Drain-Source Diode Characteristics and Maximum Ratings

Symbol	Parameter	Conditions	Min.	Typ.	Max.	Unit
I_S	Continuous Source Current	$V_G=V_D=0V, \text{Force Current}$	---	---	17	A
I_{SM}	Pulsed Source Current		---	---	34	A
V_{SD}	Diode Forward Voltage	$V_{GS}=0V, I_S=10A, T_J=25^\circ\text{C}$	---	---	1.4	V
t_{rr}	Reverse Recovery Time	$V_R=400V, I_S=17A$	---	495	---	ns
Q_{rr}	Reverse Recovery Charge	$di/dt=100A/\mu s, T_J=25^\circ\text{C}$	---	8920	---	nC

Note :

1. Repetitive Rating : Pulsed width limited by maximum junction temperature.
2. $V_{DD}=100V, V_{GS}=20V, L=10\text{mH}, I_{AS}=7.5A, R_G=25\Omega, \text{Starting } T_J=25^\circ\text{C}$.
3. The data tested by pulsed , pulse width $\leq 300\mu s$, duty cycle $\leq 2\%$.
4. Essentially independent of operating temperature.

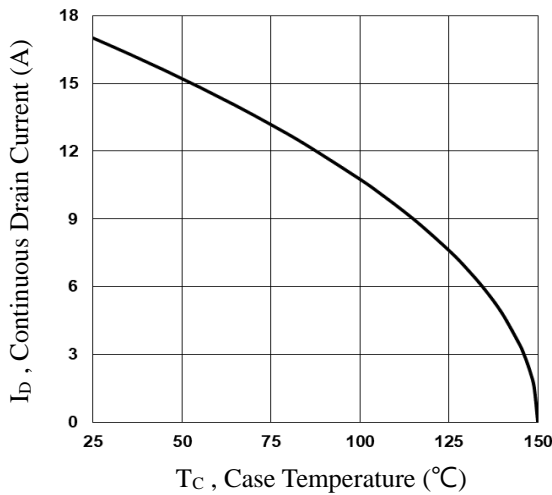


Fig.1 Continuous Drain Current vs. T_c

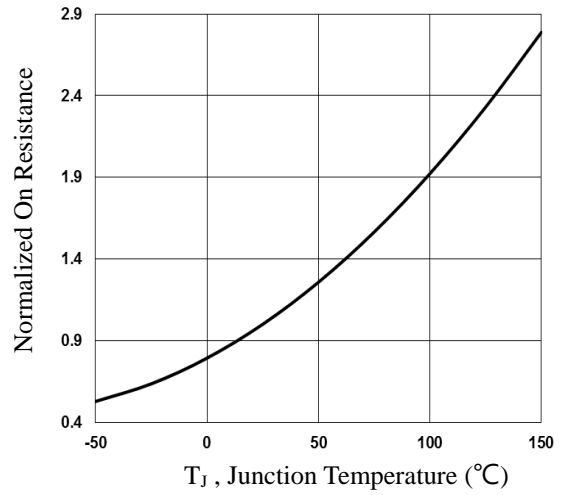


Fig.2 Normalized $R_{DS(on)}$ vs. T_j

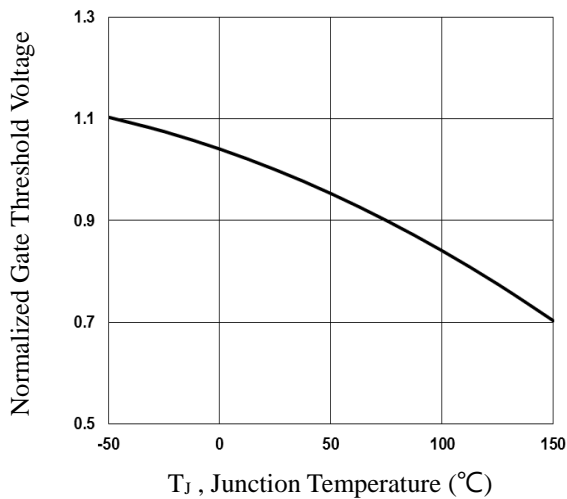


Fig.3 Normalized V_{th} vs. T_j

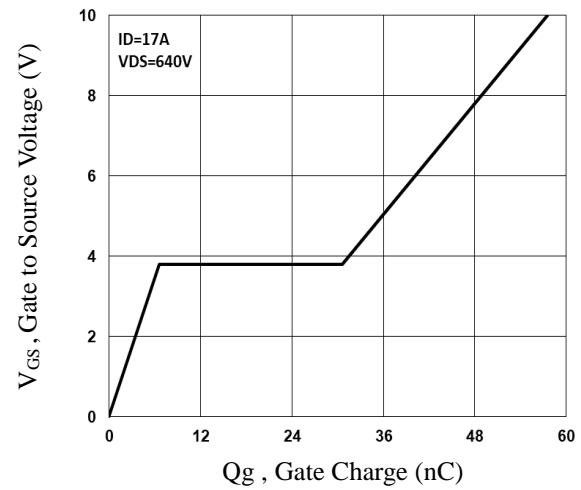


Fig.4 Gate Charge Characteristics

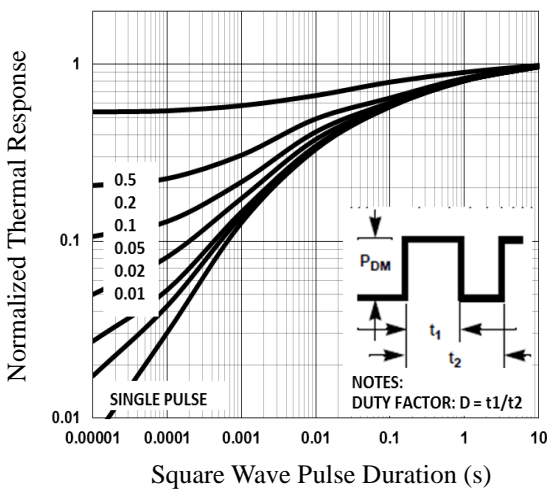


Fig.5 Normalized Transient Impedance

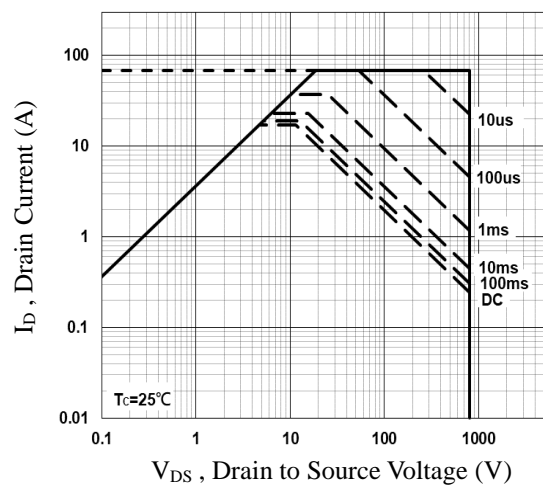


Fig.6 Maximum Safe Operation Area

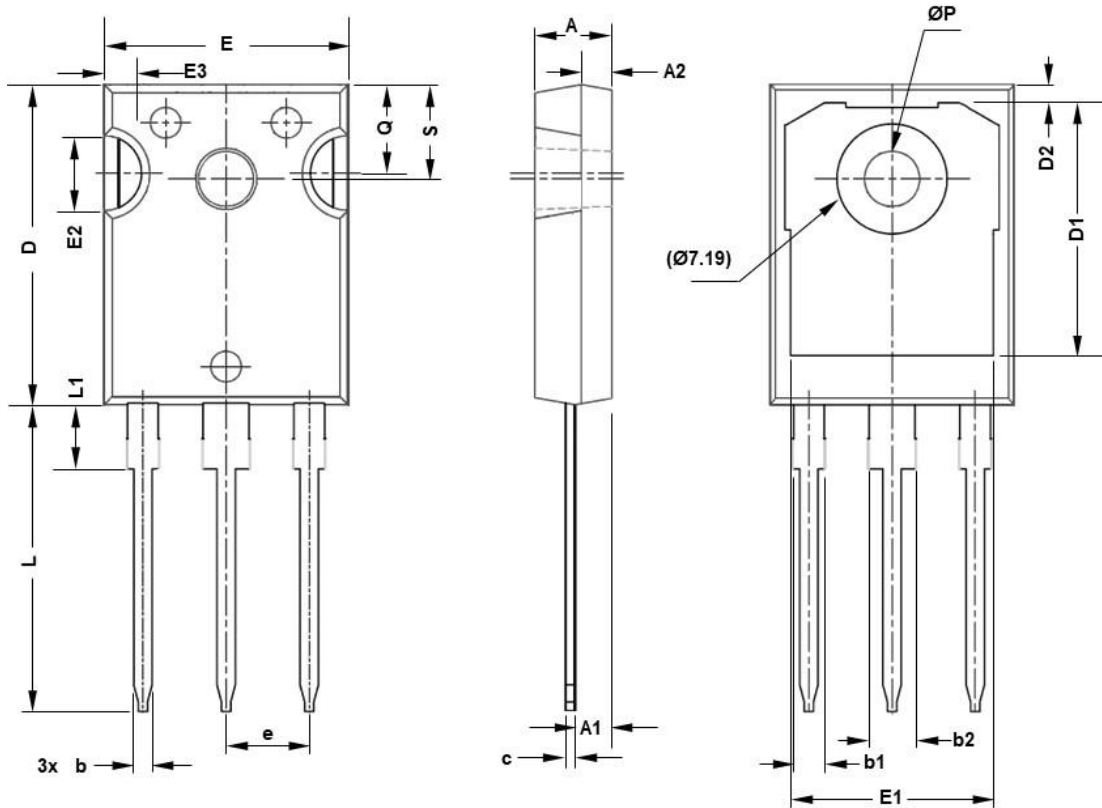


Fig.7 Switching Time Waveform



Fig.8 Gate Charge Waveform

TO247 PACKAGE INFORMATION



SYMBOL	mm		SYMBOL	mm	
	MIN	MAX		MIN	MAX
A	4.83	5.21	E2	4.32	5.49
A1	2.29	2.55	E3	2.15	2.80
A2	1.50	2.49	e	5.44BSC	
b	1.12	1.33	L	19.81	20.32
b1	1.91	2.39	L1	4.10	4.40
b2	2.87	3.22	ΦP	3.56	3.65
C	0.55	0.69	Q	5.39	6.20
D	20.80	21.10	S	6.04	6.30
D1	16.25	17.65			
D2	0.51	1.35			
E	15.75	16.13			
E1	13.46	14.16			