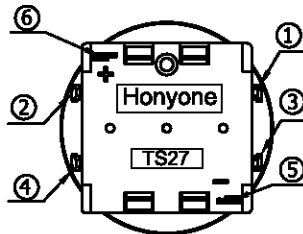
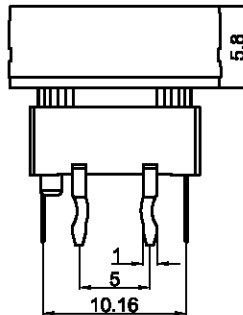
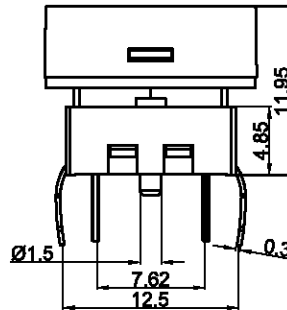
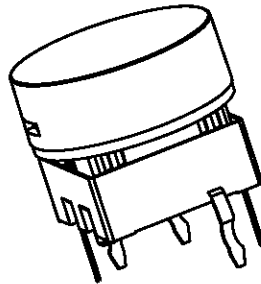
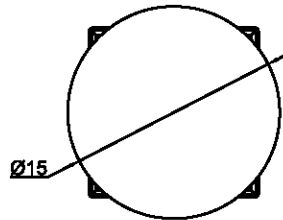


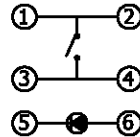
惠州宏利源电器有限公司

HONYONE ELECTRICAL APPLIANCE CO.,LTD

TS27



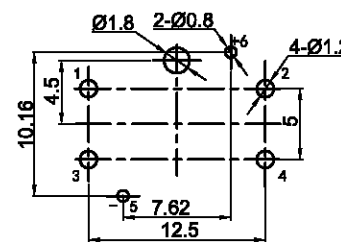
CIRCUIT



Switch Specifications

- Circuit :SPST
- Current rating :50mA
- Voltage rating :12VDC
- Dielectric withstanding voltage :250VAC for 1 minute
- Contact resistance :100mΩ Max. (Initial)
- Insulation resistance :100MΩ Min.
- Operating force :250±50gf
- Total travel :0.4mm±0.15mm
- Operating life :200,000 cycles Min
- Solder specifications :260° C for 5 seconds
- Function :Momentary
- Operating temperature :-20° C ~ +70° C

P.C.B.LAYOUT



LED Specifications

U	蓝色	2.8	3.2	3.7	40
G	翠绿色	2.8	3.2	3.7	40
W	白色	3.0	3.2	3.6	40
R	红色	1.8	2.0	2.5	40
灯发光颜色 X Emitted color X		最小	一般	最大	最大操作电流 (mA)
		顺向电压(V)			

Note:

- 1.This product is strictly prohibited wave soldering and reflow soldering,please use the manual welding processing, temperature of 350°±5°and time is 3±0.5 seconds;
- 2.After the product is welded on the PCB board,it is prohibited to use any solvent to clean the PCB board,and avoid the influence of the Inner product.

		公差 TOLERANCES		.X± 0.3	.XX± 0.15	角度 ANGLE ± 1°		单位 DIMENSION UNIT	mm.		
A1	新加焊锡要求说明	2016.08.03	N/A	视角 VIEWING ANGLE		比例尺 SCALE	NONE	日期 DATE	2016.08.03	品名 TITLE	图号 DRAWING NO
A0	New Issue	2016.05.27	N/A	核准	Richard	核对	Sinc	绘图	Mashaofei	TS27-1TW-X-S	TS27-1TW-X-S_CP_A1
版本 VER.	变更说明 CHANGE DESCRIPTION	日期 DATE	ECN NO.	APPROVED BY		CHECKED BY		DRAWN BY			