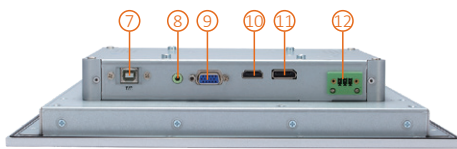
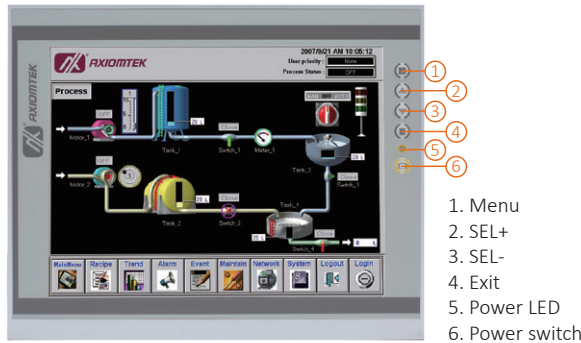


# P6121-V3

## 12.1" XGA TFT Industrial LCD Monitor



- 7. USB touch interface
- 8. Audio (Line-in)
- 9. VGA
- 10. HDMI
- 11. DisplayPort
- 12. 24 VDC power input

### Features

- 12.1" XGA TFT LED backlight LCD with 500 nits of brightness
- NEMA 4/12 (IP65) compliant flat panel monitor
- Supports panel mount, wall mount, and VESA arm
- Resistive touchscreen
- 24 VDC power input
- HDMI, DisplayPort, and VGA with multi-signal inputs



- ▲ Ultra-slim mechanism design

### Introduction

The P6121-V3 is an ultra slim industrial LCD monitor, which adopts 12.1-inch 500 nits XGA LED backlight LCD display and supports multi-signal interfaces including DisplayPort, VGA, and HDMI. Featuring NEMA 4/12 and IP65-rated compliant front bezel, 24VDC power input. Moreover, the P6121-V3 supports panel mount, wall mount or VESA FPMPI (Video Electronics Standards Association Flat Panel Monitor Physical Mounting Interface) mounting. With the compact mechanism design, users can enjoy free from space constraint. It is especially suitable for POI/POS, excellent HMI, and all kinds of heavy-duty industrial fields.

### Specifications

Front Bezel	NEMA 4/12 (IP65)-compliant and metal front bezel	
Mounting	Panel mount, wall mount or VESA arm FPMPI mounting (video electronics standards association flat panel monitor physical mounting interface)	
LCD Panel	Display	12.1" XGA TFT LCD
	Max. Resolution	1024 x 768
	Max. Colors	16.7M
	Active Area (mm)	245.76 x 184.32
	Pixel Pitch (mm)	0.24 x 0.24
	Response Time	25ms
	Backlight	LED backlight
	Backlight MTBF	30,000 hrs
	Viewing Angle (H/V)	178°/178°
	Contrast Ratio	1000 (TYP.)
Brightness (cd/m <sup>2</sup> )	500 nits	

Display Control	OSD (on screen display)
Input Signal	DP VGA HDMI Touchscreen: USB interface
I/O Connectors	1 x USB for touchscreen version 1 x Audio (Line-in) 1 x VGA 1 x DisplayPort 1 x HDMI 1 x Power input with terminal block (DC version)
Audio	2 x Speaker
Power Adapter	DC version: 24VDC
Power Consumption	22W
Touchscreen	5-wire resistive touch
Dimensions	311.81 mm (12.28") (W) x 54.95 mm (2.16") (D) x 250.31 mm (9.85") (H)
Packing Dimensions	520 mm (20.47") (W) x 196 mm (7.71") (D) x 547 mm (21.53") (H)
Weight (net/gross)	2.35 kg (5.18 lbs)/2.8 kg (6.17 lbs)
Environment	Operating temperature: 0°C to +50°C (+32°F to +122°F) Relative humidity: 10% to 90% @ +40°C, non-condensing
Certifications	CE, EN 61000-6-2, EN 61000-6-4, and FCC Class A

## Ordering Information

P6121PR-DC-U-V3 (P/N: E226121114)	12.1" industrial monitor with resistive touch screen and DC version
--------------------------------------	---

\* Other configuration by request

\* Specification and certifications may vary based on different requirements

## Packing List

1 x P6121-V3 unit  
1 x VGA cable  
1 x USB cable for touchscreen  
1 x Audio cable

## Optional Accessories

509000001500	Adaptor 24V/120W, wire only
599000001100	US 1.8M power cord
59904010000E	UK 1.83M power cord
59903000000E	EU 1.83M power cord
590000012700	HDMI cable
590000020900	DisplayPort cable 2M
82261210000E	Panel mount kit
82231770050E	Wall mount kit
E226171119	Desktop stand

## Dimensions

