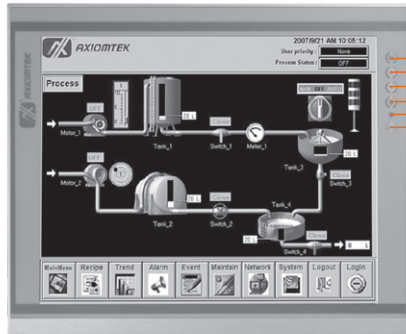
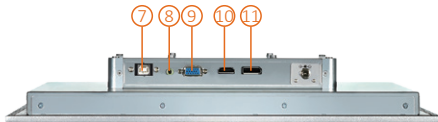


P6151-V3

15" XGA TFT Industrial LCD Monitor



1. Menu
2. SEL+
3. SEL-
4. Exit
5. Power LED
6. Power switch



7. USB touch interface
8. Audio (Line-in)
9. VGA
10. HDMI
11. DisplayPort

Features

- 15" XGA TFT LCD with 420 nits of brightness
- Resistive touch
- NEMA 4/12 (IP65) compliant front bezel
- Full range screw-type (locked) AC-in or 24 VDC in (optional)
- HDMI, DisplayPort, and VGA with multi-signal inputs
- Supports panel mount, wall mount, and VESA mount
- Built-in speakers



▲ Ultra-slim mechanism design

Introduction

The P6151-V3 is an ultra slim industrial LCD monitor, which adopts 15-inch 420 nits XGA LED backlight LCD display and supports multi-signal interfaces including DisplayPort, VGA, and HDMI. Featuring, screw-type adaptor plug design, and 12V/24V DC-in means it is fit for all kinds of industrial environments. With the compact mechanism design, users can enjoy free from space constraint. It is especially suitable for POI/POS, excellent HMI, and all kinds of heavy-duty industrial fields.

Specifications

Front Bezel	NEMA 4/12 (IP65)-compliant and metal front bezel	
Mounting	Panel mount, wall mount or VESA arm FPM PMI mounting (video electronics standards association Flat Panel monitor physical mounting interface)	
LCD Panel	Display	15" XGA TFT LCD
	Max. Resolution	1024 x 768
	Max. Colors	16.2M
	Active Area (mm)	304.128 x 228.096
	Pixel Pitch (mm)	0.297 x 0.297
	Response Time	16ms
	Backlight	LED backlight
	Backlight MTBF	30,000 hrs
	Viewing Angle (H/V)	160°/160°
	Contrast Ratio	800 (TYP.)
	Brightness (cd/m ²)	420 nits

Display Control	OSD (on screen display)
Input Signal	DisplayPort VGA HDMI Touchscreen: USB interface
I/O Connectors	1 x USB for touchscreen version 1 x Audio (Line-in) 1 x VGA 1 x DisplayPort 1 x HDMI 1 x Power input with screw type connector (AC version) 1 x Power input with terminal block (DC version)
Audio	2 x Speaker
Power Supply	AC version: 100- 240 VAC-DC, 12V3A, 36W power adapter DC version: 24 VDC
Power Consumption	14W
Touchscreen	5-wire resistive touch
Dimensions	377.9 mm (14.88") (W) x 58 mm (2.28") (D) x 309.3 mm (12.18") (H)
Packing Dimensions	520 mm (20.47") (W) x 196 mm (7.71") (D) x 547 mm (21.53") (H)
Weight (net/gross)	3.7 kg (8.15 lb)/5.9 kg (13 lb)
Environment	Operating temperature: 0°C to +50°C (+32°F to +122°F) Relative humidity: 10% to 90% @ +40°C, non-condensing
Certifications	CE, EN 61000-6-2, EN 61000-6-4, and FCC Class A

Ordering Information

P6151PR-AC-U-V3 (P/N: E226151116)	15" industrial monitor with resistive touch screen (USB interface) and AC version
P6151PR-DC-U-V3 (P/N: E226151118)	15" industrial monitor with resistive touch screen (USB interface) and DC version

* Other configuration by request

* Specification and certifications may vary based on different requirements

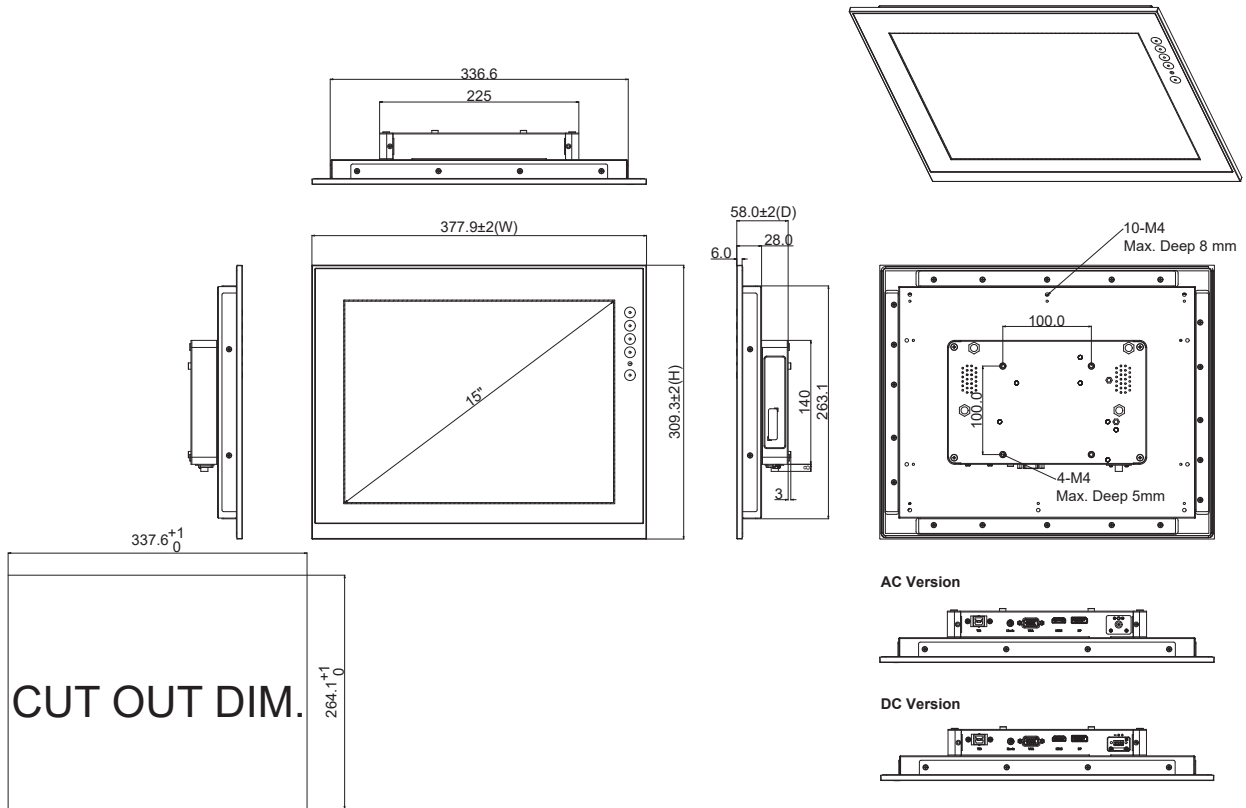
Packing List

1 x P6151-V3 unit
1 x VGA cable
1 x USB cable for touch
1 x Audio cable
1 x Adapter (AC Version)
1 x 3-pin Terminal block (DC version only)

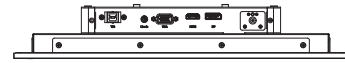
Optional Accessories

59000001500	Adaptor 24V/120W,wire only
599000001100	US 1.8M power cord
59904010000E	UK 1.83M power cord
59903000000E	EU 1.83M power cord
590000012700	HDMI cable
590000020900	DisplayPort cable 2M
881261510A0E	Panel mount kit
881231770A0E	Wall mount kit
E226171119	Desktop stand

Dimensions



AC Version



DC Version

