

IEC inlet filters YB-B Series



- Rated currents up to 10A
额定电流达到10A
- For one or two Fuses
有单或双保险丝
- Optional medical versions((R5) type)
医疗设备专用(R5)系列
- Quick connect(6.3*0.8mm)
快速端子(6.3*0.8mm)

Approvals(认证):



Technical Data 技术参数

Rated Voltage Max.(最大电压):	250VAC,50/60Hz
Operating frequency(工作频率):	DC to 400Hz
Rated currents(额定电流):	1~10A@40°C
Hipot Rating (耐电压):	L-N 1450VDC L/N-G 2000VAC/2250VDC L/N-G 4000VAC(R5 type)
Protection level(防护等级):	IP40 according to IEC 60529
Climatic category(气候类别):	-25°C~+85°C(25/85/21)
Design corresponding to(设计标准):	UL1283, CSA C22.2 No.8, IEC/EN 60939, CQC GB 15288/GB 15287-2008
Flammability corresponding to(防火等级):	UL 94V-0

Features 产品特点

Versions to 10A are available with fuse holder for one or two (5*20mm) fuses

--最高达到10A有一个或两个(5*20mm)保险丝

(R5) types comply with the requirements of IEC/EN60601-1 for safety clearance, leakage current and hipot testing.

--(R5)医疗专用产品依据IEC/EN60601-1标准对安全间隙, 低漏电流和超高耐压要求设计。

There are a variety of parts and combinations to meet different customer's EMC tests

--有多种零件组合搭配, 来满足不同客户整机EMC测试

Customized products according to customer's requirements

--可按客户要求定制不同规格产品

Typical Applications 应用范围

Portable electrical and electronic equipment

--便携式电器和电子设备

Electrical schematic 电路图

Standard type

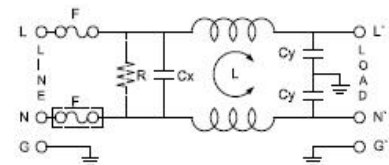


Fig.1

R5 type

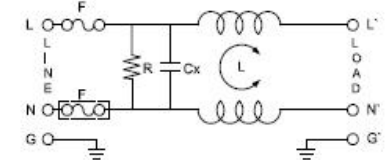


Fig.2

Lg type

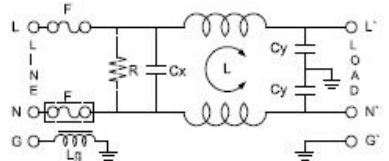


Fig.3

Medical equipment

--医疗设备

Test and measurement equipment

--测量测试设备

Small and medium-sized machines and household equipment

--中小型机械设备和家用设备

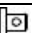


Single-phase power supply, switch-mode power supply

--单相电源, 开关电源

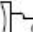
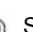

Rule of Nomination 命名原则说明

YB 11 A3 - 10A - Q (R 5 G) B1: One Fuse
 : 电路 : 外壳 : : 电流 : : : : 输出方式 : : : B2: Two Fuse
 Electrical Dimensions Current Output Optional 可选的
 Schematic

Product Tabulates 产品列表

Model No. 型号	Rated Current @40°C 额定电流	Terminal Options* 输出方式			Bleeder resistor(optional) 泄放电阻R(可选)	接地电感 G(可选)	Leakage current 250V/50Hz漏 电流	Electrical Schematic 电路图	Rated Voltage(V) 额定电压	Operating Frequency(Hz) 工作频率
										
YB11B1-1A	1A	Q	S	-	-	-	<0.8mA	115/250V	50/60Hz	
YB11B1-2A	2A	Q	S	-	-	-				
YB11B1-3A	3A	Q	S	-	-	-				
YB11B1-4A	4A	Q	S	-	-	-				
YB11B1-6A	6A	Q	S	-	-	-				
YB11B1-8A	8A	Q	S	-	-	-				
YB11B1-10A	10A	Q	S	-	-	-				
YB11B2-1A	1A	Q	S	-	-	-				
YB11B2-2A	2A	Q	S	-	-	-				
YB11B2-3A	3A	Q	S	-	-	-				
YB11B2-4A	4A	Q	S	-	-	-				
YB11B2-6A	6A	Q	S	-	-	-				
YB11B2-8A	8A	Q	S	-	-	-				
YB11B2-10A	10A	Q	S	-	-	-				

医疗专用产品 Medical Version

Model No. 型号	Rated Current @40°C 额定电流	Terminal Options 输出方式			Bleeder resistor(optional) 泄放电阻R(MΩ)	Medical equipment 医疗专用 5	接地电感 G	Leakage current 250V/50Hz 漏电流	Electrical Schematic 电路图	Rated Voltage(V) 额定电压	Operating Frequency(Hz)工 作频率
											
YB11B2-1A-x(R5)	1A	Q	S	-	1	5	<5μA	Fig.2	115/250V	50/60Hz	
YB11B2-2A-x(R5)	2A	Q	S	-	1	5					
YB11B2-3A-x(R5)	3A	Q	S	-	1	5					
YB11B2-4A-x(R5)	4A	Q	S	-	1	5					
YB11B2-6A-x(R5)	6A	Q	S	-	1	5					
YB11B2-8A-x(R5)	8A	Q	S	-	1	5					
YB11B2-10A-x(R5)	10A	Q	S	-	1	5					



*Q: Fast-on 6.35x0.8mm

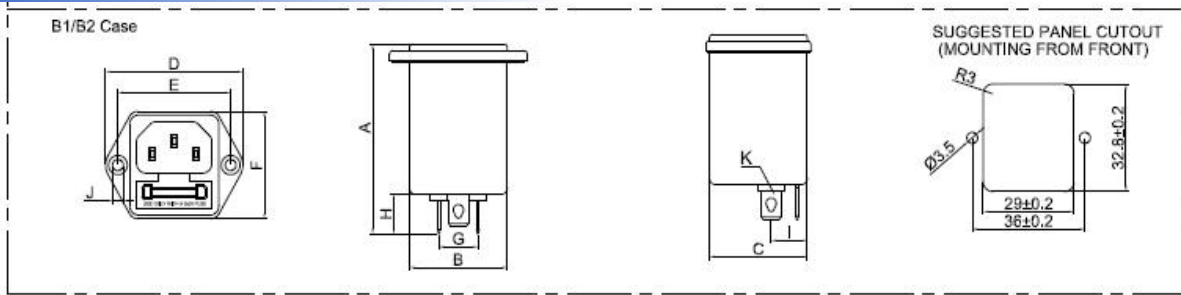


S: solder 4.0x0.8mm



W: UL1015 18awg

Mechanical Dimension外形图(Unit: mm)



Case	A	B	C	D	E	F	G	H	I	J	K
B1	58	28.5	32.4	44	36	33.5	12.8	11.1	12	3.5	6.3*0.8
B2	58	28.5	32.4	44	36	33.5	12.8	11.1	12	3.5	6.3*0.8
Tolerances 公差	±1	±1	±1	±1	±0.15	±1	±0.5	±0.5	±0.5	±1	±0.15

Insertion loss table(In 50ohm system according IEC/CISPR No.17)插入损耗(50欧姆测试系统, IEC/CISPR No.17)

————— 共模(common mode) - - - - - 差模(differential mode)

