



# SPECIFICATION FOR APPROVAL

Name:	EMI FILTER	Part No.:	
MODEL:	YX82G4-150A-S	Customer P/N :	CP01070123

## Amendment Record

Rev.	Issuing date	Revision Description	Reviser
A/0	2016-11-30	initial release	HZP
A/1	2022-12-08	Add the insertion loss curve	蔡萌萌

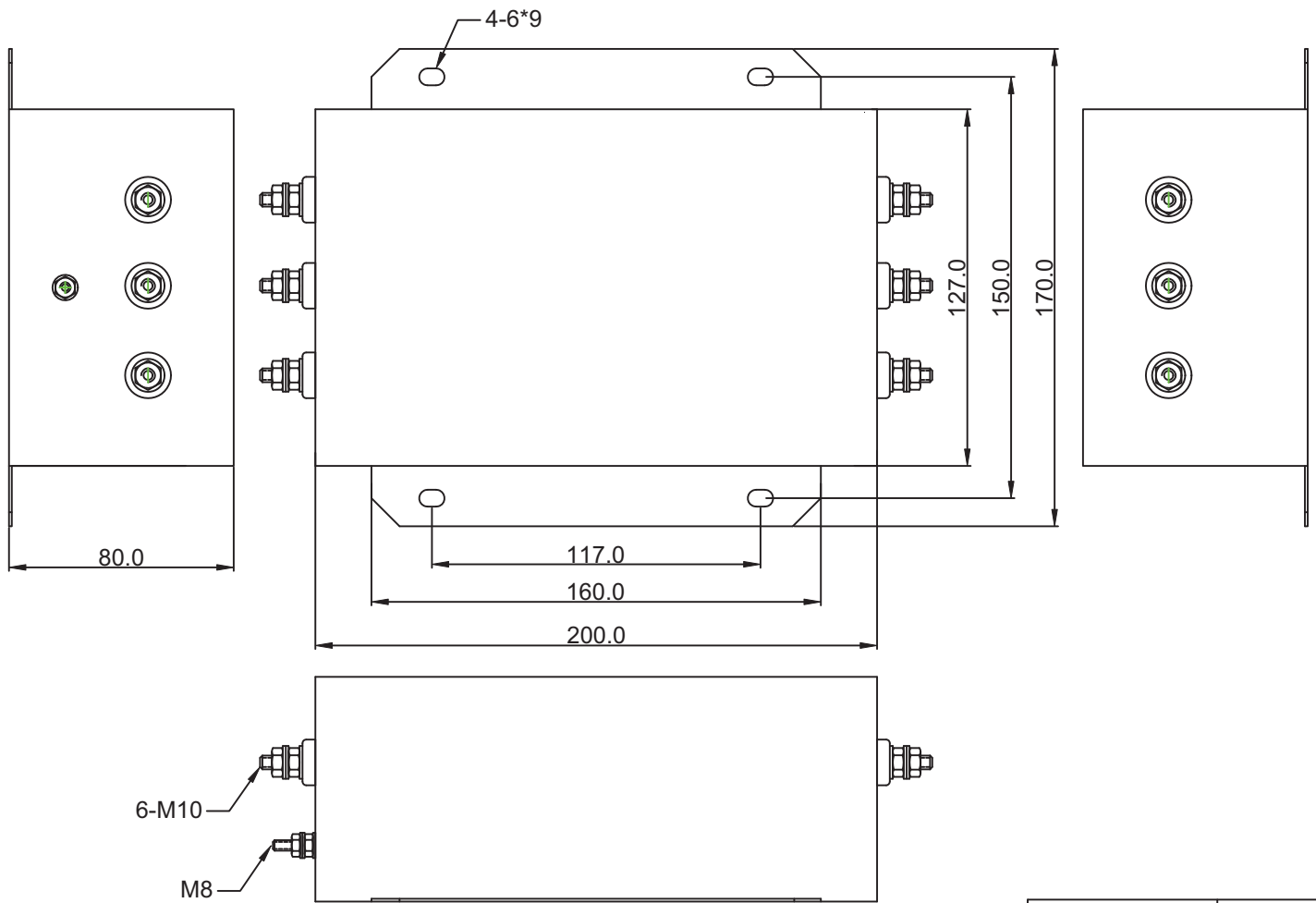
Drawing by	Checked by	Approved by	Ordering No.	Unit	Rev.	A/1
			YX82G4-150A-S	mm	<b>2022-12-08</b>	

# SPECIFICATION FOR APPROVAL

Name:	EMI FILTER	Part No.:	
YBX MODEL:	YX82G4-150A-S	Customer P/N :	CP01070123

1. PART NUMBER: YX82G4-150A-S

2. PHYSICAL DIMENSIONS:



0 ~ 10	±0.3
10 ~ 100	±0.5
100 ~ 150	±0.8
150 ~ 200	±1.0

Drawing by	Checked by	Approved by	Ordering No.	Unit	Rev.	Dimension Limit	Tolerance
R & D 2022.12.08 蔡萌萌	R & D 2022.12.08 喻钰钊		YX82G4-150A-S	mm	A/1		
						<b>2022-12-08</b>	

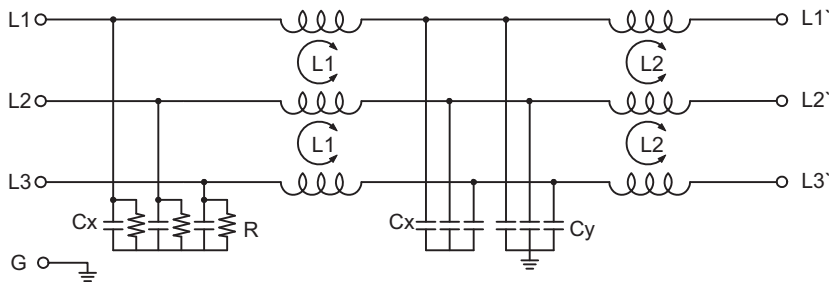
# SPECIFICATION FOR APPROVAL

Name:	EMI FILTER	Part No.:	
YBX MODEL:	YX82G4-150A-S	Customer P/N :	CP01070123

### 3. CHARACTERISTICS:

- (1) VOLTAGE RATING.....250/440VAC
- (2) CURRENT RATING:
  - A. @ 250VAC.....150A RMS Max.
  - B. @ 440VAC.....150A RMS Max.
- (3) OPERATING FREQUENCY: 50/60Hz
- (4) LEAKAGE CURRENT: EACH LINE TO GROUND(TEMP:25±2°C)
  - A. @ 250VAC/60Hz.....4.2mA Max.
  - B. @ 440VAC/50Hz.....6.6mA Max.
- (5) HIPOT RATING(FOR ONE MINUTE)
  - A. LINE TO GROUND.....2250VDC
  - B. LINE TO LINE.....1450VDC
- (6) IR: 50M ohm AT 500VDC ANY INPUT OR OUTPUT TO GROUND
- (7) TEMPERATURE RANGE: -25°C~+85°C

### 4. ELECTRICAL SCHEMATIC:

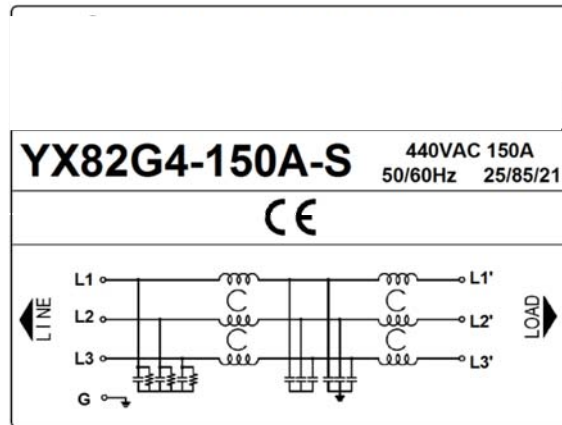


Drawing by	Checked by	Approved by	Ordering No.	Unit	Rev.	A/1
<div style="border: 1px solid red; border-radius: 50%; width: 40px; height: 40px; display: flex; flex-direction: column; justify-content: center; align-items: center; margin: 0 auto;"> <span style="color: red; font-weight: bold;">R &amp; D</span>  <span style="color: red;">2022.12.08</span>  <span style="color: red;">蔡萌萌</span> </div>	<div style="border: 1px solid red; border-radius: 50%; width: 40px; height: 40px; display: flex; flex-direction: column; justify-content: center; align-items: center; margin: 0 auto;"> <span style="color: red; font-weight: bold;">R &amp; D</span>  <span style="color: red;">2022.12.08</span>  <span style="color: red;">喻钰钊</span> </div>		YX82G4-150A-S	mm		2022-12-08

# SPECIFICATION FOR APPROVAL

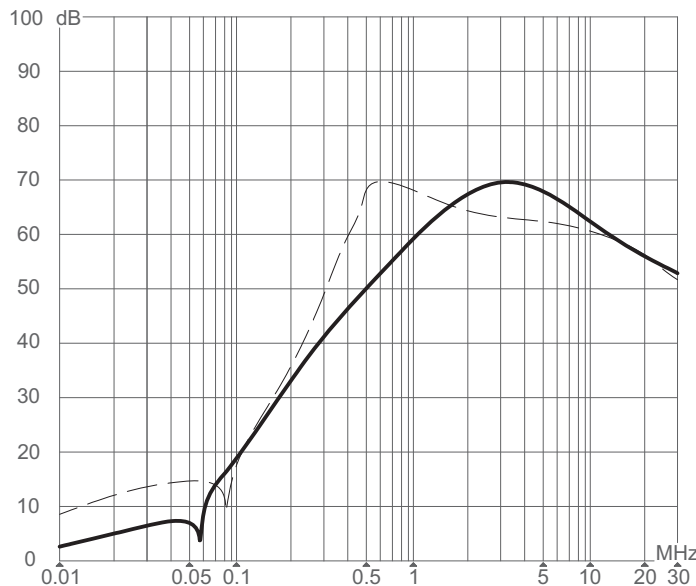
Name:	EMI FILTER	Part No.:	
YBX MODEL:	YX82G4-150A-S	Customer P/N :	CP01070123

5. Label:



6.INSERTION LOSS(IN 50 ohm system according IEC/CISPR No.17):

————— 共模(common mode)  
 - - - - - 差模(differential mode)



Drawing by	Checked by	Approved by	Ordering No.	Unit	Rev.	A/1
R & D 2022.12.08 蔡萌萌	R & D 2022.12.08 喻钰鈔		YX82G4-150A-S	mm	<b>2022-12-08</b>	