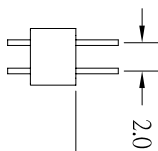
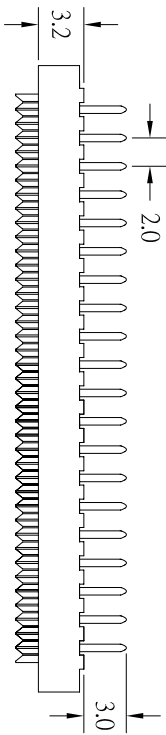
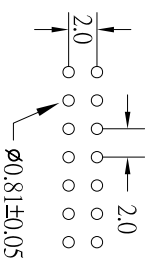
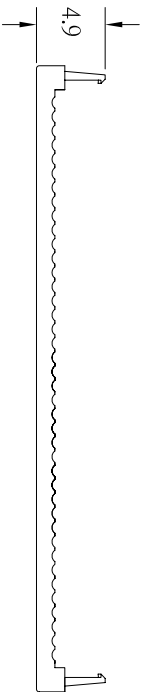
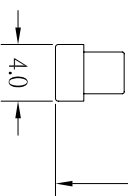


POSITION	A	B
8	12.20	6.00
10	14.20	8.00
12	16.20	10.00
14	18.20	12.00
16	20.20	14.00
20	24.20	18.00
22	26.20	20.00
24	28.20	22.00
26	30.20	24.00
30	34.20	28.00
34	38.20	32.00
40	44.20	38.00
44	48.20	42.00
50	54.20	48.00
68	72.20	66.00



(5.2)
TERMINATED
HEIGHT



RECOMMENDED P.C.B LAYOUT

SPECIFICATIONS

Material

Insulator : PBT, glass reinforced, rated UL 94V-0

Contact : Phosphor Bronze

Electrical

Current Rating : 1 Amp

Contact Resistance : 30 mΩ max.

Insulation Resistance : 3000 MΩ min.

Dielectric Withstanding Voltage : 500V AC for 1minute

Operating Temperature : -40°C to +105°C

◆ Terminated with L02-1.00mm pitch flat ribbon cable.

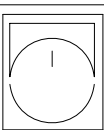
UNLESS OTHERWISE SPECIFIED

TOLERANCE

.X ±0.3

.XX ±0.2

.XXX ±0.1



DON CONNEX
ELE. CO., LTD

PART NAME:

DIP PLUG

UNIT: mm

SCALE: / SHEET:1/1

DRAW NO. A11a-01CAT-A

THIRD



FILE NO. A11a-01CAT-A

RD

CHECK

2009/05/18