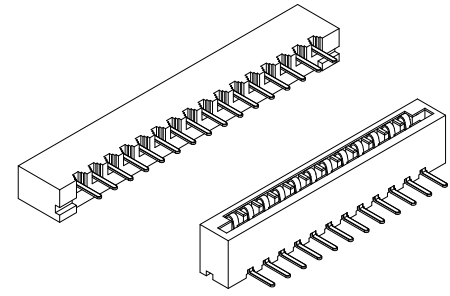


REV.	SPECIFICATION	ECN NO.	APPD.
------	---------------	---------	-------



Material:

Housing: 30% Glass Filled PBT UL94V-0.

Contacts: Phosphor Bronze.

Electrical Characteristics:

Current Rating: 1 AMP.

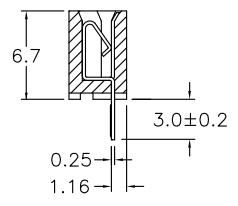
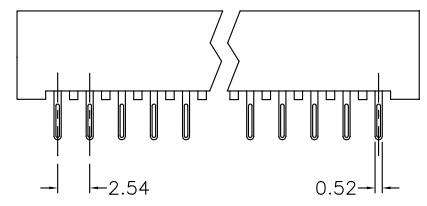
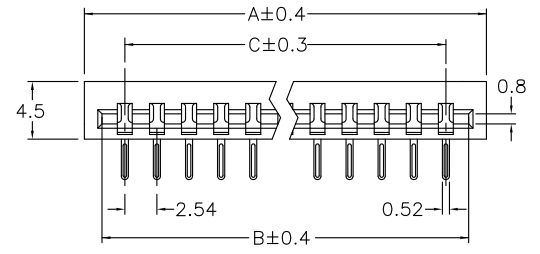
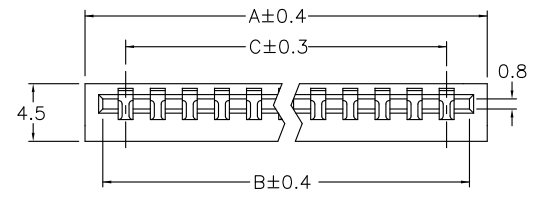
Dielectric Withstanding Voltage: AC 1000V For 1 minute.

Insulator Resistance: 1000MΩ min. at DC 500V.

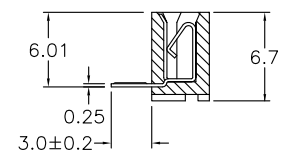
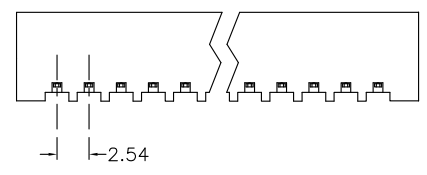
Contact Resistance: 20mΩ max. at DC 100mA.

Operating Temperature: -55°C~+105°C.

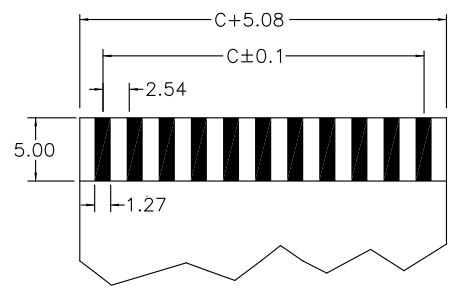
***RoHS Compliant**



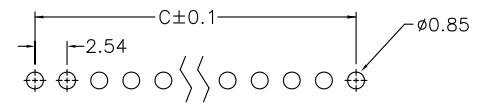
Top Entry Type



Side Entry Type



FFC/FPC Dimension
Thickness 0.3±0.05mm



P.C. Board Layout

2032-
Series

XX
No. of
Pin Count

T
T: Tin Plated

S
S: Top Entry (Straight)
R: Side Entry (Right Angle)

U
U: Tube Package

Position	2 Thru 26
Dimension	
A	(No. of Positions X 2.54)+5.46
B	(No. of Positions X 2.54)+3.35
C	(No. of Positions - 1) X 2.54

Tolerances	Drawn No.	2032D02002	Title:	
x = ±0.25	Projection		2032 Series	
.x = ±0.20	Unit	mm	Scale	SCALE
.xx = ±0.15	Drawn By	Liling 06/18'08	FFC/FPC Connector 2.54mm	

①-716

OUPIN ELECTRONIC(KUNSHAN) CO., LTD.			
P/N: 2032-XXTXU			
SHEET	1/1	Ver.No.	A5