

Connector

I.D.C. Box Header 2.54mm(0.100")

Electrical Characteristics:

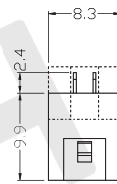
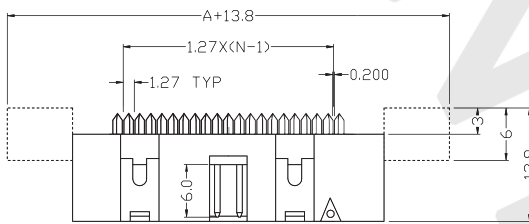
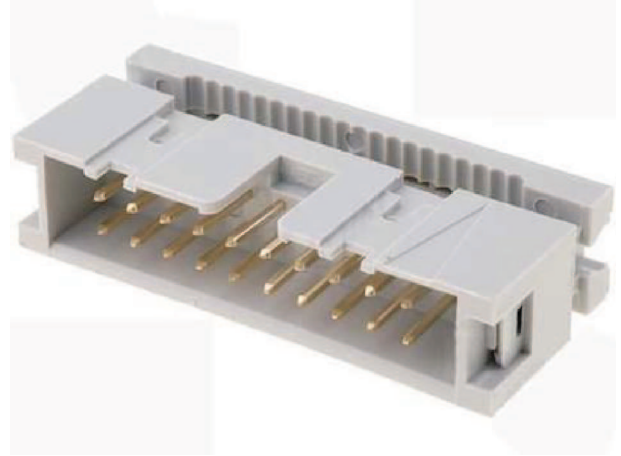
Current Rating: 1 AMP
 Insulator Resistance: 5000MΩmin. at DC 500V
 Contact Resistance: 20mΩmax. at DC 100mA
 Operating Temperature: -45°C~+105°C

Material:

Housing: 30% Glass filled PBT UL94V-0
 Contacts: Brass
 Plating: Selective gold plated : gold plated on mating area and nickel plated on wire Cutting area
 Cable: 1.27mm(0.050")pitch flat cable

Features:

- * Fully shrouded provides ultimate reliability,
- * With polarization.
- * Mounting ears optional.



Dimension

position	A	B	C
08	20.46	15.26	7.62
10	23.00	17.80	10.16
14	28.08	22.88	15.24
16	30.62	25.42	17.78
20	35.70	30.50	22.86
26	43.32	38.12	30.48
30	48.40	43.20	35.56
34	53.48	48.28	40.64
40	61.10	55.90	48.26
50	73.80	68.60	60.96

