



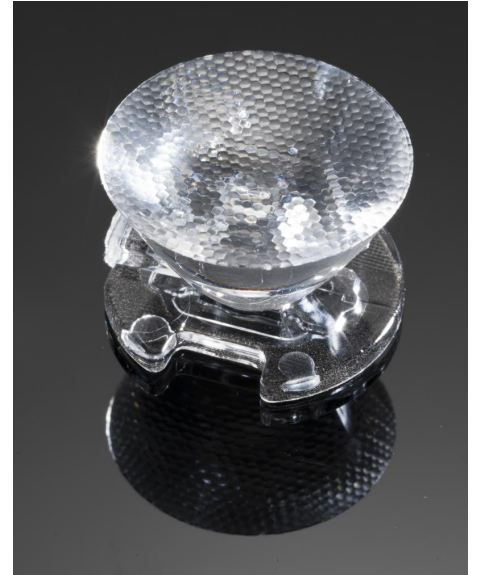
PRODUCT DATASHEET

Rocket-(sputnik) series

last update 26/6/2013

DETAILS

| | |
|------------------------|-------------------|
| Product Number | CA10324_ROCKET-SS |
| Family | Rocket-(sputnik) |
| Type | Assembly |
| Color | clear |
| Diameter | 26 mm |
| Height | 15,1 mm |
| Style | round |
| Optic Material | PMMA |
| Holder Material | |
| Fastening | tape |
| Status | production ready |
| ROHS Compliant | Yes |
| Date Updated | 26/06/2013 |



OPTICAL PROPERTIES

| LED | Viewing Angle | Light Beam | Efficiency | cd/lm | Connector |
|------|---------------|---------------|------------|-------|-----------|
| XR-E | 8 deg | Smooth spo... | .89 % | - | - |

D

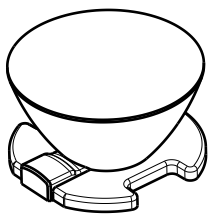
C

B

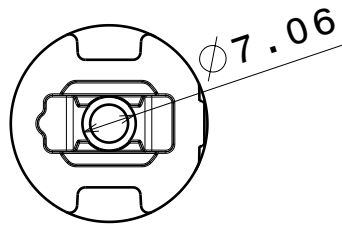
A

4

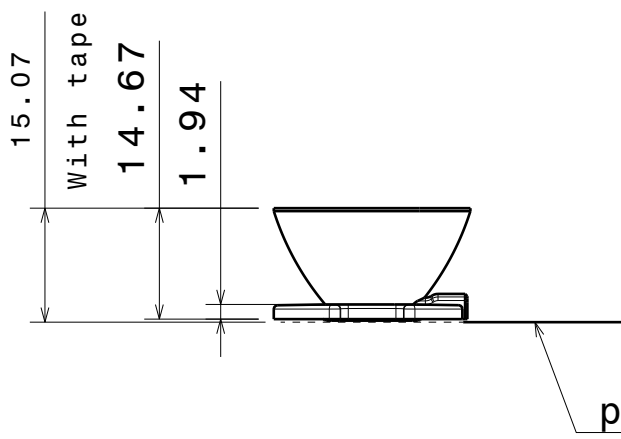
4



Isometric view



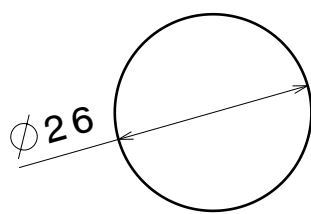
Bottom view



Front view

3

3



Top view

2

2

Material:
 lens PMMA
 tape PU foam

This drawing is our property.
 It can't be reproduced
 or communicated without
 our written agreement.



L
T
F
F

e
e
i
i
N
n

d

h

DRAWING TITLE

Datasheet Rocket Lens

1

1

DRAWN BY
p

DATE
16.02.2009

CHECKED BY
T K

DATE
18.03.2008

SIZE
A4

DRAWING NUMBER

REV
0.2

DESIGNED BY
HH

DATE
18.03.2008

SCALE 1:1

WEIGHT (g)

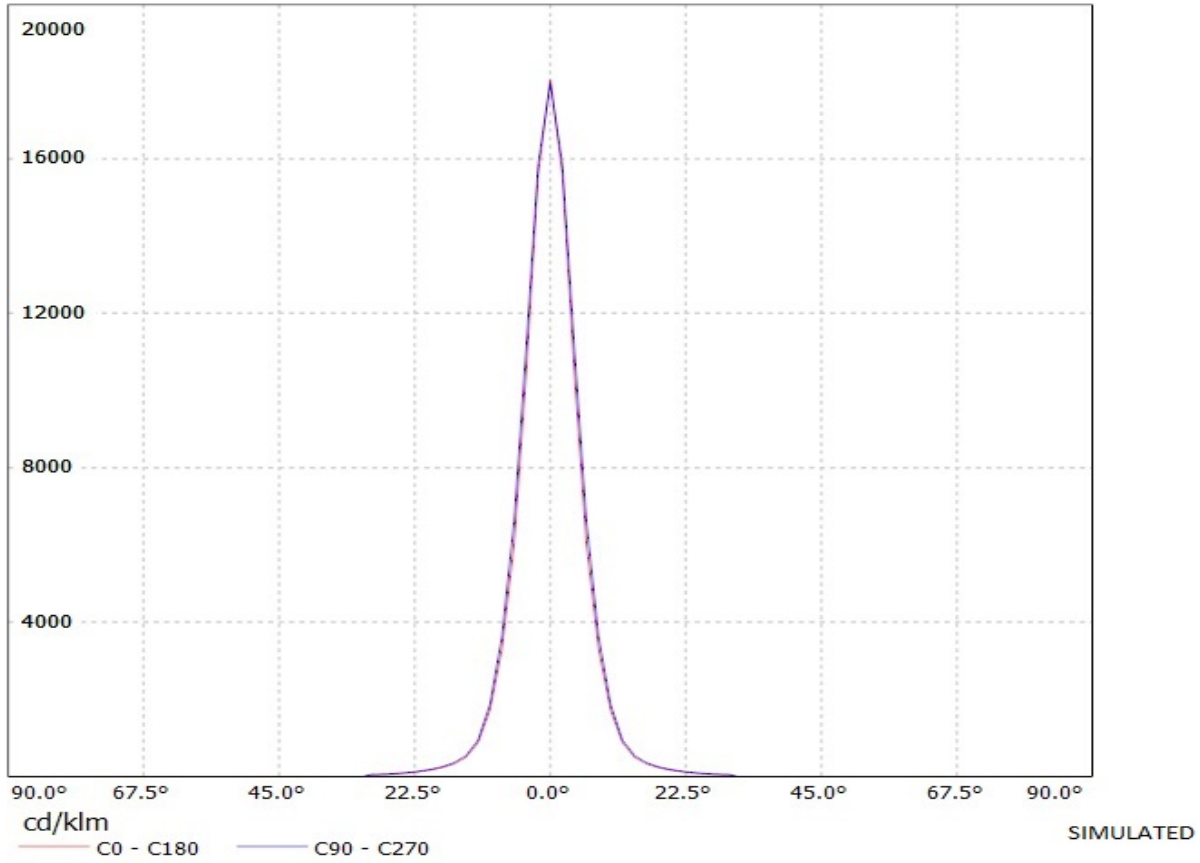
SHEET 1/1

D

A

Ledil Oy 10324_Rocket-SS 10324_Rocket-SS / LDC (Linear)

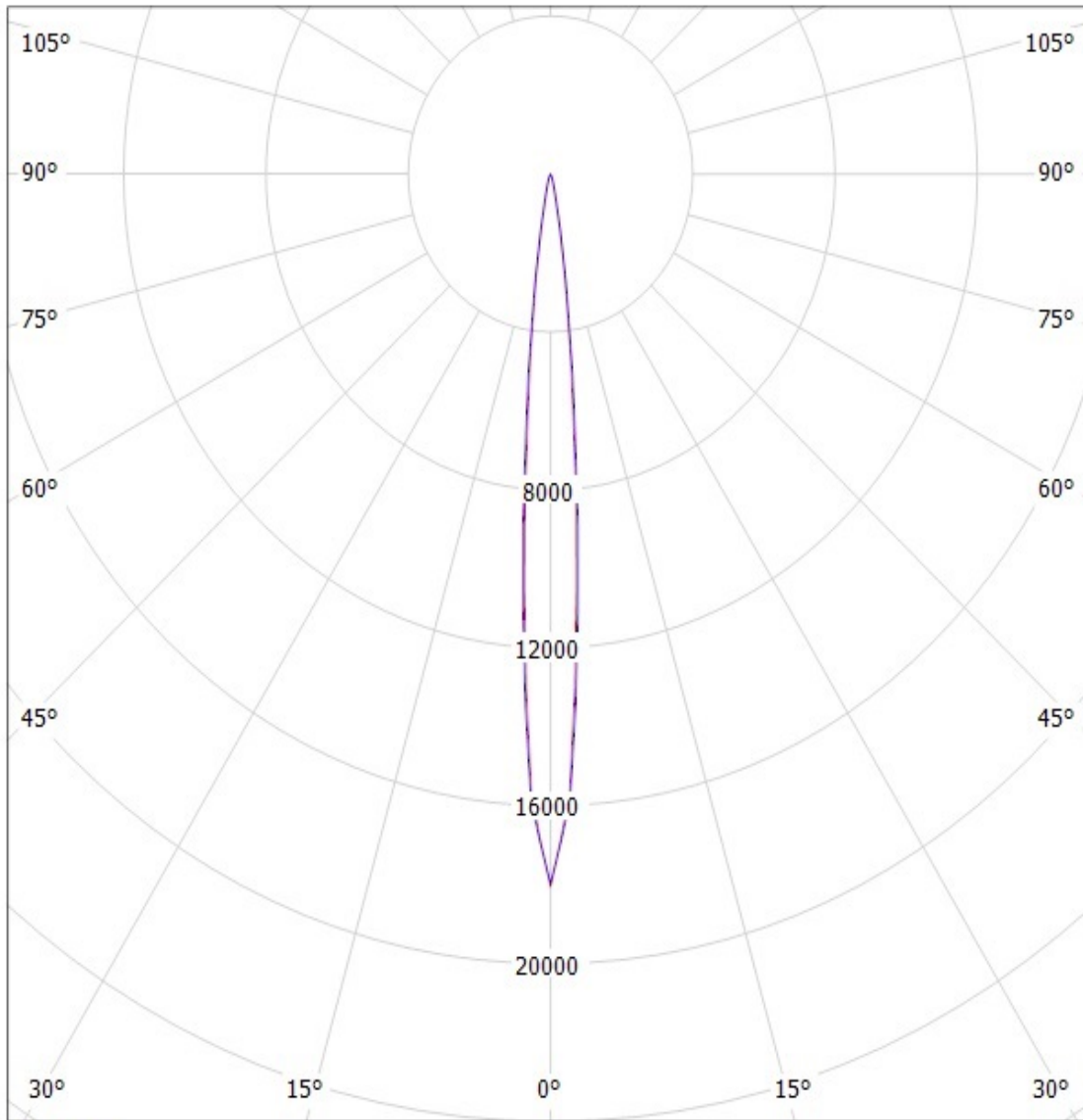
Luminaire: Ledil Oy 10324_Rocket-SS 10324_Rocket-SS
Lamps: 1 x Cree XR-E (white)



Ledil Oy 10324_Rocket-SS 10324_Rocket-SS / LDC (Polar)

Luminaire: Ledil Oy 10324_Rocket-SS 10324_Rocket-SS

Lamps: 1 x Cree XR-E (white)



cd/klm

— C0 - C180

— C90 - C270

SIMULATED

NOTE: The typical divergence will be changed by different color, chip size and chip position tolerance. The typical total divergence is the full angle measured where the luminous intensity is half of the peak value.