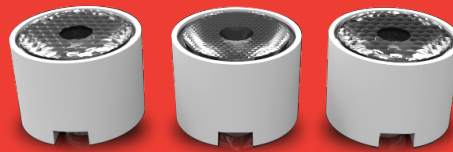
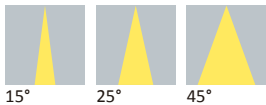


Datasheet

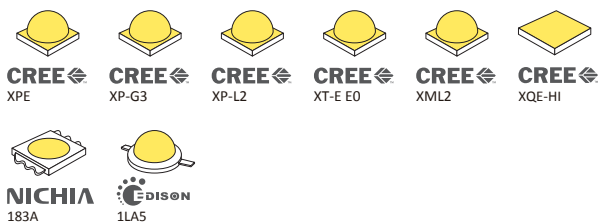
# CV Series



## Available Distribution



## LED



## Recommad Applications



## General Information



- Lens Material                    PMMA 8N
- Operating Temperature        -40°C~+70°C
- UL Flammability                HB@1.5mm
- UL RTI Elec                      90°C@1.5mm
- Light Transmission Rate       400nm~900nm > 90%

If necessary, Clean lenses with mild soap, water and soft cloth.

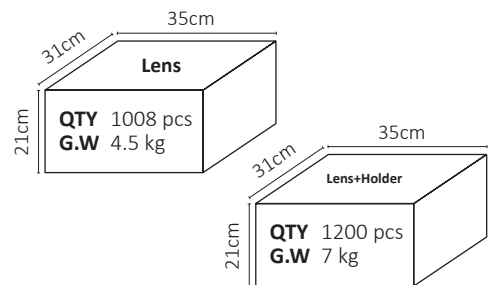
- ⚠ Never use any commercial cleaning solvents on lenses, like alcohol.
- ⚠ Please handle or install lenses with wearing gloves, skin oils may damage lens or its optical characteristic.

## Dimensions

Part Number	Diameter	Height
LL01ED-CV××L06	Ø19.6	12.3
LL01ED-CV××L06-M2	Ø21.1	15
LL01CR-QG××L06-M2	Ø21.1	12.9

\*All dimensions are in millimeters.

## Packaging Details (SPQ)



## Accessories



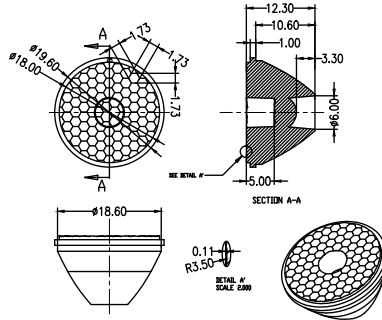
- 2 Different Types of Holder  
LL01EDCX25H×  
LL01CRQG15H×

# Mechanical Specification

\*All dimensions are in millimeters.

## Lens Dimension

LL01ED-CV××L06



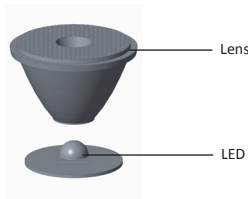
## Assembly Instruction

Part No LL01ED-CV××L06

Fixing Method



Luminaire Accessories



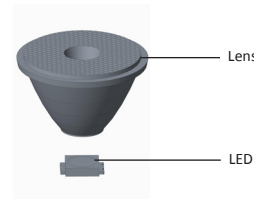
## Assembly Instruction

Part No LL01ED-CV××L06

Fixing Method

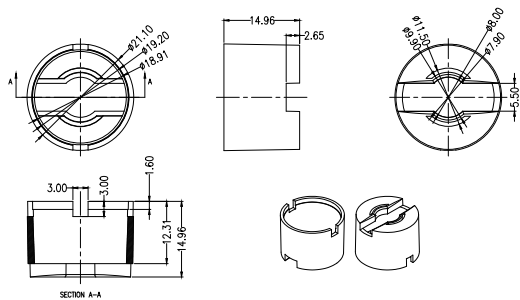


Luminaire Accessories



## Holder Dimension

LL01EDCX25Hx



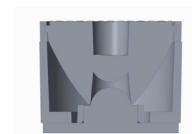
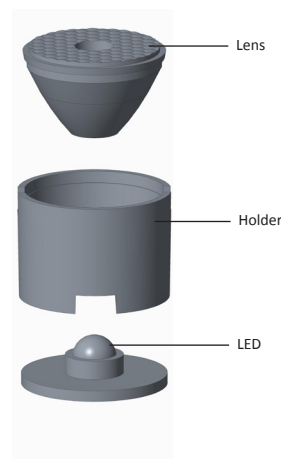
## Assembly Instruction

Part No LL01ED-CV××L06-M2  
Holder LL01EDCX25Hx

Fixing Method



Luminaire Accessories



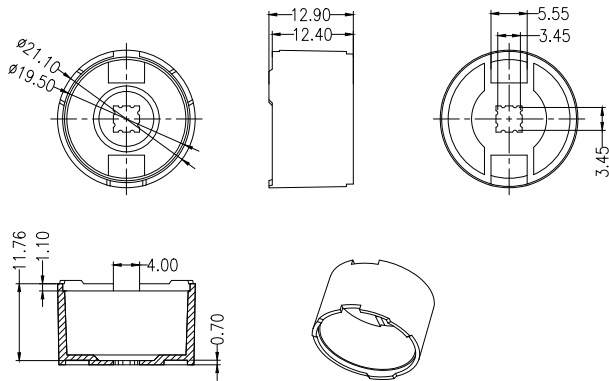
# Mechanical Specification

\*All dimensions are in millimeters.

## Holder Dimension



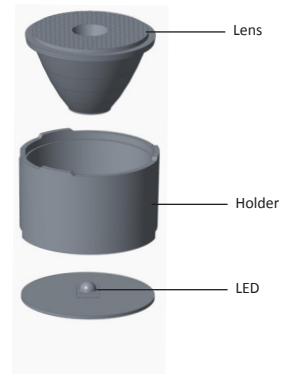
LL01CRQG15Hx



## Assembly Instruction

### Fixing Method

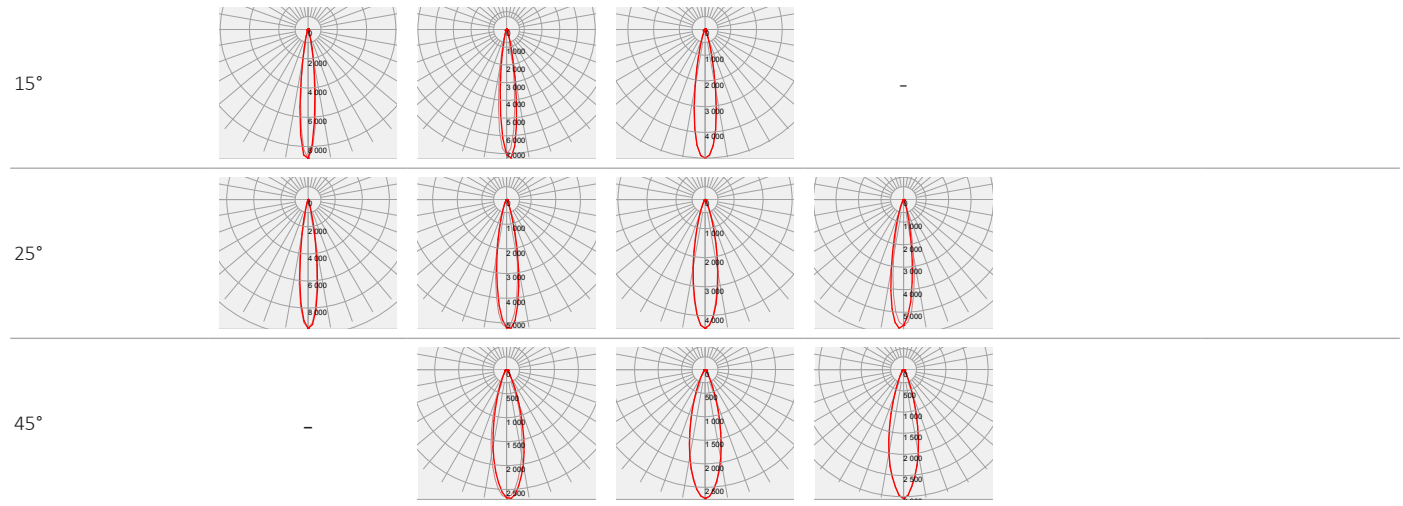
Part No LL01CR-QGxxL06-M2  
Holder LL01CRQG15Hx



# Photometric Distribution

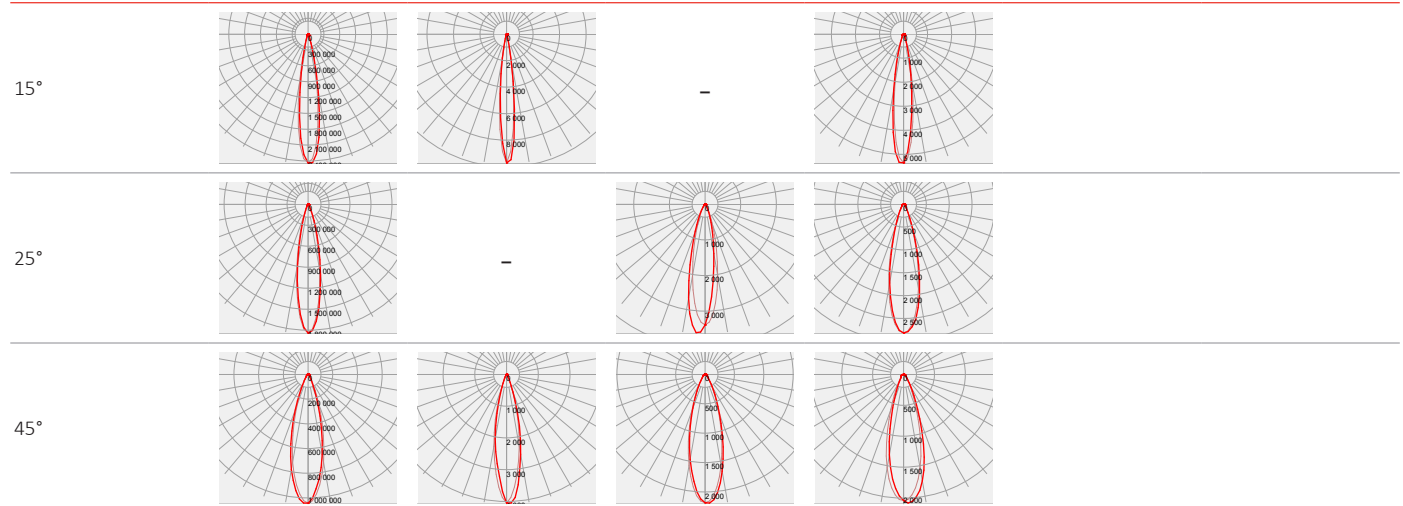
CR-QG

				
<b>LED</b>	<b>CREE</b> XPE	<b>CREE</b> XP-G3	<b>CREE</b> XP-L2	<b>CREE</b> XT-E E0


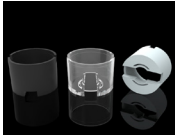

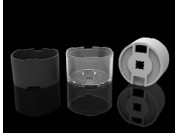











ED-CV

				
<b>LED</b>	<b>CREE</b> XML2	<b>CREE</b> XQE-HI	<b>NICHIA</b> 183A	<b>OSRAM</b> 1LA5

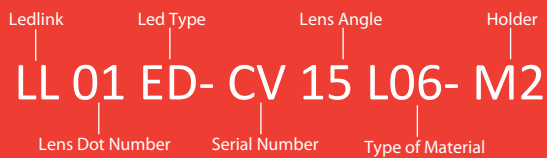


# Details by LED

Part No	Holder	LED Package Size	LED
LL01ED-CVxxL06	-	1616/5050/5056	 <b>CREE</b> XML2 <b>CREE</b> XQE-HI <b>NICHIA</b> 183A
LL01ED-CVxxL06-M2	 LLO1EDCX25Hx	1LA5	 <b>EDISON</b> 1LA5
LL01CR-QGxxL06-M2	 LLO1CRQG15Hx	3535	 <b>CREE</b> XPE <b>CREE</b> XP-G3 <b>CREE</b> XP-L2 <b>CREE</b> XT-E E0

LED	Part No	FWHM	cd / lm	IES
 <b>CREE</b> XML2	LL01ED-CV15L06	17°	6.6	↓
	LL01ED-CV25L06	20°	5.2	↓
	LL01ED-CV45L06	27°	2.9	↓
 <b>CREE</b> XQE-HI	LL01ED-CV15L06	12°	9.7	↓
	LL01ED-CV25L06	-	-	-
	LL01ED-CV45L06	22°	4.0	↓
 <b>NICHIA</b> 183A	LL01ED-CV15L06	-	-	-
	LL01ED-CV25L06	21°	3.6	↓
	LL01ED-CV45L06	29°	2.1	↓
 <b>EDISON</b> 1LA5	LL01ED-CV15L06-M2	16°	5.3	↓
	LL01ED-CV25L06-M2	26°	2.8	↓
	LL01ED-CV45L06-M2	29°	2.0	↓
 <b>CREE</b> XPE	LL01CR-QG15L06-M2	13°	8.7	↓
	LL01CR-QG25L06-M2	15°	9.4	↓
	LL01CR-QG45L06-M2	-	-	-
 <b>CREE</b> XP-G3	LL01CR-QG15L06-M2	14°	7.2	↓
	LL01CR-QG25L06-M2	19°	5.2	↓
	LL01CR-QG45L06-M2	27°	2.6	↓
 <b>CREE</b> XP-L2	LL01CR-QG15L06-M2	18°	5.0	↓
	LL01CR-QG25L06-M2	21°	4.4	↓
	LL01CR-QG45L06-M2	27°	2.7	↓
 <b>CREE</b> XT-E E0	LL01CR-QG15L06-M2	-	-	-
	LL01CR-QG25L06-M2	18°	5.7	↓
	LL01CR-QG45L06-M2	26°	3.0	↓

## Product Nomenclature



### Ledlink Optics, Inc

Taiwan HQ

15F, No.655, Bannan Rd., Chung-Ho Dist.,  
New Taipei City, Taiwan 235

### Ledlink Optics (Dongguan) Co., Ltd

Dongguan Factory

No.5, TianKeng Industrial Dist., HengLiTown, DongGuan City,  
GuangDong Province, China 523478

### Ledlink Optics (Yangzhou) Co., Ltd

Yangzhou Factory

No.180, LinJiang Rd., YangZhou City, Jiangsu Province, China 225009

[www.ledlink-optics.com](http://www.ledlink-optics.com)

[service@ledlink-optics.com](mailto:service@ledlink-optics.com)

