

STRADA-2X2-DNW

Soft wide beam with good illuminance uniformity

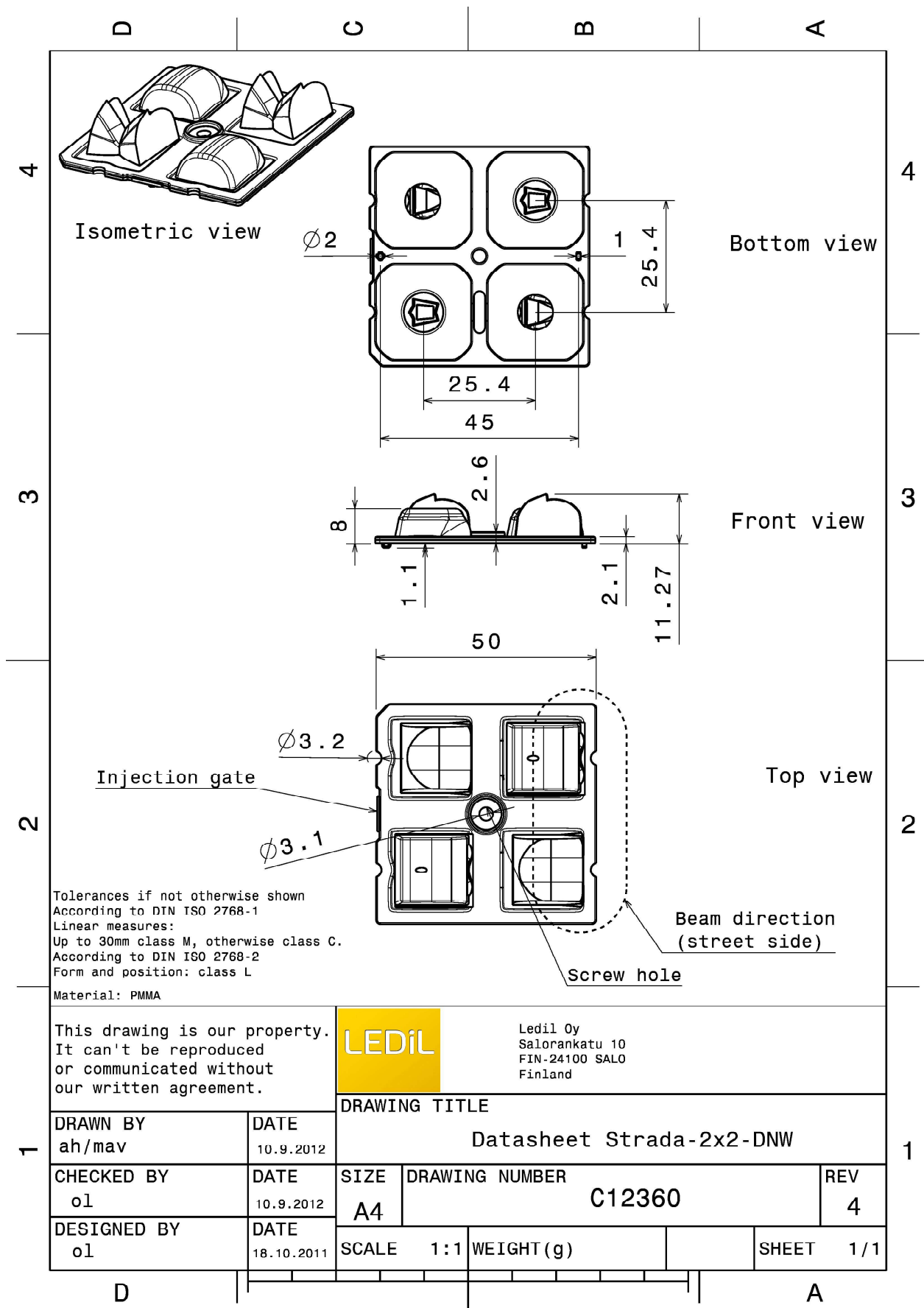
TECHNICAL SPECIFICATIONS:

Dimensions	50.0 mm
Height	11.3 mm
Fastening	glue, pin, screw
Colour	clear
Box size	480 x 280 x 300 mm
Box weight	8.2 kg
Quantity in Box	800 pcs
ROHS compliant	yes ⓘ



MATERIAL SPECIFICATIONS:

Component	Type	Material	Colour
STRADA-2X2-DNW	Multi-lens	PMMA	clear



This drawing is our property. It can't be reproduced or communicated without our written agreement.



Ledil Oy
Salorankatu 10
FIN-24100 SALO
Finland

DRAWN BY ah/mav		DATE 10.9.2012	DRAWING TITLE Datasheet Strada-2x2-DNW		
CHECKED BY ol	DATE 10.9.2012	SIZE A4	DRAWING NUMBER C12360		REV 4
DESIGNED BY ol	DATE 18.10.2011	SCALE 1:1	WEIGHT (g)	SHEET 1/1	