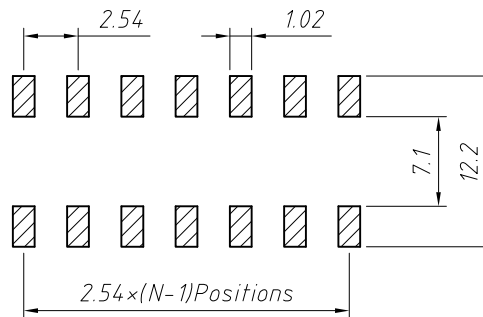
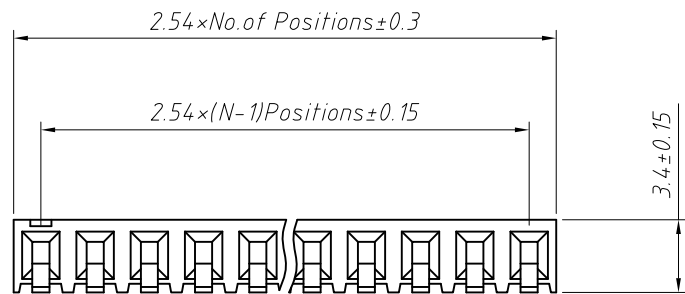
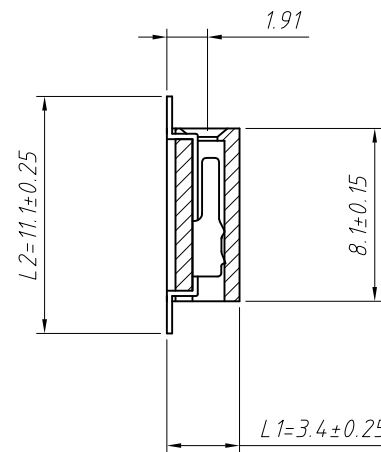
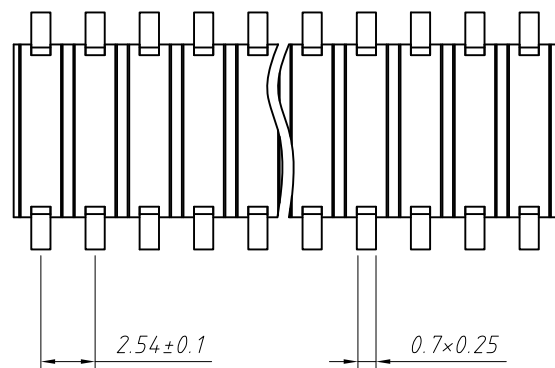


RoHS Compliance



Recommended P.C.B Layout (Top Side)  
(PCB BOARD TOLERANCE  $\pm 0.05$ )



T=Without Post

**Material:**  
 Standard: PA6T  
 Contact: Brass  
 Contact plating: Au or Sn Over Ni  
 Nickel Insulator: Polyester, UL94V-0

**Electrical Characteristics:**  
 Rated Current: 3.0AMP  
 Contact Resistance: 20m $\Omega$  Max  
 Withstand Voltage: 1000V AC/DC  
 Insulator Resistance: 1000M $\Omega$  Min

**Mechanical**  
 Operating Temperature:  $-40^{\circ}\text{C} \sim +105^{\circ}\text{C}$   
 Max. Processing Temp:  $230^{\circ}\text{C}$  for 30-60 seconds ( $260^{\circ}\text{C}$  for 10 seconds)

Dimension antitheses list (mm)

ITEM	L1	L2	Plastic Height
Standard	3.40	11.10	3.40
Nonstandard	---	---	---

ANGLE TOLERANCE	PROJECTION	Description:
$\pm 3^{\circ}$		2.54x8.1x3.4mm Female Header Horizontal SMT, 1xN Pin
GENERAL TOLERANCE	UNITS	mm
x.x $\pm 0.30$	SHEET SIZE	A4
x.xx $\pm 0.20$	Draw:	Daniel 2018-07-10
x.xxx $\pm 0.10$	Check:	Daniel 2018-07-10

**CONNTERM**