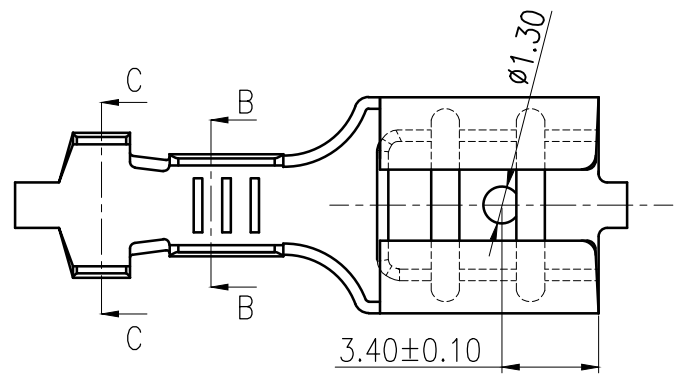


6	7	8
工程变更单号 ECN NO	性质 DESCRIPTION	版次 REV
		A04
发行时间 DATE	确认 ACCEPT	审核 CHECK
批准 APPROVAL		

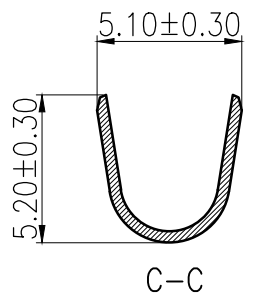
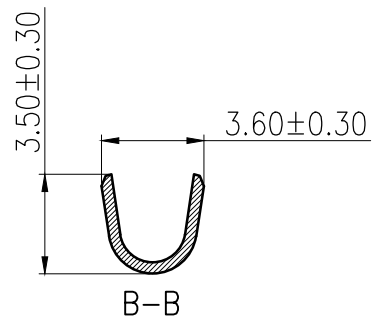
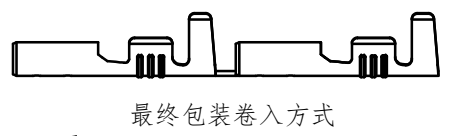
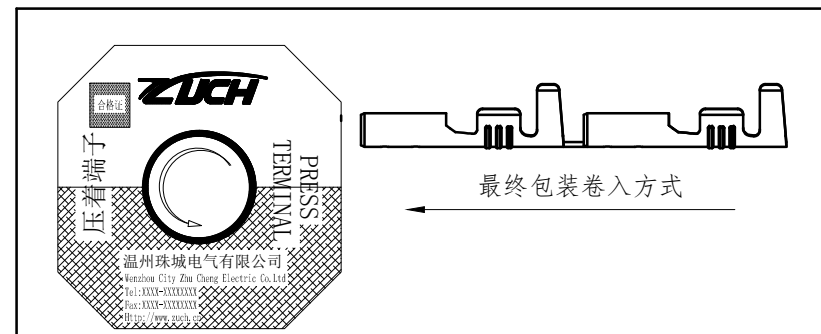
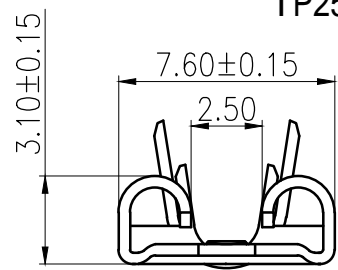
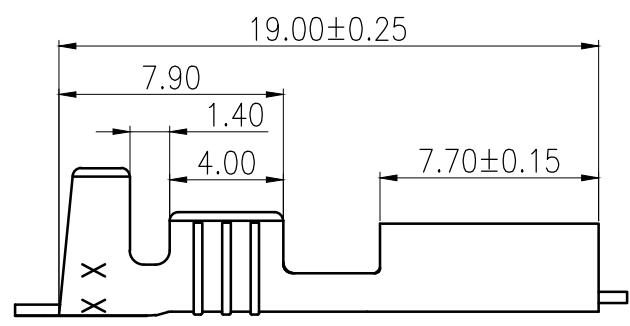


Technical requirement

1. Material: Brass(H65) T=0.40 ± 0.02mm
2. Appearance Requirements:NO Crushing , dirty , line remark.
3. Applicable male terminal material thickness: 0.5* ± 0.02mm
4. Wire range: AWG20#-16#
5. Applicable male terminal material thickness: 0.8mm
6. Packing Qty: 6000pcs/reel.
7. Surface: TP25012K-0 Brass

TP25012K-2 Fog tin-plated

TP25012K-3 Bright Tin-Plated



未注尺寸公差按下表

尺寸 DIM	公差 TOL	尺寸 DIM	公差 TOL
.X	±0.20	.X	±2°
.X	±0.15	.X	±1°
.XX	±0.10		
.XXX	±0.05		

ZUCH 浙江珠城科技股份有限公司
Zhejiang ZUCH Technology Co., Ltd

文件编号 FILE NO	ZC-T-452	日期 DATE	产品名称 TITLE	250直插B形	
设计 DESIGN			成品料号 PART NO	TP25012K-*	
审核 CHECK			版次 REV	A04	
批准 APPROVAL			比例 SCALE	1:1	单位 UNIT
				mm	mm



客户图