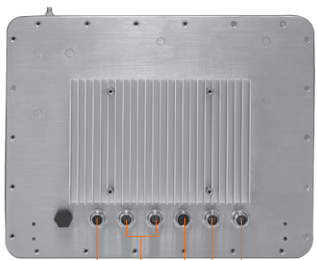
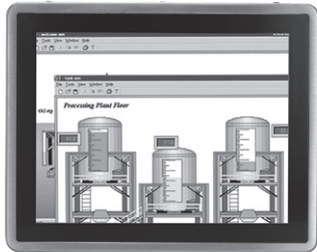


GOT812L(H)-880

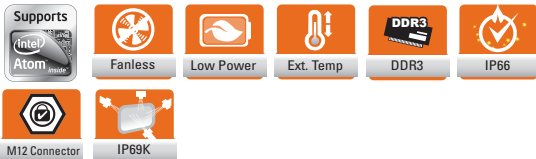
12.1" XGA TFT IP66-rated Stainless Steel Fanless PCT (or Resistive Touch) Panel Computer with Intel® Core™ i5 Processor, Flat Bezel Design (-20°C to +50°C)

NEW



4 5 6 7 8

- 4. DC power connector
- 5. USB 2.0 x 4
- 6. Ethernet
- 7. COM 1 (RS-232/RS-422/RS-485; Default: RS-232)
- 8. COM 2 (RS-232)



Introduction

The GOT812 is specially designed for food processing applications. Its IP66-rated stainless steel housing protects entire system from damage of water, powder and dust. It also supports a wide operating temperature range of -20°C to +50°C. Thus, this robust unit is best suited for extreme humidity, dusty or wet spaces in food factories or kitchens and more harsh applications.

Sunlight readable design

The GOT812H-880 features sunlight readable technology with LED tech high brightness 800 nits color display and low reflective touchscreen allows the screen legible even under strong sunlight.

Full IP66 and IP69K compliance

The GOT812 adopts a water/dust-proof housing design with five IP66-rated connectors, M12 I/O connectors and IP69K compliance that ensures the product's ability to resist ingress of high temperature and high pressure water. It passed entire system IP66 test by SGS, and verified salt mist test. Additionally, it was tested by a spray nozzle with high temperature water (80°C), a flow rate of 14–16 L/min and a nozzle hold with distance 10–15 cm away from the device at angles of 0°, 30°, 60° and 90° for 30 seconds. The GOT812 is qualified to meet harsh environment applications.

Wide temp. (-20°C to +50°C) & anti-vibration (2 G) design

The GOT812 featuring fanless and noiseless design supports a wide operating temperature range from -20°C to +50°C. Besides, the patent of anti-vibration for SSD ensures system reliability and stability.

Features

- 12.1" XGA TFT flat bezel LCD display
- Sunlight readable solution with 800 nits
- IP66/IP69K-rated (NEMA4X) water/dust/corrosion-proof design
- Full stainless steel enclosure with type 316
- Wide operating temperature range of -20°C to +50°C
- Fanless design with Intel® Core™ i5 processor
- Wireless network connectivity
- Wide range 9-36 VDC power input
- Supports suspension and VESA mount
- M12 type connectors for harsh environments



▲ Side view

- 1. Backlight ON/OFF
- 2. Brightness Adjust +
- 3. Brightness Adjust -

Specifications

Enclosure	Stainless type 316	
LCD Panel	Display Type	12.1" XGA TFT LCD
	Brightness (cd/m ²)	800 nits LCD (GOT812H-880) 420 nits LCD (GOT812L-880)
	Resolution	1024 x 768
	Viewing Angle (H/V)	160°/160°
Main System	CPU	Intel® Core™ i5 4300U 1.9 GHz (Haswell ULT)
	Chipset	SoC Integrated
	System Memory	1 x 204-pin DDR3L-1600 SO-DIMM max. up to 8 GB
	BIOS	AMI with Axiomtek standard features; such as, SmartView, Ethernet Boot ROM (RPL & PXE), customer CMOS backup
	Storage	1 x 2.5" SSD
	Watchdog Timer	255 levels, 1–255 sec.
	Onboard Graphics	Integrated in Intel® GFX



Specifications

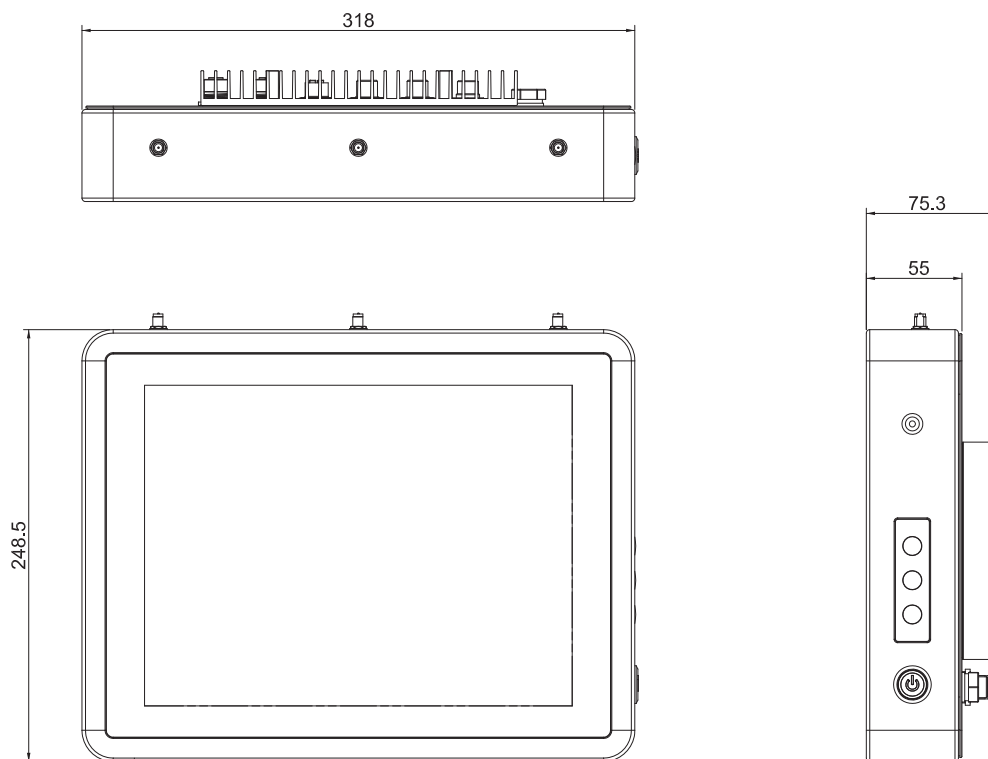
I/O Connector	2 x RS-232/422/485 (default RS-232, A-Coded) 4 x USB 2.0 (A-Coded) 1 x 10/100/1000 Mbps Ethernet (X-Coded)
Expansion Interface	2 x PCI Express Mini Card slot
Touchscreen	5-wire resistive touch or projected capacitive multi-touch
Power Supply	Power input 9-36VDC
Dimensions	TBD
Packing Dimensions	TBD
Weight (net/gross)	TBD
Environment	Operating temperature: -20°C ~ +50°C (-4°F ~ +122°F) Storage Temperature: -30°C ~ +70°C (-22°F ~ +158°F) Relative humidity: 10% ~ 95% @ 40°C, non-condensing Operation vibration: 2G, 5 ~ 500Hz, random for 2.5" SSD
Certificate	CE

* W.T.: Wide Temperature. All W.T. supported products have to be sorted by Axiomtek.

Optional Accessories

594B8122100E	Water-proof COM port cable (1.8 m)
594B8152710E	Water-proof LAN cable (1.8 m)
50964A23000E	72W/24V power adapter with M12 connector

Dimensions



Ordering Information

GOT812L-880-C-DC	12.1" XGA fanless IP66-rated stainless steel touch panel computer with Intel® Core™ i5 4300U, projected capacitive touch screen, 9-36VDC power input, 420 nits LCD and Wi-Fi or 3G
GOT812L-880-C-RF-DC	12.1" XGA fanless IP66-rated stainless steel touch panel computer with Intel® Core™ i5 4300U, projected capacitive touch screen, 9-36VDC power input, 420 nits LCD and Wi-Fi or 3G
GOT812H-880-R-DC	12.1" XGA fanless IP66-rated stainless steel touch panel computer with Intel® Core™ i5 4300U, 5-wire flat resistive touch screen, 9-36VDC power input, 800 nits LCD and Wi-Fi or 3G
GOT812H-880-R-RF-DC	12.1" XGA fanless IP66-rated stainless steel touch panel computer with Intel® Core™ i5 4300U, 5-wire flat resistive touch screen, 9-36VDC power input, 800 nits LCD and Wi-Fi or 3G

* Specification and certifications are based on requirements and may vary.

Optional EOS Installation

WES 7
WE8S

Optional OS Installation

Windows® 7
Windows® 8/8.1

Overview

Fanless Touch Panel Computers

2
Heavy-duty Fanless Touch Panel Computers

Industrial Touch Panel Computers

Industrial Touch panel Monitors

Infotainment Touch Panel Computers

Healthcare & Medical Solutions

Open Frame Panel Computers

Accessories

