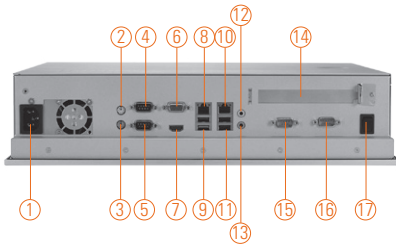
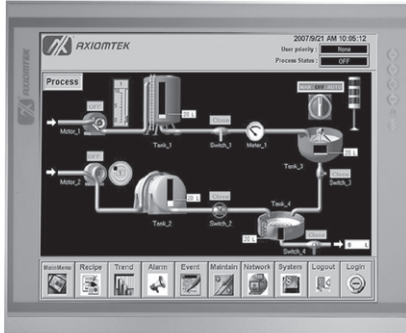


# P1177E-842

17" SXGA TFT Expandable Industrial Touch Panel Computer with Intel® Celeron® Processor J1900 and 1 PCI Slot

NEW



- |                           |                                    |                                 |
|---------------------------|------------------------------------|---------------------------------|
| 1. AC Plug x 1            | 7. HDMI x 1                        | 13. Mic-in x 1                  |
| 2. PS/2 Mouse             | 8. RJ-45 for Gigabit Ethernet x 1  | 14. PCI Card expansion slot x 1 |
| 3. PS/2 Keyboard          | 9. USB 3.0 x 1, USB 2.0 x 1        | 15. COM 3 (RS-232)              |
| 4. COM 1 (RS-232/422/485) | 10. RJ-45 for Gigabit Ethernet x 1 | 16. COM 4 (RS-232)              |
| 5. COM 2 (RS-232/422/485) | 11. USB 2.0 x 2                    | 17. Switch for power On/Off x 1 |
| 6. VGA x 1                | 12. Line-out x 1                   |                                 |



## Introduction

The P1177E-842 is equipped with a 17-inch SXGA TFT LCD display and IP65 compliant front bezel. This rugged panel PC is powered by quad-core Intel® Celeron® processor J1900 for a great balance between performance and power consumption. The entire system is protected by a robust, slim aluminum casing with IP65/NEMA 4 compliant front bezel, which makes it suitable to operate in extreme and space-constricting environments. There are only three screws on the back chassis, which users can quickly remove it and install storage, memory and expansion cards with ease. It comes with both PCI and PCI Express Mini Card slots, and is also capable of dual-display through VGA and HDMI outputs. The P1177E-842 is a highly integrated system for factory automation, kiosks, industrial automation, and IoT & M2M applications.

### Dual Monitor Display

If larger viewing area is desired, an additional display can be connected via the system's VGA or HDMI port to help enhance worker's productivity level.

### Speaker and WLAN Antenna Supported

The scalable P1177E-842 features built-in speakers which can be used for multimedia content displays on kiosk applications. It also supports Wi-Fi 802.11 module and antenna for wireless network connectivity up to 200Mbps data rate. By plugging in the WLAN module, users can have instant access to wireless LAN/GPRS/GSM/3G.

### Expansion capability

The 17-inch industrial touch panel PC, P1177E-842, offers one PCI slot or one PCI Express Mini Card slot for expansion purpose. User can easily plug in standard half-size PCI card for any requirement.

## Features

- 17" SXGA TFT LCD display
- Intel® Celeron® quad-core processor J1900 2.0 GHz (Bay Trail)
- One PCI expansion slot and one PCI Express Mini Card with SIM slot
- 1 USB 3.0, 3 USB 2.0 and 4 COM ports
- Built-in speakers and optional Wi-Fi 802.11 b/g/n module
- Robust aluminum with IP65 compliant front bezel design



▲ Easy Maintenance & Hardware Installation

## Specifications

Front Bezel	Aluminum with IP65/NEMA 4 rugged protection		
LCD Panel	Display Type	17" SXGA TFT LCD	
	Brightness	250 nits	
	Resolution	1280 x 1024 pixels	
	Viewing Angle	170°/160°	
Main System	CPU	Intel® Celeron® processor J1900 2.0 GHz (Bay Trail)	
	System Memory	1 x 204-pin DDR3L-1333 SO-DIMM max. up to 8 GB	
	BIOS	AMI UEFI BIOS with OA 3.0 built	
	Storage	1 x 3.5" or 2.5" SATA HDD	
		1 x mSATA	
	Watchdog Timer	255 levels, 1-255 sec.	



## Specifications

IO Connector	2 x RS-232/422/485 1 x RS-232 1 x RS-232 with 5V & 12V 2 x 10/100/1000 Mbps Ethernet 1 x VGA 1 x HDMI 1 x PS2 Keyboard & mouse 1 x USB 3.0 3 x USB 2.0 1 x Audio (Mic-in/Line-out)
Expansion Interface	1 x PCI Slot 1 x PCI Express Mini Card with SIM Slot
Touchscreen	5-wire resistive type Light transmission 79% 1 million activations (typical) at a single point
Power Supply	100-240 VAC, 200W
Dimensions	410 mm (16.14") (W) x 92 mm (3.62") (D) x 338 mm (13.30") (H)
Packing Dimension	605 mm (23.82") (W) x 240 mm (9.45") (D) x 570 mm (22.44") (H)
Weight(net/gross)	6.3 kg (13.89 lb) / 10.1 kg (22.27 lb)
Environment	Operating temperature: 0°C ~ +45°C (+32°F ~ +113°F) Storage temperature: -20°C ~ +65°C (-4°F ~ +149°F) Relative humidity: 10% ~ 90%@40°C, non-considering Operating vibration: 1.0G, 5-500Hz, random
Certificate	CE

## Ordering Information

P1177E-842	17" SXGA expandable industrial touch panel computer with Intel® Celeron® J1900 2.0 GHz (up to 2.42 GHz) quad cores processor, resistive touch screen, 1 PCI slot and 100-240VAC
------------	---

\* Specification and certifications are based on requirements and may vary.

## Optional Accessories

82211770060E	VESA & wall mount kit
82211770070E	Rack mount kit
E202003330	VM-101 (VESA ARM clamp type)
E202003329	VM-105 (VESA ARM wall-mount)
82231570160E	Wireless LAN kit

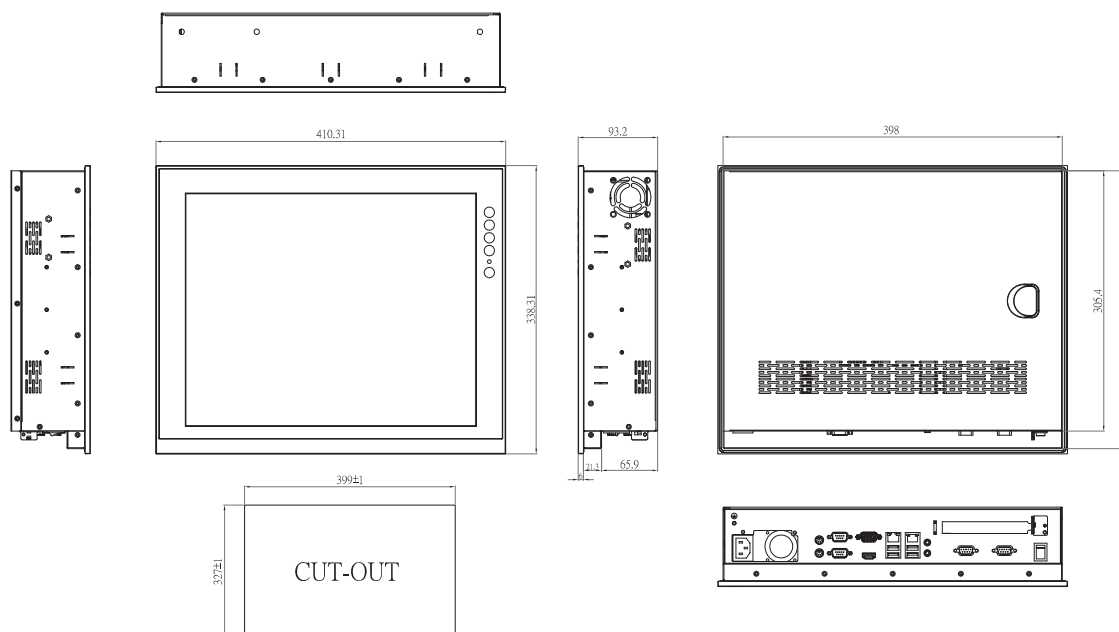
## Optional OS Installation

Windows® 7/8.1
Windows® Embedded 7/8



▲ Less screw design

## Dimensions



Overview

Fanless Touch Panel Computers

Heavy-duty Fanless Touch Panel Computers

3

Industrial Touch Panel Computers

Industrial Touch panel Monitors

Infotainment Touch Panel Computers

Healthcare & Medical Solutions

Open Frame Panel Computers

Accessories

