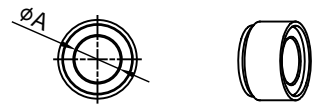
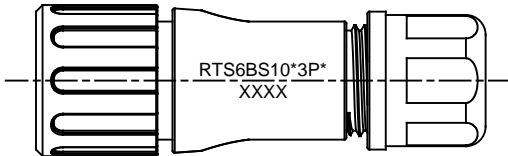
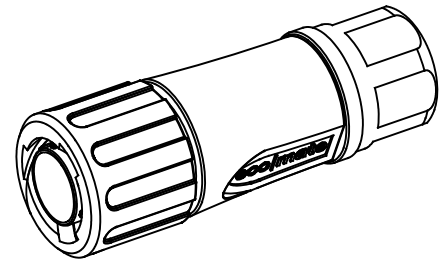
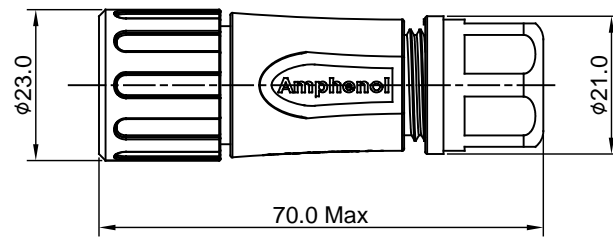
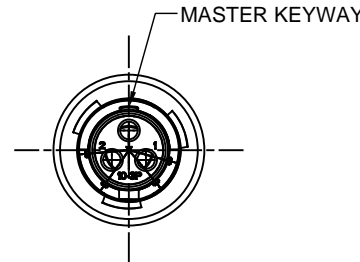


REVISIONS					
REV	ECO	DESCRIPTION	DATE	BY	APPR
A1	--	RELEASED DRAWING	Aug-10-2016	Ben	Tommy



- NOTES : (UNLESS OTHERWISE SPECIFIED)
- MATERIAL :
    - SHELL : THERMOPLASTIC , UL94 V-0.
    - INSERT : THERMOPLASTIC , UL94 V-0.
    - COUPLING NUT : THERMOPLASTIC , UL94 V-0.
    - O-RING : NBR/SILICONE RUBBER.
    - WAVE WASHER : STAINLESS STEEL.
    - BACK SHELL : THERMOPLASTIC , UL94 V-0.
    - CLAMP NUT : THERMOPLASTIC , UL94 V-0.
    - PLASTIC RING : THERMOPLASTIC , UL94 V-0.
    - RUBBER RING : NBR/SILICONE RUBBER..
  - SPECIFICATIONS :
    - 2.1 RATED CURRENT : 13A (MAX).
    - 2.2 RATED VOLTAGE : 500V(AC/DC).
    - 2.3 OPERATING TEMPERATURE : SEE CHART .
    - 2.4 DIELECTRIC WITHSTANDING VOLTAGE : LESS THAN 2 MILLIAMPS CURRENT LEAKAGE@2000 VOLTS AC.
    - 2.5 INSULATION RESISTANCE : 5000 MEGOHMS MIN.
    - 2.6 IP--CLASS : IP67.
    - 2.7 MATING CYCLES DURABILITY : 500 CYCLES MIN.
    - 2.8 RoHS COMPLIANT.
  - SUITABLE CONTACTS : 16# CONTACTS.
  - ALL DIMENSIONS ARE FOR REFERENCE USE ONLY.

DIMENSION $\phi A$	CABLE OD RARGE
7.0MM	4.0-6.5MM
8.8MM	5.0-8.8MM

KEY	PART NUMBER	
		-40°C ~ +105°C
N	RTS6BS10N3P	RTS6BS10N3P03

QUANTITY	PART NUMBER	DESCRIPTION	ITEM
<b>MATERIALS LIST</b>			
UNLESS OTHERWISE SPECIFIED		SIGNATURES	
1) All dimensions are in metric(mm).		DATE	
2) Tolerances are as follows:		DRAWN: Ben Aug-10-2016	
1 PL DEC $\pm 0.30$ Fractions $\pm 1/64$		CHECKED: Tod Aug-10-2016	
2 PL DEC $\pm 0.15$ Angles $\pm 1'$		ENGINEER:	
3 PL DEC $\pm 0.08$		APPROVAL: Tommy Aug-10-2016	
3) Note reference = $\triangle$		CUSTOMER:	
MATERIAL SPECIFICATIONS:		THIS DRAWING IS SUPPLIED FOR INFORMATION ONLY. DESIGN FEATURES, SPECIFICATIONS AND PERFORMANCE DATA SHOWN HEREON ARE THE PROPERTY OF THE AMPHENOL CORPORATION. NO RIGHTS OF REPRODUCTION ARE IMPLIED. ALL DIMENSIONS ARE SUBJECT TO NORMAL MANUFACTURING VARIATIONS.	
PROCESS SPECIFICATIONS:		SIZE	TYPE
NEXT ASSY:		B	C-
		DWG NO. RTS6BS10*3P*	
		REVISION A1	
		SCALE	NONE
		SHEET 1 OF 1	

TITLE: ECO-MATE PLUG BACK SHELL SIZE 10,3POS,PIN DWG NO: RTS6BS10\*3P\* REV: A1 SH: 1 OF: 1